

SOLD

4 BED SOLID TIMBER HOME ON LARGE 3,885 SQM BLOCK WITH A CREEK.

Welcome to this 4-bedroom house in Crows Nest, QLD!

From the home, it is a short walk only a block away from the town CBD.

This home was moved to the block only 3 years ago, wiring, plumbing, and new steel stumps are all compliant with council removal standards.

It has a functional kitchen and spacious dining area plus a large comfortable lounge room with VJ walls and solid timber beams as an added feature on the ceiling.

The home is on a generous 3,885 sqm block (nearly one acre) with plentiful outdoor space with Bald Hills Creek on part of the boundary. The block has never flooded as there is a steep 20-meter decline of steps leading from the boundary down to the scenic creek. This block has subdivision potential.

The house has been designed with four bedrooms, one bathroom, and a single carport, giving you plenty of room to spread out and relax in comfort.

You'll love the fully fenced yard with plenty of room for outdoor activities, and the outdoor entertainment area on the secluded front and back verandas.. The property also comes with one steel shed, giving you plenty of storage space.

The interior of the home features timber floorboards in the bedrooms.

There are also a number of other features, such as broadband internet access and pay-TV access.

This property is also eco-friendly, with a water tank, and the home is connected to town water and power.

The location of this house is ideal, close to all the amenities of Crows Nest. You are conveniently located near local shops, and transport links, making it easy to get around. This is the perfect property for those who want to enjoy the peace and quiet of a rural lifestyle with all the convenience of living close to town.

This house is ready and waiting for you to call it home. Don't wait, enquire today!

4 BED | 1 BATH | 1 CAR

PRICE:
\$458,000

OPEN FOR INSPECTION:
N/A

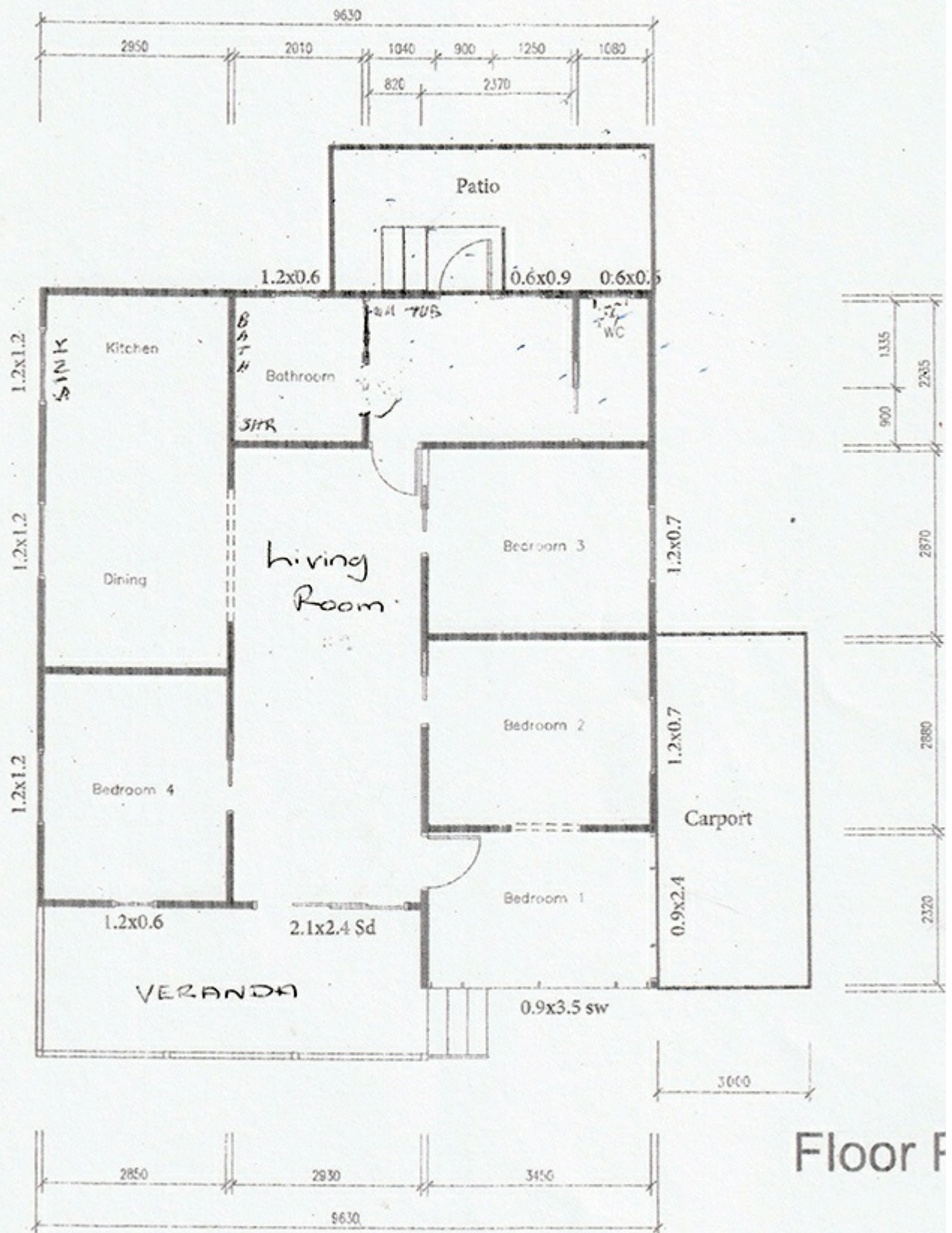


Yvonne Bradley

0408181146

yvonne@atrealty.com.au

www.atrealty.com.au



Disclaimer: Please note this floor plan is for marketing purposes and is to be used as a guide only. All dimensions are estimates only and may not be exact measurements.