



SOLD

FABULOUS DUAL LIVING WITH TWO STREET ACCESS

Unlock the door to this well-designed family home that paints life in hues of brightness and warmth, just moments away from the breathtaking Tugun Beach. This stunning property boasts an impressive list of features, including four bedrooms, two bathrooms, and a three-car garage, making it an ideal choice for families seeking space, comfort, and lifestyle.

Positioned on a corner block in a leafy street, this home sits on 511 sqm of land, offering two-street access for added convenience and flexibility. With Tugun beach just a short 700-metre stroll away, you'll have the sun, sand, surf, and crystal water of the popular Southern Gold Coast beach plus the convenience of nearby amenities.

This property underwent meticulous and thorough renovations and was completed in 2022.

Upstairs, the open-plan lounge room and dining area creates a seamless flow, complemented by cross breezes that fill the space with natural light and fresh air. Three good-sized bedrooms, including the master with a walk-in robe, while the main bathroom and separate toilet add to the functionality of this level.

With elegant timber floors, fans throughout and plantation shutters, you are sure to enjoy a light and airy ambiance throughout the day. Upstairs, you'll also find the kitchen where you can unleash your inner chef with a gas oven, cooktop, electric grill, dishwasher, plumbed fridge and a large breakfast bar. Entertaining will be a delight in the alfresco area featuring a Stratco remote-controlled sunroof, allowing you to enjoy the outdoors all year round.

Downstairs, a surprise awaits with the option for dual living. A good-sized bedroom with an ensuite is ready to host guests or extended family members. The original tandem garage/laundry can be easily converted into a multi-purpose room, while the double garage with wide workbenches can accommodate your DIY projects or even a home business, with dual street access to make this possible.

In addition to these incredible features, the property comes with 15-amp power, remote-controlled garage doors and a 1,000-litre water tank to maintain the pristine gardens. There's room for a caravan and a boat, ensuring you can indulge in your passion for adventure and

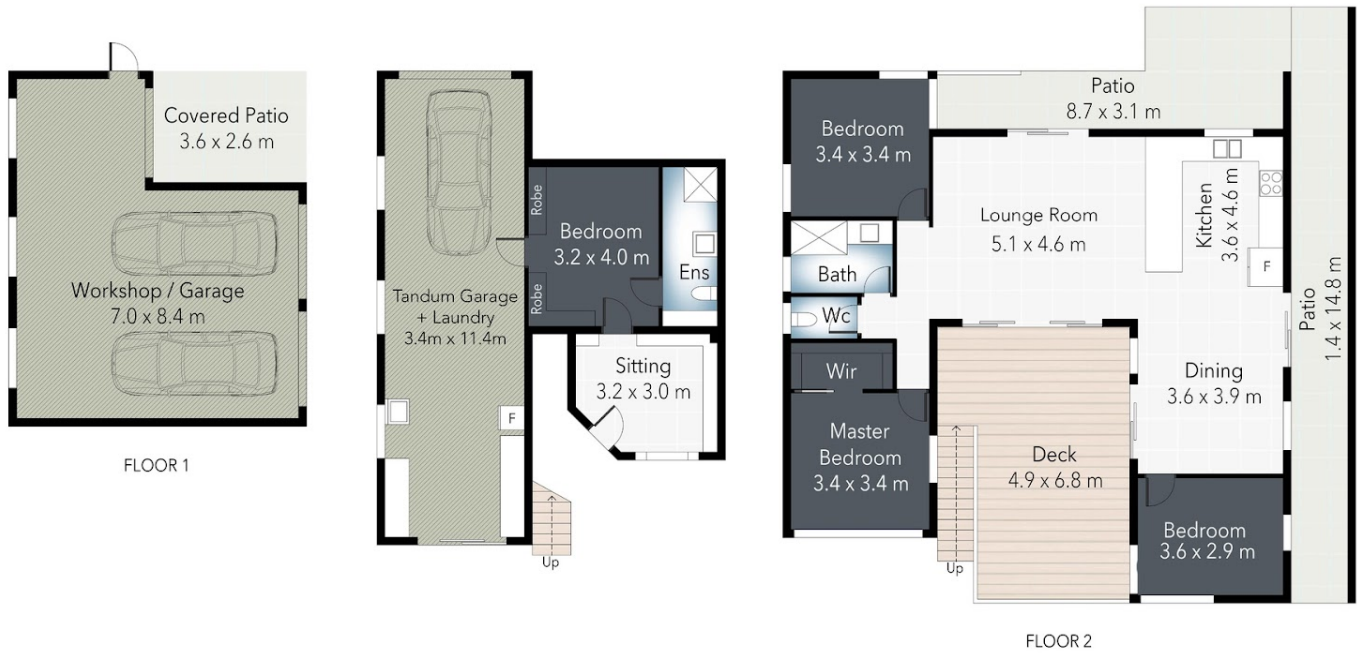
4 BED | 2 BATH | 3 CAR

PRICE:
\$1,420,000

OPEN FOR INSPECTION:
N/A



Michelle Topper
0400362639
michelle.topper@atrealty.com.au
www.atrealty.com.au



FLOOR AREA SIZES
Internal 220 m²
External 69 m²
Total 289 m²

PROPERTY DETAILS
- 4 Bed
- 2 Bath
- 3 Car

Floor Plan Measurements are a guide only. All Measurements are approximate in their distance and volume.

Disclaimer: Please note this floor plan is for marketing purposes and is to be used as a guide only. All dimensions are estimates only and may not be exact measurements.