

SOLD

IMPRESSIVE "BETTER THAN NEW" HOME: 3 BEDS, 2 BATHS, 1 ENSUITE, & 2 GARAGES!

Welcome to 17 Emerald Drive, Rokeby!
Nestled in a near fully developed suburb surrounded by new homes, you will find this magnificent three bedroom, two bathroom, 2 car garage home.

Impeccably constructed in 2021, this 165m² private oasis is built on a generous 585m² allotment, providing plenty of room for the family indoors or out. With secure parking, a fully fenced perimeter, a remote garage and sheds, you will never worry about the safety or security of your home.

Internally, this home has been designed with comfort and convenience in mind. The modern kitchen works well with large dining room adjacent and Lounge down the hall offering separation, cosiness and privacy. The master bedroom comes complete with walk in robe and en-suite, remaining two bedrooms have built-in wardrobes. The kitchen offers dishwasher and built-in appliances for a hassle-free lifestyle. With NBN connected, you will never miss out on the world around you.

The climate-controlled interior of this home ensures maximum comfort year round. With dual reverse cycle aircon, you can enjoy the perfect temperature, no matter the season.

This home is perfect for those looking for a private relaxed lifestyle, close to the amenities of town and only minutes walk or drive to the Glebe Hill Shopping Precinct, 12 minutes to the CBD.

- Landscaped front yard with street appeal
- Impeccable near new home
- double car garage
- very private home
- quality build
- level access
- fully fenced

Take advantage of this opportunity and contact Ben for more information using the links below.

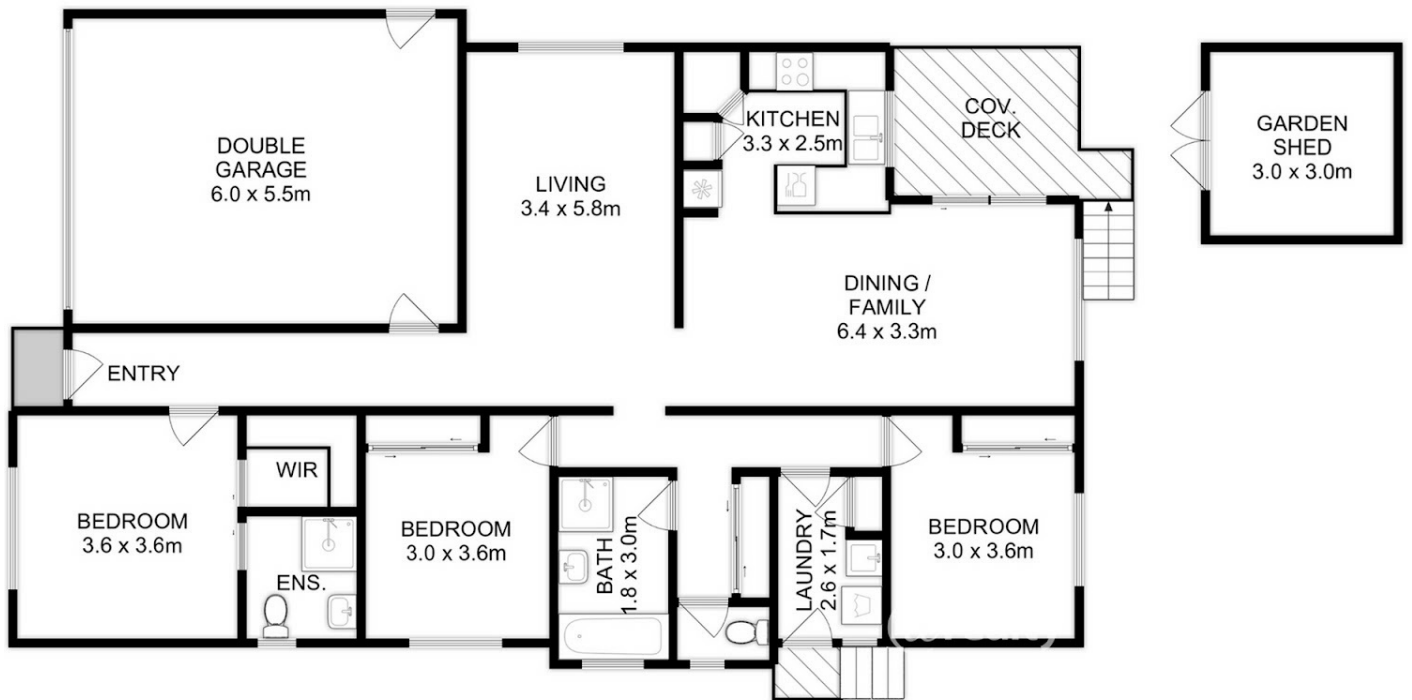
3 BED | 2 BATH | 2 CAR

PRICE:
\$721,000

OPEN FOR INSPECTION:
N/A



Ben Palmer
0417556731
benpalmer@atrealty.com.au
hobarthomes.com.au



Total Approx. Floor Area (inc. Garage) : 165 sqm
Total Approx. Outbuilding Area : 9 sqm

All measurements are internal and approximate.
This plan is a sketch for illustration, not valuation.
Produced by Open2view.com

Disclaimer: Please note this floor plan is for marketing purposes and is to be used as a guide only. All dimensions are estimates only and may not be exact measurements.