



SOLD

SOLD! RENOVATED + HUGE SHED + 1/2 ACRE!

SOLD!

Ladies and gentlemen, we are excited to present to you this outstanding sub-acreage opportunity!

Situated on a large 2,023m² (1/2 acre) block in an excellent Daisy Hill location is this quality home.

Offering a host of features, the renovated single-level home is well-presented and has great appeal.

The living areas are spacious inside and out and the kitchen is absolutely superb! Features include:

- * 3 genuinely L-A-R-G-E built-in bedrooms
- * 2 bathrooms including an ensuite to main
- * Generous lounge, family and dining areas
- * A large, stunning & fully renovated kitchen
- * Black stone benches with waterfall edges
- * Huge central island + a full walk-in pantry
- * SMEG 5-bay dual-fuel cooktop, rangehood
- * Electronic bin + insinkerator + dishwasher
- * Loads of bench space + ample cupboards
- * Stylish timber features, trims, French doors
- * High ceilings for a sense of light and space
- * A large covered outdoor entertainment area
- * 5kw solar power system to keep the bills low
- * HUGE 10m x 10m truck / caravan / boat port
- * Store up to 8 cars or vehicles in the shedport
- * Additional 3-bay shed or garage or workshop
- * 5m wide entrance, fast-moving electric gates
- * Fully fenced/secure block for families & pets
- * Scope to extend house / renovate bathrooms
- * Situated adjacent to tranquil bushland reserve

3 BED | 2 BATH | 7 CAR

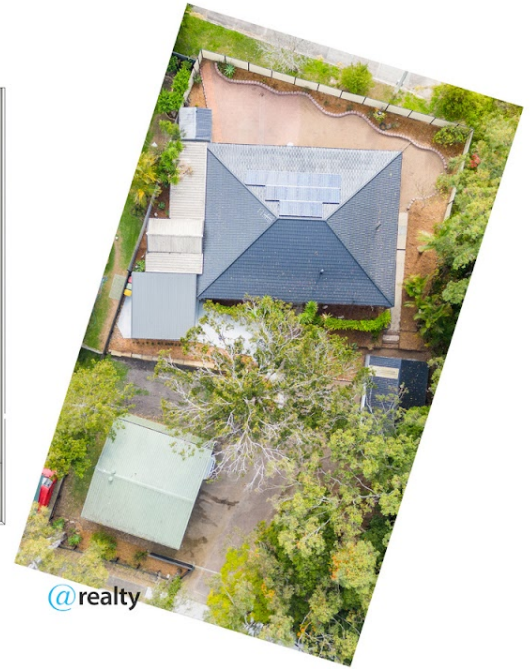
PRICE:
\$1,030,000

OPEN FOR INSPECTION:
N/A



Ben Tafolo
0419260719
tafolo@atrealty.com.au
tafolorealty.com.au

NORTH



50-52 ALLAMANDA DRIVE, DAISY HILL

3 2 4

Internal: 164m² | External: 79m² | Total: 243m²

Whilst every attempt has been made to ensure the accuracy of the floor plan contained here, measurements of doors, windows, rooms and any other item are approximate and no responsibility is taken for any error, omission, or misstatement. This plan is for illustrative purposes only and should only be used as such by any prospective purchaser.



Disclaimer: Please note this floor plan is for marketing purposes and is to be used as a guide only. All dimensions are estimates only and may not be exact measurements.