



Boundaries and dimensions are approximate only.
Interested parties should conduct their own independent enquiries.

SOLD

SOLD BY HELANA KUHL

Displaying a modern and fresh look, this immaculate townhouse is conveniently located only minutes' walk from the beach. The low-maintenance design is complimented by its quiet location within the much loved 'Jabiru Landing'.

Split over two levels, this fabulous home has plenty to offer. The ground floor encompasses an open plan living space including a well-appointed kitchen with stone benchtops and an abundance of storage. The light-filled living area flows seamlessly out to the private undercover courtyard, the perfect place for entertaining or reading your favourite book.

The upper level incorporates two generous bedrooms with built in robes, ceiling fans and a second living area which can be easily converted into a third bedroom.

The stunning resort style pool is the perfect place to entertain the children and relax. There is plenty of visitor parking throughout as well as a secure single lockup garage with internal access.

Minutes away you will find Chirn Parks trendy cafes and specialty shops which provide great coffee, delicious food, and live entertainment.

Features Include:

- Multiple living spaces
- Covered patio for entertaining
- Peaceful leafy outlook
- Private landscaped garden
- Well-appointed kitchen with breakfast bar
- Two good-sized bedrooms (with the option to add a third bedroom)
- Remote garage and plenty of onsite parking
- Well-maintained complex
- Air conditioning
- Resort style pool with cascading waterfall

This immaculate property is located in a quiet street, just a short distance from Broadwater beaches, trendy cafes & restaurants, Australia Fair Shopping Centre, Gold Coast Hospital, Griffith University, local schools and close to public transport.

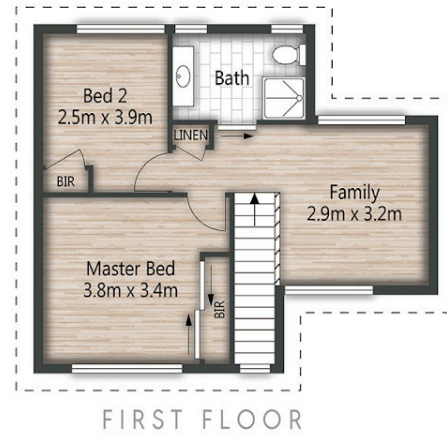
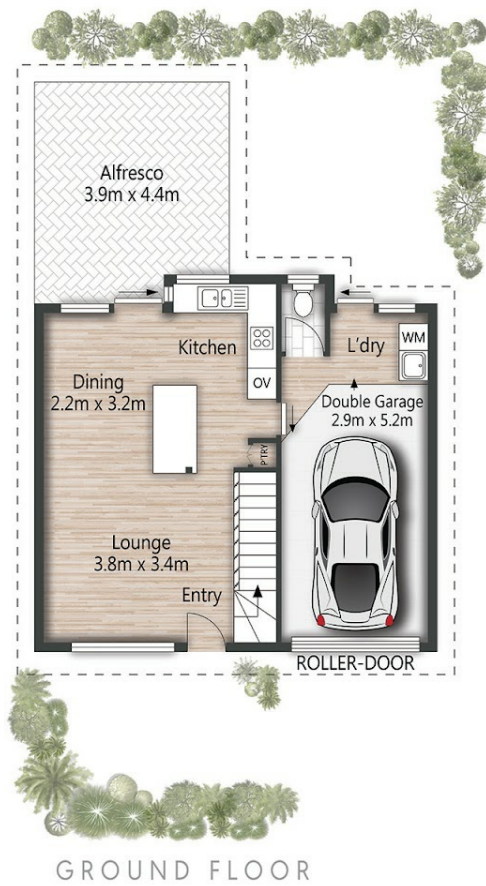
2 BED | 2 BATH | 1 CAR

PRICE:
\$609,000

OPEN FOR INSPECTION:
N/A



Helana Kuhl
0447522643
helana@atrealty.com.au
www.atrealty.com.au



45/75 Brown Street **LABRADOR**

2 | 1 | 1 | 117m² | 197m²

All dimensions are approximate; they are subject to errors and inaccuracies and no liability will be accepted. Plans are shown for marketing purposes only.

Disclaimer: Please note this floor plan is for marketing purposes and is to be used as a guide only. All dimensions are estimates only and may not be exact measurements.