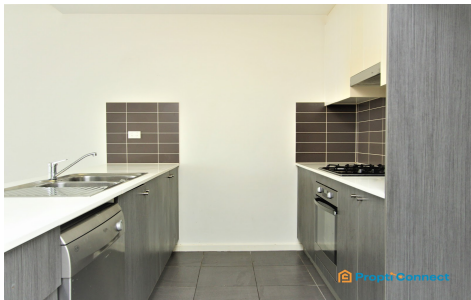


38/6 GEORGE STREET
WARWICK FARM



FOR LEASE

MODERN TWO-BED APARTMENT IN A PRIME LOCATION

2 | 2 | 1

Young couples or professionals need look no further, this modern apartment will tick all the boxes. Convenient living doesn't get any better than this with everything Liverpool has to offer only a short walk or drive from your front door.

At home, you'll enjoy....

- Two spacious bedrooms with built-in robes including the master with an ensuite.
- Stylish kitchen, you can overlook the lounge and dining zone which flows freely out to a good-size covered balcony.
- Kitchen with stainless steel appliances and a gas cooktop.
- An in-unit laundry.
- Split system air-conditioning.
- A single car space with a storage area make this an opportunity too good to miss.

- Walk to Liverpool Hospital, Westfield Liverpool, parks and schools (Approx 500 m)
- Moments from Liverpool and Warwick Farm (Approx 500m) stations and the Hume Hwy

PRICE: \$500 per week

OPEN FOR INSPECTION: N/A .

Rentals Propti Connect | 0280752525 | rentals@propticonnect.com.au | propticonnect.com.au