



SOLD

LUXURY LIFESTYLE LIVING METRES FROM IT ALL

A masterpiece of modern living mere steps from the vibrant heart of Riverwood, this bespoke 2-bedroom, 2-bathroom luxury apartment delivers an artful marriage of contemporary design and effortless convenience, where urban sophistication meets the rich tapestry of a life well-lived.

Carefree open-plan living is accentuated by the expansive sliding doors that allow abundant natural light to flow inside while leading out to a generous balcony, expanding your interior space and offering a perfect spot to soak in the surroundings. The crisp stone kitchen blends form and functionality with its abundant storage options and premium appliances under 40mm stone benchtops, ensuring every meal is prepared with speed and style.

The central bathroom and European laundry ensure absolute convenience besides the two large and robed bedrooms, headlined by the master bedroom with its generous proportions and the added luxury of a private ensuite. An array of modern amenities includes split-system air conditioning, ceiling fans, a secure basement car space and storage cage, secure intercom entry and lift access, and a sprawling shared rooftop terrace - the perfect venue for entertaining guests.

With its highly sought-after location just a brief stroll from Riverwood Plaza shopping, train station, Peakhurst Park, and Georges River walking trails, it offers unparalleled accessibility and convenience to a life beyond all else. Embrace a lifestyle of modern luxury and urban convenience at its finest - call today.

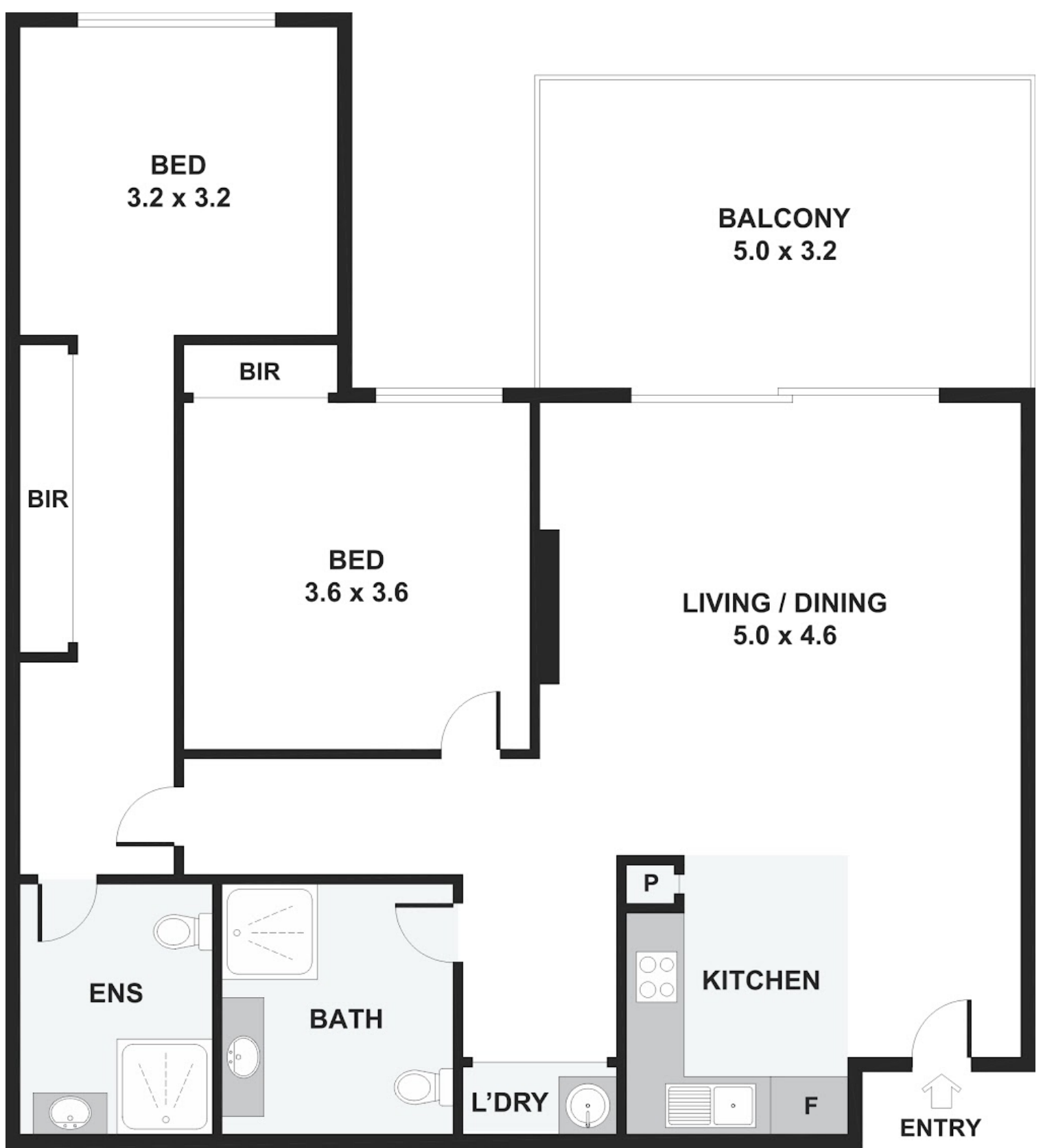
2 BED | 2 BATH | 1 CAR

PRICE:
\$650,000

OPEN FOR INSPECTION:
N/A



Stan Medanic
0439559300
stan@medanic.com.au
Medanic Property Group



Disclaimer: Please note this floor plan is for marketing purposes and is to be used as a guide only. All dimensions are estimates only and may not be exact measurements.



**CAR SPACE
IN SECURE
PARKING**
3.6 x 4.2

**STORAGE
CAGE**
1.2 x 1.0

Stan Medanic
0439559300
stan@medanic.com.au
Medanic Property Group





NOT IN CORRECT POSITION