

5 WENBERN COURT, DENILIQUIN, NSW, 2710



SOLD

STUNNING CENTRE OF TOWN RIVERFRONT

Escape to your own private oasis nestled along the tranquil banks of this Cape Cod's picturesque riverfront. This enchanting property offers the perfect blend of timeless elegance and modern comfort, creating a retreat that you'll never want to leave.

Key Features: Breathtaking Views: Wake up to the breathtaking sunrise vistas that paint the sky in a palette of colors.

Cozy Living Spaces: Thoughtfully designed interiors exude warmth and comfort, with ample natural light and an open layout that seamlessly connects living, dining, and kitchen areas.

Bedrooms: Retreat to a spacious master bedroom with river views from your private balcony, where you can unwind and find solace. Two other bedrooms upstairs & one bedroom downstairs

Outdoor Haven: Immerse yourself in nature's beauty from a large outdoor area, perfect for hosting gatherings, sipping morning coffee, or enjoying evening sunsets.

Private Jetty: Launch a kayak, go fishing, pull the boat up or simply sit back and enjoy the calming ripples of the river from your very own private jetty.

Proximity to Beaches: Embrace the quintessential Cape Cod experience with easy access to River walking tracks, McLeans beach, allowing you to soak in the sun and beach at your leisure.

Location: Prime central location walking distance to CBD, Lawn Tennis Courts, White Lion Hotel, just a cracking position.

Don't miss the opportunity to own this exquisite riverfront home. Contact us today to schedule a private tour and experience the magic of this unparalleled property. Live in the middle of town with absolute river frontage – your dream lifestyle starts here!

Contact Ash on 0429173775

4 BED | 2 BATH | 1 CAR

PRICE:
\$915,000

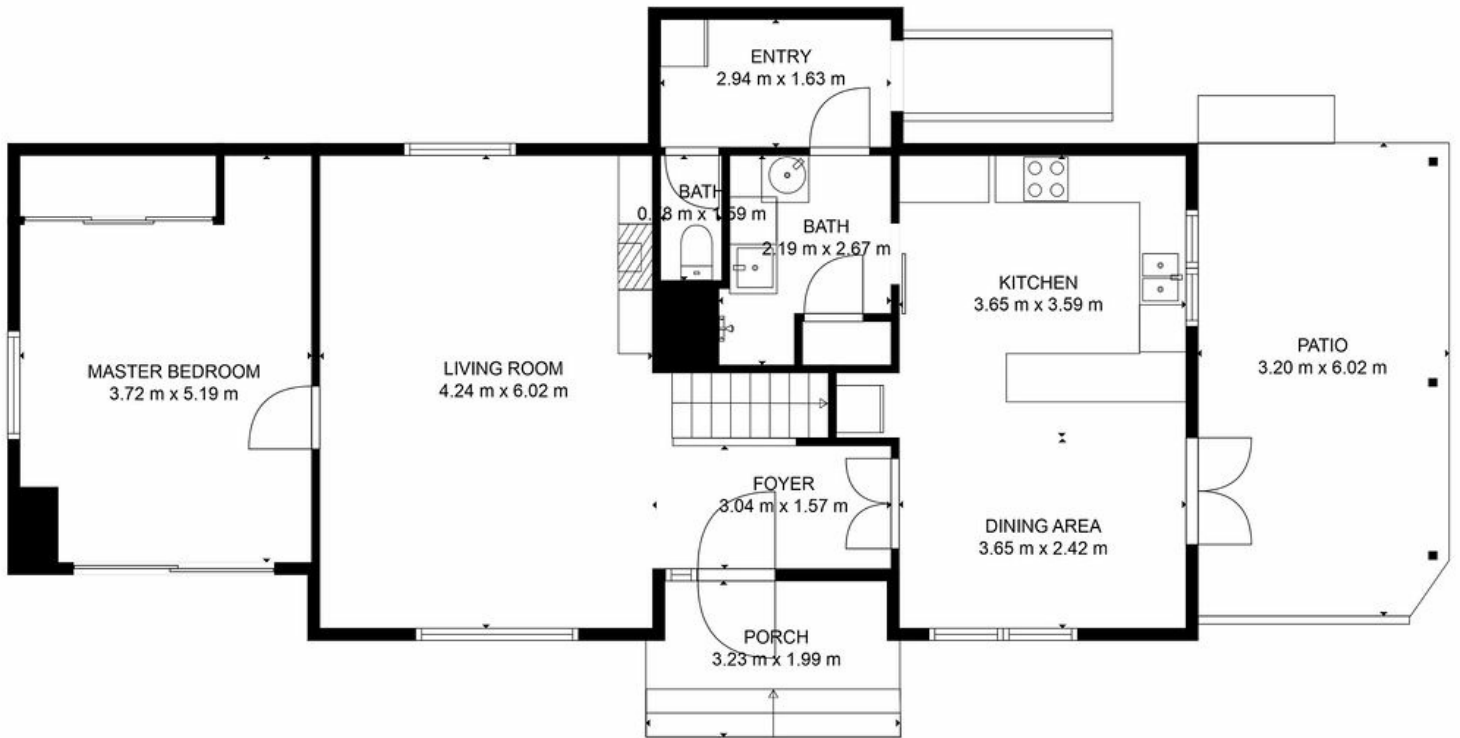
OPEN FOR INSPECTION:
N/A



Ashley Hall
0429173775

ashley@atrealty.com.au
www.ashrealestate.com.au

5 WENBURN COURT



NICOLE CONNELLY PHOTOGRAPHY
0458 122 661

GROSS INTERNAL AREA
FLOOR 1: 88 m², FLOOR 2: 57 m²
EXCLUDED AREAS: PORCH: 6 m², PATIO: 19 m², BALCONY: 15 m²
TOTAL: 145 m²
SIZES AND DIMENSIONS ARE APPROXIMATE, ACTUAL MAY VARY.

Disclaimer: Please note this floor plan is for marketing purposes and is to be used as a guide only. All dimensions are estimates only and may not be exact measurements.