

**SOLD**

## THE ULTIMATE FAMILY HOME!

Nestled in the popular Presidents Park Estate you will come upon this immaculate home with a striking front yard and facade that is sure to impress. This well kept family home is nicely placed on a substantial allotment of 612m2 approx.

- Located close to schools, shops, parks, playgrounds and public transport - everything is at your doorstep.
- An inviting and functional floor plan will appeal to families looking for modern living.
- Two formal living areas and a backyard that leaves nothing to be desired.
- Four generous bedrooms all with robes, the spacious master bedroom is serviced by a walk-in robe and full en suite
- Remaining three bedrooms are serviced by the modern central bathroom and separate toilet.
- Great sized hostess kitchen with ample storage adjoining the meals area that overlooks the huge garden - great for watching kids and pets play safely.
- It is complete with double garage, electric roller shutters, plantation shutters, privacy blinds, ducted heating, evaporative cooling and split system cooling.
- Massive undercover entertaining area all overlooking the spacious back garden perfectly set up for the coming summer evenings with family and friends!
- Lovely landscaped low maintenance garden.

Don't be left wondering what if. This stunner delivers both comfort and security and really needs an inspection to fully appreciate what's on offer.

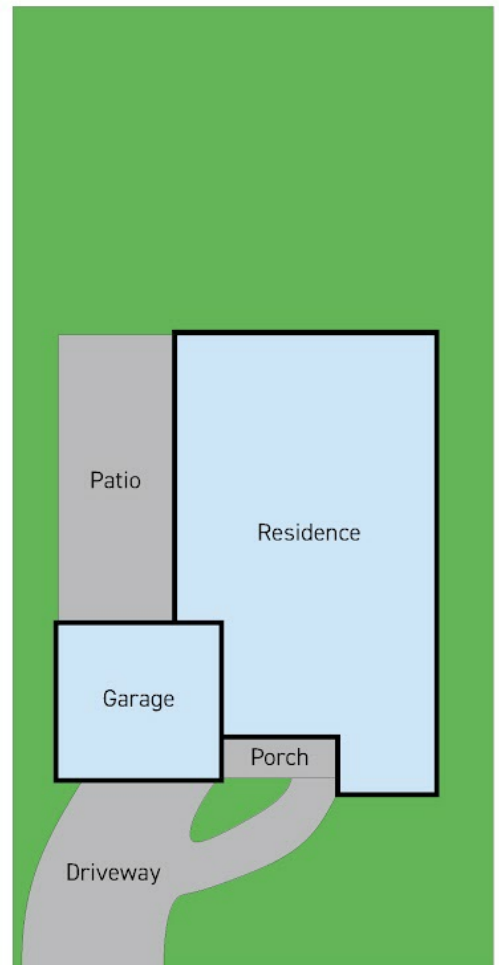
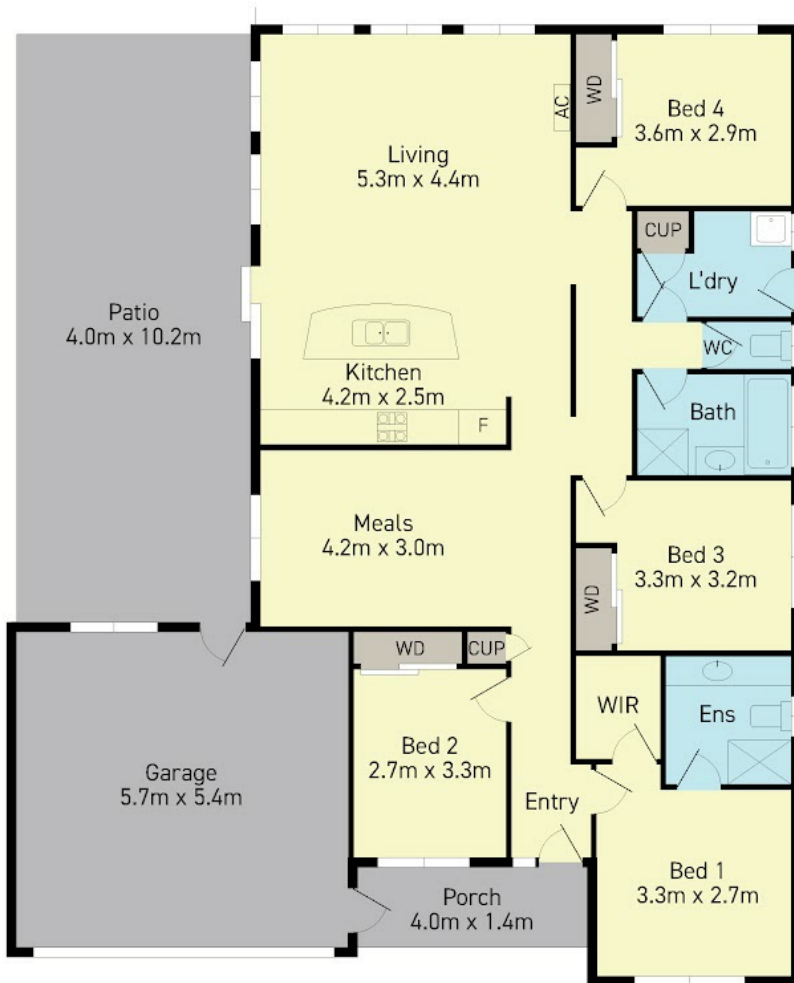
**4 BED | 2 BATH | 2 CAR**

**PRICE:**  
\$665,000

**OPEN FOR INSPECTION:**  
N/A



**Joseph Hanna**  
**0423966320**  
joseph@atrealty.com.au  
[www.atrealty.com.au](http://www.atrealty.com.au)



### 3 Mermaid Crescent Wyndham Vale

Disclaimer: Please note this floor plan is for marketing purposes and is to be used as a guide only. All dimensions are estimates only and may not be exact measurements.