



SOLD

SOARS ABOVE THE AVERAGE

Contact your Local Agent Tricia 0457314206

In the sought-after suburb of Sturt, sits this bright and light three-bedroom, 2 bathroom and 2 living room family home with internal access to the garage with dual roller doors.

Enter the home through the separate entry. The spacious master bedroom is positioned at the front of the home with a walk-in robe and ensuite.

There is a lounge room in the middle of the property with glass sliding doors to an undercover area giving the property a sense of space.

2 other bedrooms are of a good size, both have built in robes with easy access to the main bathroom with a walk-in shower, bath plus a separated vanity and toilet,

The kitchen is well positioned and has a dishwasher, gas cooktop and plenty of cupboard and bench space to suit any cook overlooking the dining and family room with glass sliding doors to another undercover paved pergola area. You can entertain with family or friends or sit peacefully with a Cupa. A bonus garden shed, rainwater tank and raised garden bed making this a low Maintenance opportunity.

This well cared for home has so many extras.

- Ducted heating and cooling
- Solar panels
- Security on windows.
- Gas instantaneous hot water
- Easy care lawn at the front of the home

Ideal for downsizers, first home buyers, investors or a family seeking a café lifestyle in a quiet and peaceful setting. Close to the local Marion shopping Centre public transport and flinders hospital. Public and private schooling options such as Seaview High School, Westminster College, and Darlington Primary School

Disclaimer: All information provided has been obtained from sources we believe to be accurate, however, we cannot guarantee the information is accurate and we accept no liability for any errors or omissions. Interested parties should make their own enquiries and obtain their own independent advice.

RLA 271071 RLA 269823

3 BED | 2 BATH | 1 CAR

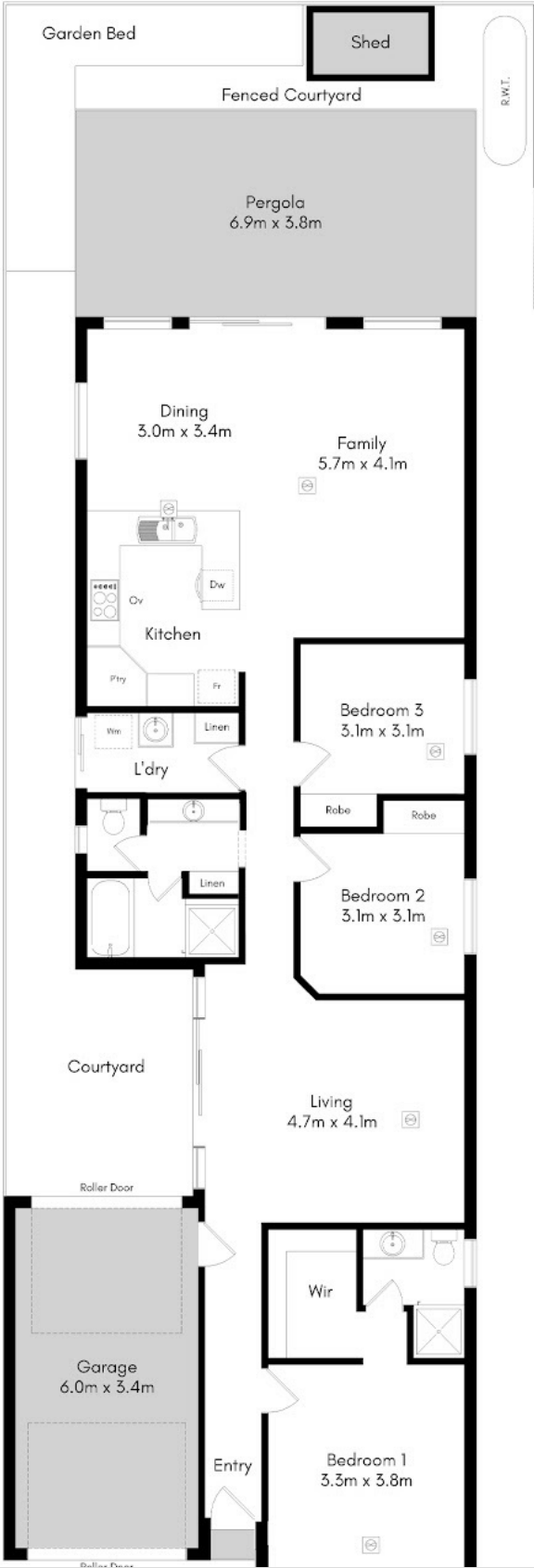
PRICE:
\$715,000

OPEN FOR INSPECTION:
N/A



Tricia Kernahan
0457314206
tricia@atrealty.com.au
tfkrealstate.com.au
RLA: 269823

Approximate Internal Area - 169 SQM



Disclaimer: Please note this floor plan is for marketing purposes and is to be used as a guide only. All dimensions are estimates only and may not be exact measurements.

DISCLAIMER

This drawing is for illustration purposes only. The information contained is NOT intended to be part of any contract. All measurements are approximate and should be independently verified. While every effort has been made to verify the correct details in this drawing, the agent, vendor or illustrator accept responsibility for any errors, omissions, or wrongful inclusions.

Tricia Kernahan
0457314206
tricia@atrealty.com.au
tfkrealestate.com.au

