



SOLD

IMPRESSIVE BEAUTIFULLY RESTORED COLONIAL QUEENSLANDER ON LARGE 2,681M2

"Hartley.c.1889"

This beautifully restored 5-bed Queenslander is in a private location on a large 2,681 square metres block (over half an acre)

The home was moved 30 years ago from James St in Toowoomba to Crows Nest.

The original owner (of European descent) built the home in 1889 and the Architect who designed the home was influenced by the traditional Australian Queenslander, Victorian-era, and European designs of the late 1800s to 1920. The home features European pyramid bay windows at the front with ornate timber trimmings.

The entry of the home is just as impressive when one enters the foyer that leads to the hallway featuring high arches, VJ walls, high 11.5 ft ceilings, and all doors entering the rooms have pushout fan light windows. Designed to keep the home cool in the summer months. This is a very cool home in the summer with high ceilings and cross ventilation throughout every room.

The kitchen has been renovated with new cupboards and solid white beech wood timber bench tops. Along with a quality Belling double oven stove and built-in dishwasher, this country kitchen is a joy to cook and dine in for all the family.

The closed-in veranda leads out from the kitchen, it faces north and is a very inviting area to enjoy the morning sun in the winter months.

The formal dining room featuring silky oak wall paneling will amaze any guest who dines in this room.

Moving on to the super king-size master bedroom, equipped with a sitting area, open fireplace, and reverse cycle heating and cooling system.

The 4th bedroom has an open fireplace, a pyramid bay window, a reverse cycle split system, and beautiful polished timber floors.

The 5th bedroom is currently used as a TV room. It has an open fireplace and a reverse-cycle system.

Polished timber floors are throughout the home. Only the bathrooms and Sunroom have lino flooring.

The impressive large formal lounge room or "Drawing Room" features cedar wood paneling, a Pyramid bay window, a reverse cycle split system, and an open fireplace.

All fireplaces in the home are functional.

Two bathrooms are located at each end of the home

The ceilings are insulated and solid cement stumps are underneath the home.

5 BED | 2 BATH | 3 CAR

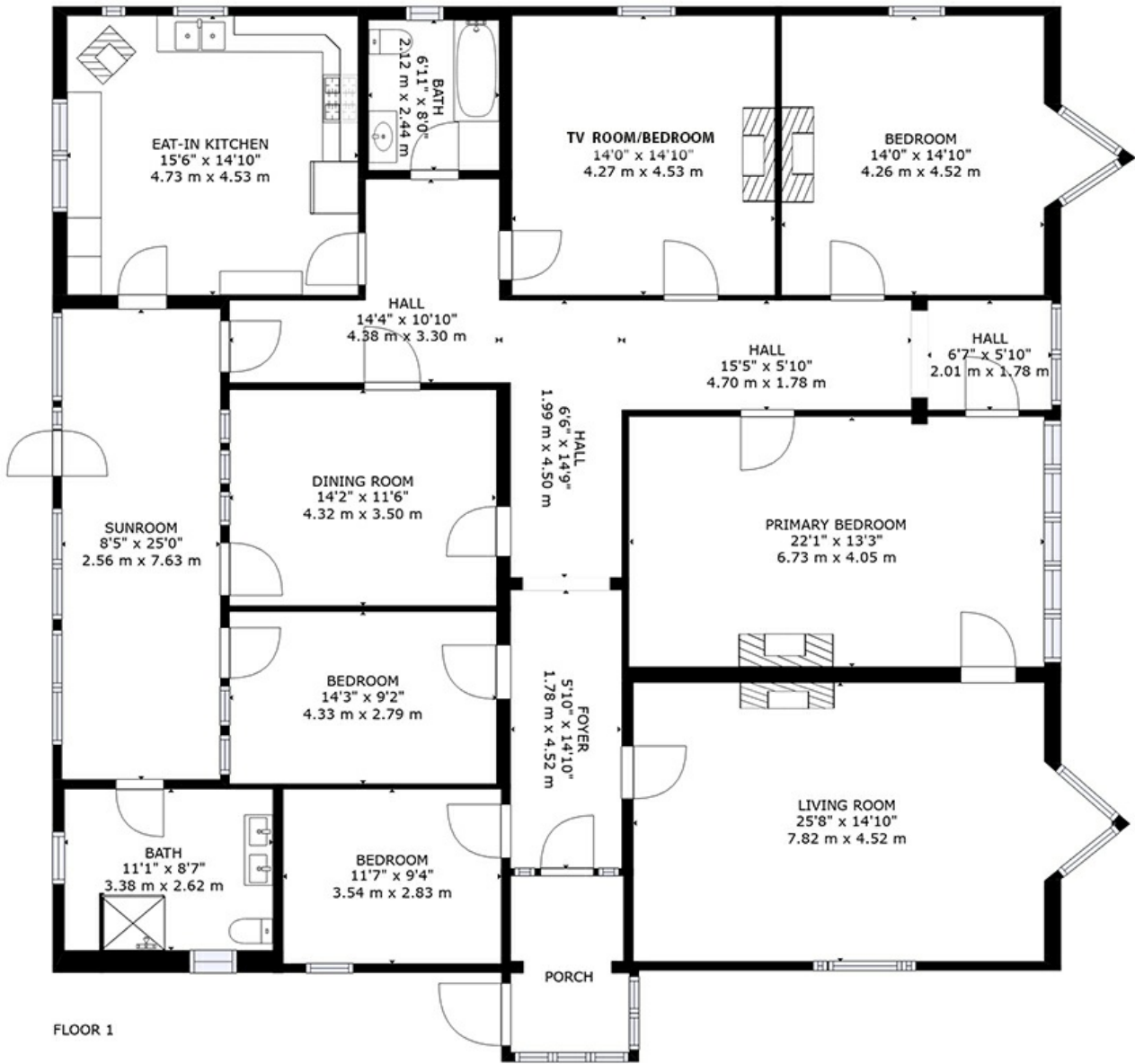
PRICE:
\$689,500

OPEN FOR INSPECTION:
N/A



Yvonne Bradley
0408181146

yvonne@atrealty.com.au
www.atrealty.com.au



GROSS INTERNAL AREA
 FLOOR 1: 2616 sq. ft, 243 m², EXCLUDED AREAS:
 PORCH: 57 sq. ft, 5 m²
 TOTAL: 2616 sq. ft, 243 m²
 SIZES AND DIMENSIONS ARE APPROXIMATE, ACTUAL MAY VARY.

Disclaimer: Please note this floor plan is for marketing purposes and is to be used as a guide only. All dimensions are estimates only and may not be exact measurements.