



SOLD

SOLD BY ROBYN HUNT REAL ESTATE

This impressive home of grand proportions is the perfect opportunity for anyone looking to buy in this gorgeous and sought-after location.

Featuring multiple open-plan living and dining areas, and a very versatile layout, this incredible home is set on a 4,454m² block that is steeped in privacy and allows for commanding North facing views.

Register your interest to inspect today by contacting Robyn Hunt on 0448 448 758 or robyn@atrealty.com.au

*** Disclaimer: Whilst every effort has been made to ensure the accuracy of these particulars, no warranty is given by the vendor or the agent as to their accuracy. Interested parties should not rely on these particulars as representations of fact but must instead satisfy themselves by inspection or otherwise.

5 BED | 3 BATH | 2 CAR

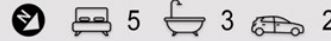
PRICE:
\$995,000

OPEN FOR INSPECTION:
N/A

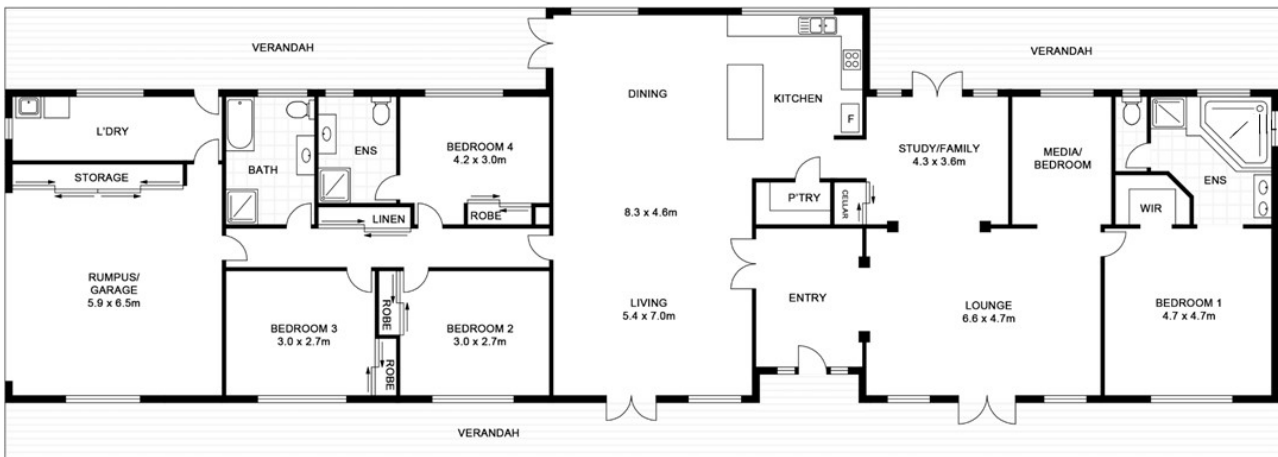
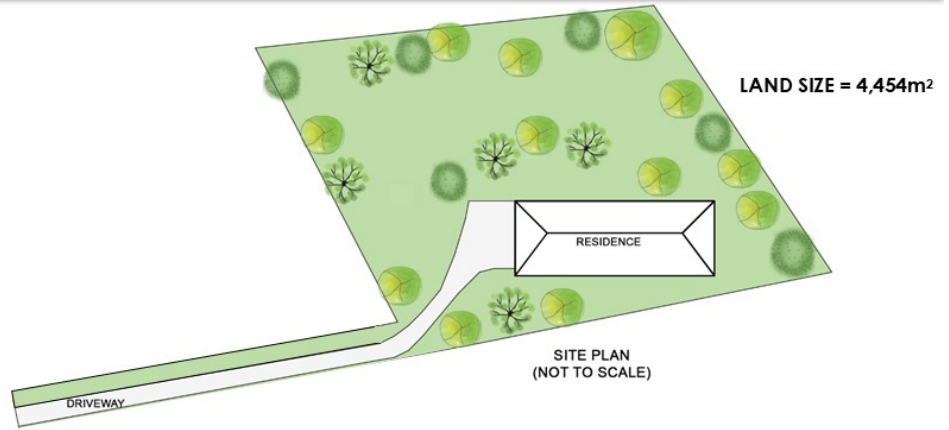
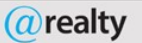


Robyn Hunt
0448448758
robyn@atrealty.com.au
www.atrealty.com.au

40 Whispering Valley Dve, Richmond Hill



APPROXIMATE
AREAS
INTERNAL: 184m²
EXTERNAL: 277m²



Disclaimer: Please note this floor plan is for marketing purposes and is to be used as a guide only. All dimensions are estimates only and may not be exact measurements.