



Sold

25 DARGLE WAY, CLYDE NORTH, VIC, 3978

4  | 2  | 2 



THE IDEAL PLACE TO CALL HOME IN CLYDE NORTH!

Located in the high sought-after Meridian Estate, this amazing 28.86sq, 4 bedroom home is well worth an inspection. With its modern features, neutral tones and quality fixtures and fittings this home has everything you could ever want.

This amazing property proudly boasting:

- Multiple Living Areas.
- Hostess Kitchen with walk in pantry.
- 4 spacious bedrooms.
- Study or Formal dining area
- Ducted Heating and Refrigerated Cooling.
- Alfresco Area and low Maintenance rear yard
- Plenty of storage cupboards.
- Double lockup garage with internal access.
- Approx: 512m2 of land.
- Plus, so much more...

With its modern design, high-quality finishes, and convenient location, this property is sure to appeal to buyers looking for a home that effortlessly combines comfort and elegance. Don't miss out on the chance to secure this exceptional property in one of the most sought after suburbs in the City of Casey.

PRICE:
\$820,000

OPEN FOR INSPECTION:
N/A






Paul May // 0417 488 721

paul.may@paulmay.com.au // paulmay.com.au

Sold

25 DARGLE WAY, CLYDE NORTH, VIC, 3978

4  | 2  | 2 

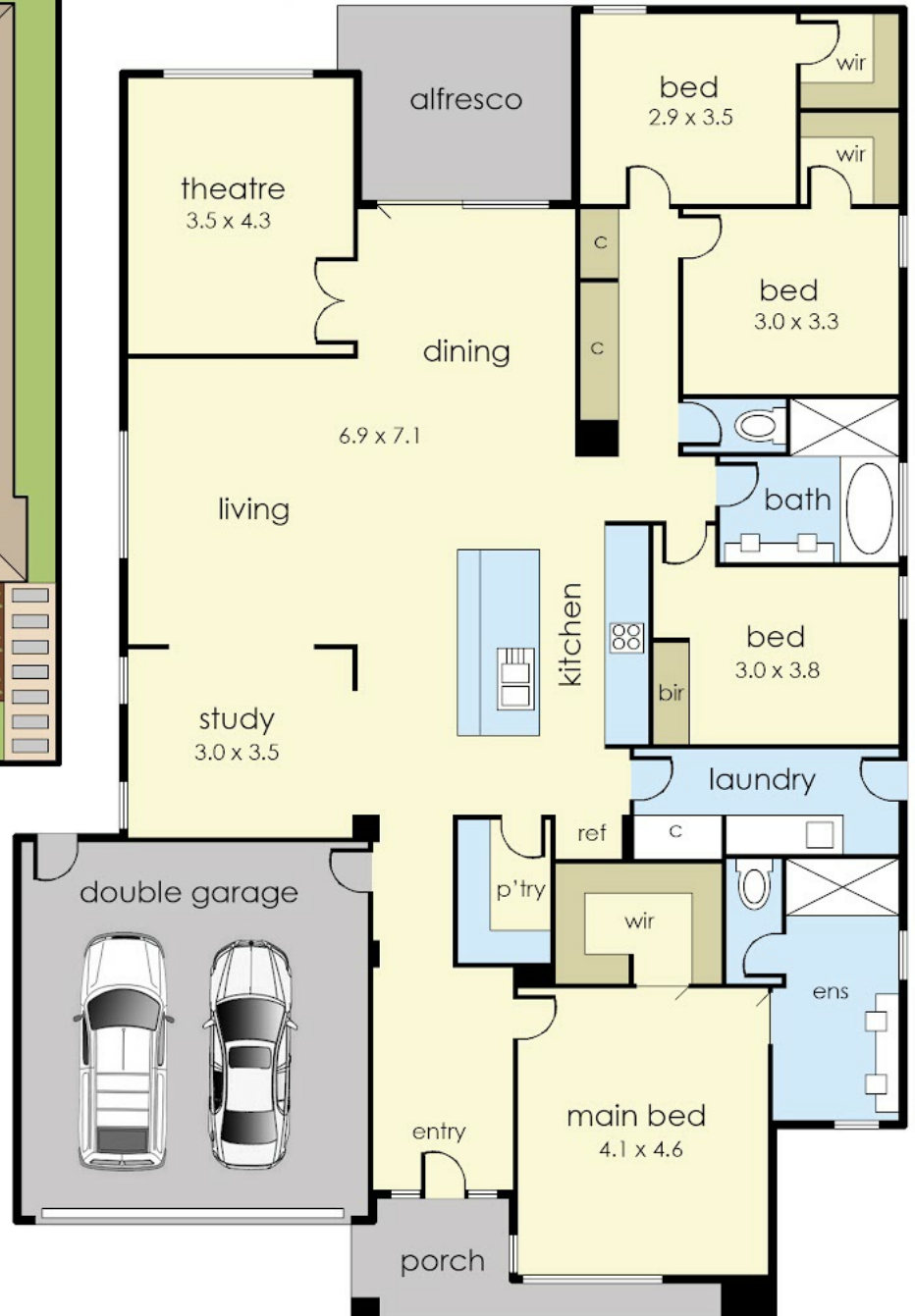
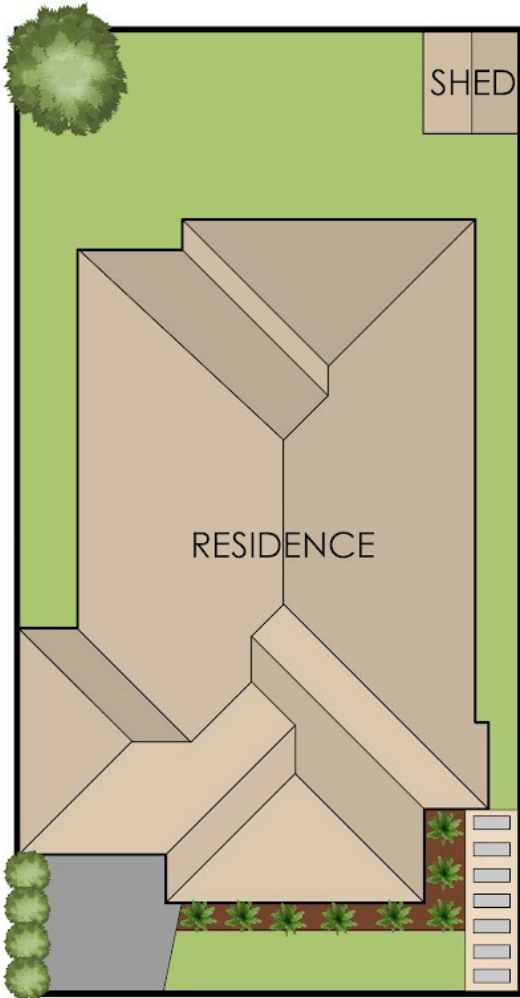


Paul May
Real Estate



Paul May // 0417 488 721

paul.may@paulmay.com.au // paulmay.com.au



25 Dargle Way, Clyde North

© Produced by DND Floor Plans

This floorplan is for illustration purposes only and no warranty is given to its accuracy. Purchasers are advised to carry out their own investigations.