



SOLD

DISCOVER THE PERFECT BLEND OF LUXURY LIVING ON A BLISSFUL 14 ACRES.

Are you looking for a stunning property on 14 acres and close to town? Look no further than this amazing opportunity to own your dream home with a dam, shedding, a large patio area, stunning views, and more!

The heart of this home is undoubtedly the kitchen with butler's pantry, large storage, and open plan living space, warmed by a woodfire during the chilly winter days and cooled with refrigerated cooling.

Indulge your culinary passions with the entertainer's kitchen, complete with all new appliances, stone benchtops which seamlessly opens to the deck. The undercover deck offers Pizza oven and BBQ plus a spectacular view of the surrounding countryside and the dam, where you can enjoy fishing, swimming, kayaking or relaxing.

With an emphasis on functionality, the home offers two distinct living areas, including the main living space graced by a mesmerizing view, and a large second living/theatre room that can be used as a home office, gym, or media room.

The property also boasts three King sized bedrooms, two bathrooms, The master bedroom has a walk-in robe and an ensuite with a large shower, modern cabinetry with double basins and anti-fog mirrors. The other two bedrooms have built-in robes and share a family bathroom, seamless large shower, freestanding bath, and separate toilet.

The property is fully fenced with a lane way to access paddocks.... Fencing perfect for a hobby farm. A large shed that can accommodate a car or tractor and plenty of room for the workshop. The shed also has power and water connected, making it ideal for hobbies or storage.

Additional-

- *30KW Solar
- *Large water tank
- *Fenced paddocks with troughs
- *Vegetable gardens & fruit trees
- *Chook Run
- *Dog Run
- *Large Dam with water pump

3 BED | 2 BATH | 2 CAR

PRICE:
\$1,050,000

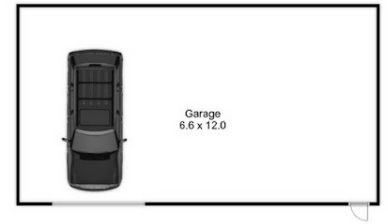
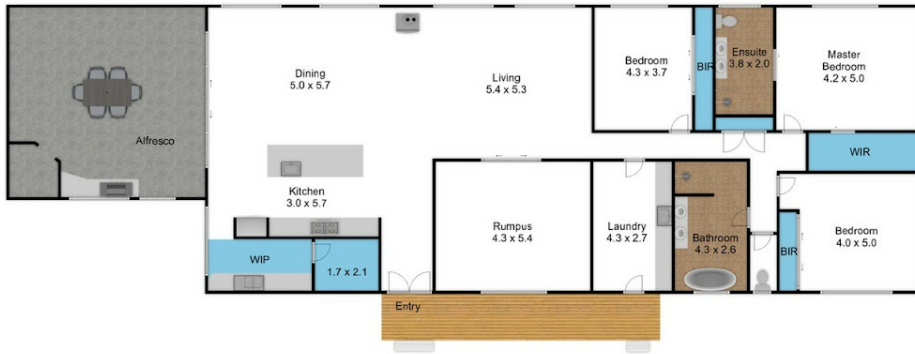
OPEN FOR INSPECTION:
N/A



Mel Ahearn
0409183763

mahearn@atrealty.com.au

atrealtypropertysalesgippsland.com.au




227 Coalville Road - Moe South


Disclaimer: Please note this floor plan is for marketing purposes and is to be used as a guide only. All dimensions are estimates only and may not be exact measurements.

Mel Ahearn
0409183763
 mahearn@atrealty.com.au
atrealtypropertysalesgippsland.com.au

