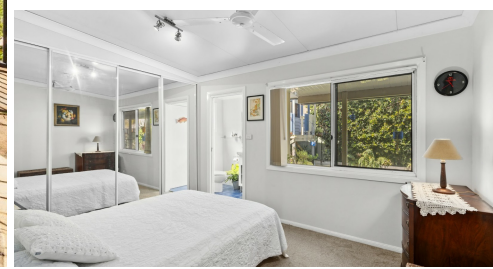


69 AUBREY CRESCENT, COFFS HARBOUR, NSW, 2450



**SOLD**

**SOLD BY CHERYL DONALDSON 0466 037 468**

Impeccably presented from front to back, the single level property will appeal to a broad audience. Large light filled open - plan living and dining with ceiling fans and split system air conditioning.

The kitchen is well appointed with all electric appliances and large areas of bench space and a corner pantry. This 4 bedroom home is very spacious in size and features, built-in robes in all bedrooms, the main features a spacious ensuite, and the other bedrooms are generous in size. The second living area has a wood fire and bifold doors that open out to the undercover entertaining area, perfect for barbecues or entertaining friends. Splash away the summer days around in the pool oasis in amongst lush gardens of tropical plants.

This single level residence is situated on a 501m<sup>2</sup> block and with easy care gardens is fully fenced.

Car accommodation is in the tandem garage which also has room for storage or a small workshop. There are loads of extras in this home such as large solar system in place with a battery, fully air-conditioned, solar hot water, Crimsafe screening, brand-new carpet, brand-new paintwork, and much more. Don't miss this opportunity for this ideal family home situated so close to town. call Cheryl Donaldson today on 0466 037 468.

**4 BED | 2 BATH | 2 CAR**

**PRICE:**  
**\$720,000**

**OPEN FOR INSPECTION:**  
**N/A**



**Cheryl Donaldson**  
**0466037468**  
cheryl@atrealty.com.au  
[www.atrealty.com.au](http://www.atrealty.com.au)



INT: 202 m<sup>2</sup>  
EXT: 14 m<sup>2</sup>

Scale in metres. Indicative only. Dimensions are approximate. All information contained herein is gathered from sources we believe to be reliable. However, we cannot guarantee its accuracy and interested persons should rely on their own enquiries.

69 Aubrey Crescent, Coffs Harbour



Disclaimer: Please note this floor plan is for marketing purposes and is to be used as a guide only. All dimensions are estimates only and may not be exact measurements.

**Cheryl Donaldson**  
0466037468  
cheryl@atrealty.com.au  
[www.atrealty.com.au](http://www.atrealty.com.au)

