



SOLD

LOCATION IS EVERYTHING

Located in the ever-desirable Mossfiel Estate, this 3-bedroom family home is set to impress both first home buyers and savvy investors alike. Situated on a generous block of 655sqm, the property captures the essence of spacious living, featuring a large lounge room that invites an abundance of natural light.

Step inside to discover a home where every room radiates comfort and convenience. The spacious lounge room, accentuated by large windows, serves as the heart of the home. Adjacent to the living area is a functional and generous kitchen space. The three bedrooms are well-appointed, each offering ample storage options to cater to a variety of lifestyle needs. Not to be overlooked, the home includes a newly installed heating system that ensures a cosy atmosphere year-round.

Externally, the property boasts a single car garage alongside a large carport, enveloped by a welcoming brick facade. The ample exterior spaces can easily be transformed to serve multiple purposes—be it additional storage or outdoor entertaining areas.

Located within close proximity to Hoppers Crossing Secondary College, Mossfiel Primary School, Hogans Corner Shopping Centre, and Pacific Werribee Shopping Centre, you'll find all you need within a short drive. And let's not forget the plentiful parklands and schools that make this location ideal for families.

Whether you're taking the first step on the property ladder or looking to expand your investment portfolio, this home ticks all the boxes. Don't miss out on securing a solid property in the heart of Hoppers Crossing—call to arrange your inspection today!

3 BED | 1 BATH | 1 CAR

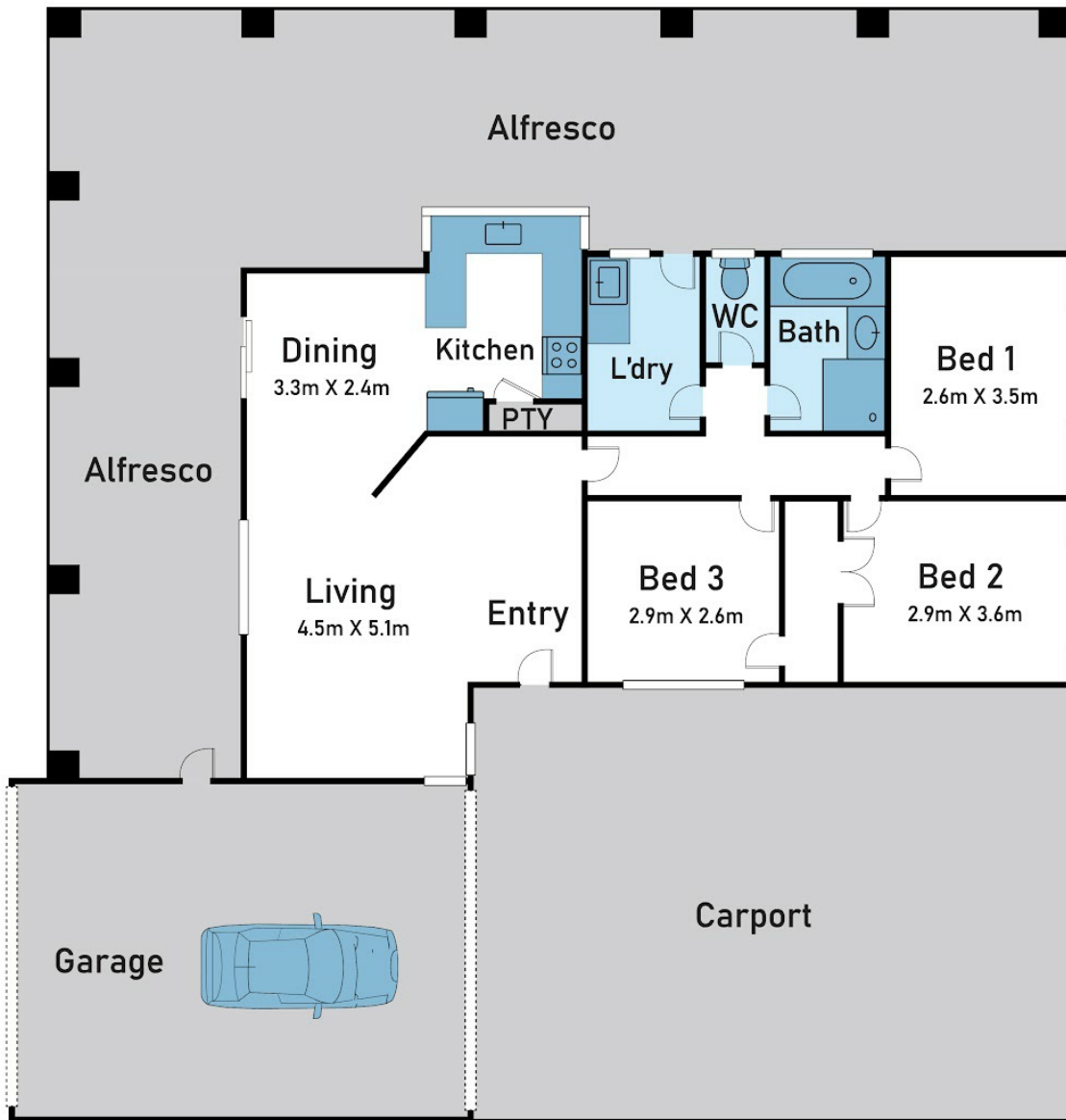
PRICE:
\$545,000

OPEN FOR INSPECTION:
N/A



Samuel Hogan
0401315234
samuel@atrealty.com.au
www.atrealty.com.au

Floor Plan



13 Julier Cres, Hoppers Crossing

* Dimensions are approximate and for illustrative purposes only

@realty

Disclaimer: Please note this floor plan is for marketing purposes and is to be used as a guide only. All dimensions are estimates only and may not be exact measurements.