



FOR SALE

GROUND FLOOR UNIT LOCATED IN A SMALL COMPLEX

Located in an elevated pocket of Yeronga, this 2-bedroom 1 bathroom ground floor unit will appeal to buyers looking for an affordable apartment in a solid double brick building. With the unit facing the resort style pool this property provides a relaxing lifestyle with very little maintenance required.

Features include:

- 2 bedrooms both with built-in-robos and air-conditioning
- modern kitchen with granite bench tops
- spacious bathroom incorporating the laundry
- separate toilet
- open plan dining/living area that opens onto the outside patio
- screens throughout
- remote controlled lock up garage with room for 2 small cars plus plenty of storage space
- body corporate fees are approximately \$3200 per year
- ready to move into

The property is adjacent to Yeronga Parkland, State Primary School, Yeronga Pool, neighbourhood shops, cafes and is in walking distance to the railway station.

2 BED | 1 BATH | 1 CAR

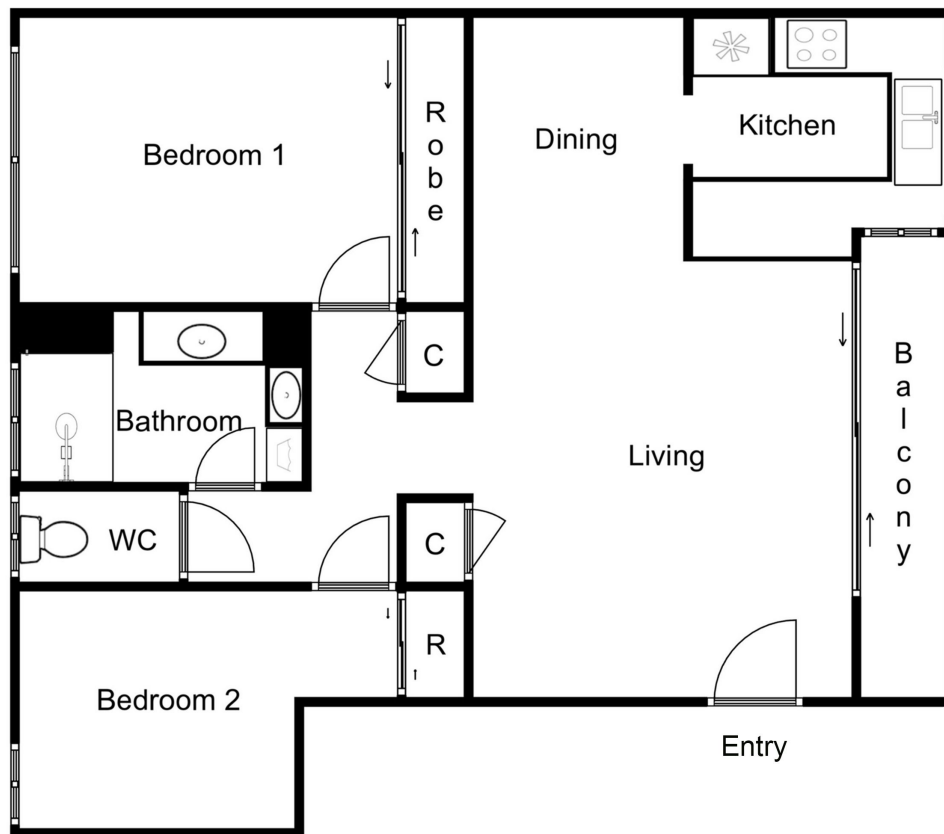
PRICE:
\$390,000

OPEN FOR INSPECTION:
N/A



Bruce Tame
0419699349
bruce@instylerealty.com.au
www.instylerealty.com.au

**2 / 115 Park Road,
Yeronga**



Whilst every attempt has been made to ensure the accuracy of this floor plan, all measurements shown or implied are approximate and no responsibility is taken for any error, or omission, nor is any warranty given. Kitchen, bathrooms, appliances, fixtures, fittings or any other items shown are representative only, and do not necessarily match what is in the property. Different levels may not align correctly. These plans are for illustrative purposes only and should be used as such. Copyright 2022 - www.realestatepics.com.au. All rights reserved.

Disclaimer: Please note this floor plan is for marketing purposes and is to be used as a guide only. All dimensions are estimates only and may not be exact measurements.