



**SOLD**

## CHERISHED FAMILY HAVEN ON SUPERB 6,737SQM ALLOTMENT

Picture perfect, this desirable acreage delivers everything a family needs to live comfortably, stay active and to effortlessly entertain in the privacy of your very own park-like grounds. The meticulously maintained home is thoughtfully designed to provide an abundance of living space, complemented by multiple alfresco entertaining areas and sensational leisure facilities. In an exclusive cul-de-sac on a 6,737sqm easycare block, the convenient address is close to Victoria Point shops, excellent schools, Redland Hospital and beautiful Moreton Bay. Spacious open plan lounge/dining room and separate rumpus for the kids  
Choice of decks and all-season verandahs to relax or gather with friends  
Sunlit swimming pool, half sized tennis court and children's playground  
Garden lovers' paradise, citrus trees, vegetable plots, gorgeous groves  
Updated gas kitchen has two ovens, stone counters, soft close cabinetry  
Double bedrooms, stylishly renovated bathrooms, second fitted with bath  
Attractive master adjoins refurbished ensuite and serene parents' retreat  
Enticing sunroom overlooks the pool and enjoys tranquil leafy outlooks  
Versatile guestroom or office, great potential to run business from home  
Whole house fan, 5kW solar, roof ventilation, skylights, air conditioning  
Renewed LED lighting, repainted internally/externally including the roof  
Native bee hives, lots of birds, natural bushland next door, no neighbours  
CCTV, ample off street parking, eight garages, upgraded bitumen driveway  
Located in Bay View State and Victoria Point State High schools catchment  
Near Pinklands Sporting Complex, Carmel, Sheldon and Faith Lutheran colleges

Tightly-held for 18 years, it is now time for the proud owners of this adored family sanctuary to take the next step in life. In move in ready condition, all you need to do is unpack and soak-up the idyllic lifestyle offered in this lovely community spirited neighbourhood.

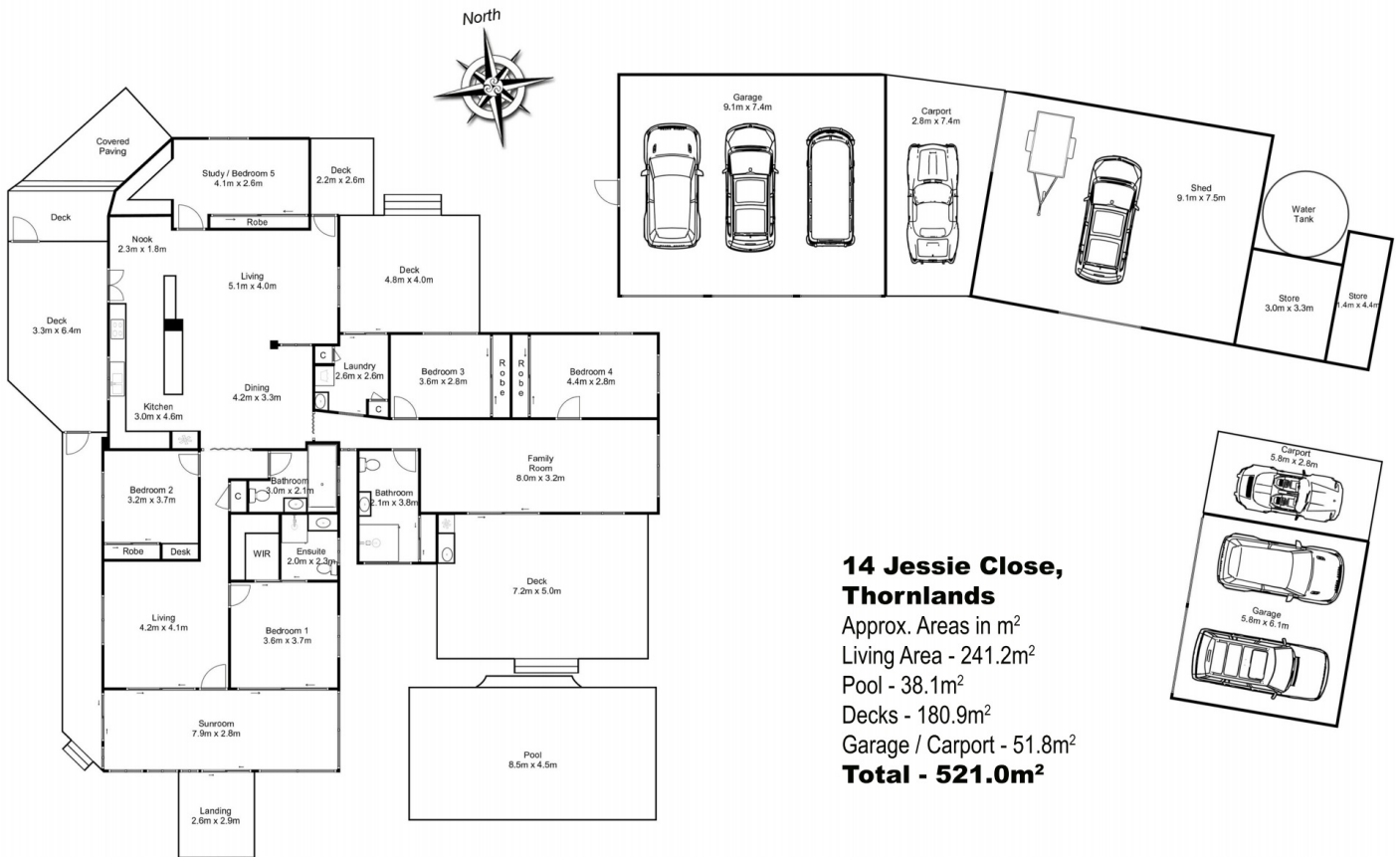
**5 BED | 3 BATH | 8 CAR**

PRICE:  
**\$1,335,000**

OPEN FOR INSPECTION:  
N/A



**Bruce Tame**  
**0419699349**  
bruce@instylerealty.com.au  
www.instylerealty.com.au



Whilst every attempt has been made to ensure the accuracy of this floor plan, all measurements shown or implied are approximate and no responsibility is taken for any error, or omission, nor is any warranty given. Kitchen, bathrooms, appliances, fixtures, fittings or any other items shown are representative only, and do not necessarily match what is in the property. Different levels may not align correctly. These plans are for illustrative purposes only and should be used as such. Copyright 2021 - [www.realestatepics.com.au](http://www.realestatepics.com.au). All rights reserved



Disclaimer: Please note this floor plan is for marketing purposes and is to be used as a guide only. All dimensions are estimates only and may not be exact measurements.