



SOLD

LARGEST VILLA - RIDGECREST RETIREMENT VILLAGE

Featuring a generously-sized living space, built-in robes in both bedrooms, and an undercover entertaining area, this unit is perfect for those who value comfort and easy-care living.

Indulge in the joy of cooking with the commodious electric kitchen that comes equipped with a dishwasher. Stay comfortable year-round with the ducted heating/cooling system, while the instant gas hot water enhances the convenience of this delightful unit. The small courtyard with a garden shed offers a serene outdoor escape, while the kitchen and dining area with access to a covered entertaining area creates a seamless indoor-outdoor flow.

The central bathroom, complete with a toilet, and an additional separate toilet further enhance the functionality of this exquisite unit. Parking is never an issue with the single carport that provides secure parking for your vehicle.

The kitchen/family/main bed all enjoy a northern aspect, welcoming ample natural light throughout the day. Recently painted, this unit is pristine and ready to move in and relish!

The exclusive Ridgcrest Retirement Village offers an array of community facilities such as a community bowling green, covered BBQ area, men's shed, hairdresser, and regular pharmacy run. Community buses operate a regular schedule to Belconnen Mall and Jamison Centre, enabling easy access to nearby amenities.

Features:

- 2 Bedrooms w/ Built-in Robes
- 1 Bathroom + Extra Toilet
- Electric Kitchen w/ Dishwasher
- Ducted Heating/Cooling
- Small Courtyard w/ Garden Shed
- Recently Painted
- 115sqm Living

2 BED | 1 BATH | 1 CAR

PRICE:

\$0

OPEN FOR INSPECTION:

N/A

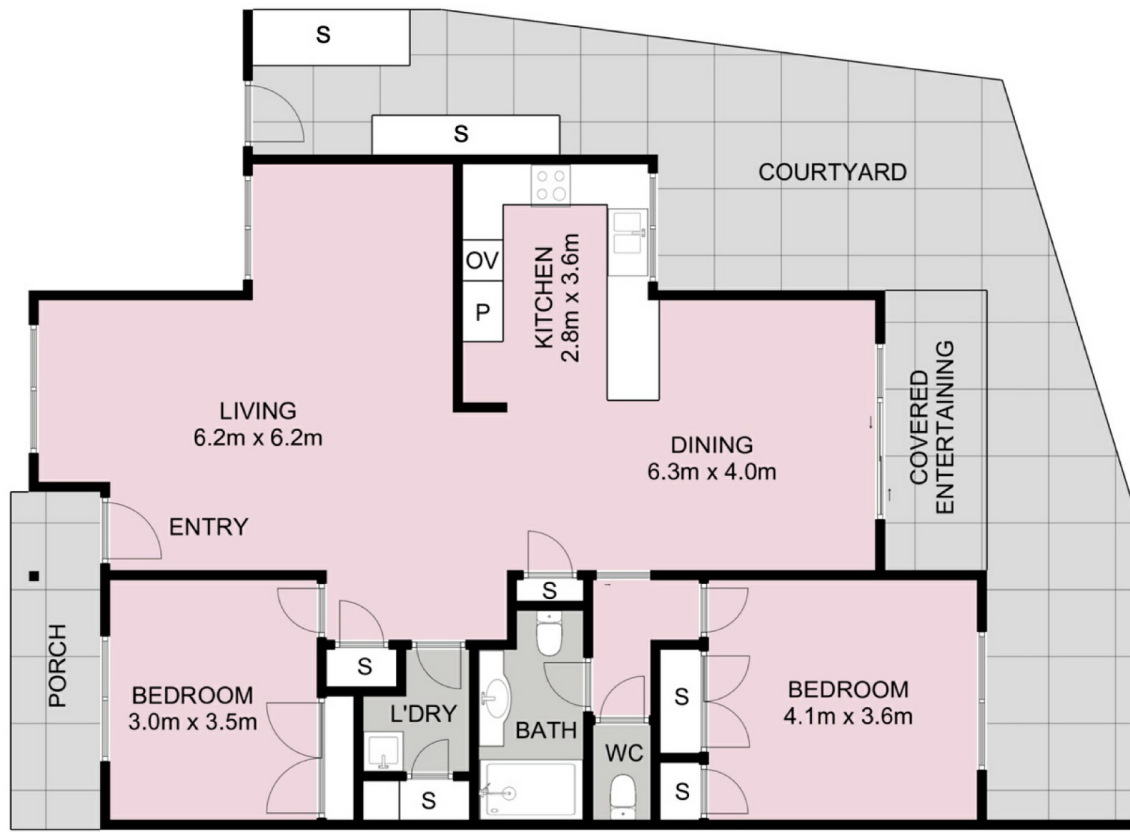


Catherine Halloran

0490045819

catherine@thepropertyagents.com.au

www.thepropertyagents.com.au



Indicative only. Dimensions are approximate. All information contained herein is gathered from sources we believe to be reliable. However, we cannot guarantee its accuracy and interested persons should rely on their own enquiries.

Disclaimer: Please note this floor plan is for marketing purposes and is to be used as a guide only. All dimensions are estimates only and may not be exact measurements.