



**SOLD**

## MODERN TOWNHOME IN A PRIME LOCATION!

A lifestyle of contemporary convenience awaits you in this Scandinavian-style townhouse, beautifully designed over 3 levels in the premium Alpine Villas complex.

Stunning timber flooring features throughout the open plan lounge and dining areas on the main floor, with natural light spilling in from the generous windows all with dual roller blinds. Enjoy relaxing on the balcony of an evening, with northerly views to the hills, creating a perfectly peaceful environment. The modern kitchen serves brilliantly with stone benchtops, ample storage and quality appliances including gas cooking and a dishwasher - there's no compromising on space here!

Upstairs features three large bedrooms, each equipped with mirrored built-in robes. A stylish ensuite serves the main bedroom, with a generous main bathroom for the others, each showcasing high-quality tiling, fixtures and fittings to match - there is also a convenient powder room for guests located on the main floor!

All of this sits at the heart of ever-growing Moncrieff amongst nearby shops, popular schools, parks and playgrounds, the upcoming Hindu temple and the site of a future corner store, while Gungahlin Marketplace and light rail station are conveniently located just a short drive down the road. This is an ideal opportunity for first home buyers, busy professionals or keen investors to join an increasingly sought-after location, positioned close to Moncrieff's upcoming developments and just minutes from Gungahlin CBD.

The future is bright for this spectacular modern villa, so be sure to add this one to the top of your shortlist!

### Features

- Tidy Front Courtyard W/ Covered Patio
- Electric R/C Ducted Heating & Cooling
- Timber Floors & Dual Roller Blinds to Living Areas
- Modern Kitchen w/ Dishwasher, Stone Benches & Gas Cooking
- Main Bathroom, Ensuite + Powder Room
- Built-Ins to All Bedrooms
- Gas Hot Water
- Under Stair Storage

**3 BED | 2 BATH | 2 CAR**

**PRICE:**

**\$0**

**OPEN FOR INSPECTION:**

**N/A**

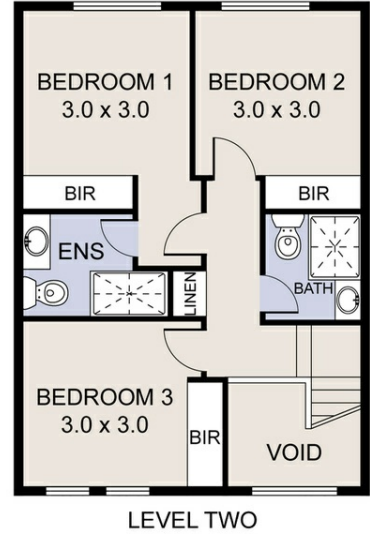
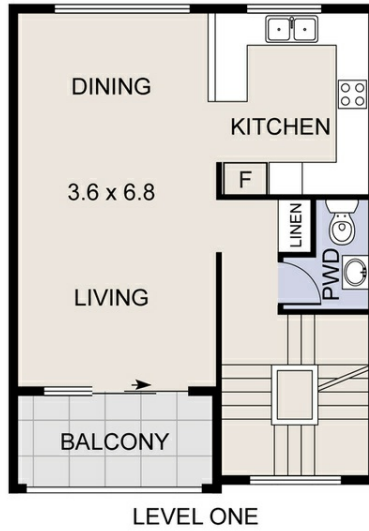


**Catherine Halloran**

**0490045819**

[catherine@thepropertyagents.com.au](mailto:catherine@thepropertyagents.com.au)

[www.thepropertyagents.com.au](http://www.thepropertyagents.com.au)



Disclaimer: Please note this floor plan is for marketing purposes and is to be used as a guide only. All dimensions are estimates only and may not be exact measurements.