



FOR SALE

COMFORT & SECURITY IN A PEACEFUL ESTATE

Set within Bruce's™ prestige Huntley Estate, this charming, freestanding and single level three bedroom townhouse promises a relaxed & stress-free lifestyle.

A freshly painted exterior invites you inside where the separate lounge and dining rooms enjoy warm carpeting and plenty of natural light. Continue through to the spacious tiled family area and well-appointed kitchen with ample storage as well as gas cooking, dishwasher and breakfast bar - ideal for a relaxed Sunday breakfast!

Nestled privately at the rear are the three generous bedrooms, each with built-in robes while the master boasts its own ensuite and walk-through robe.

Enjoy barbecues with friends in the generous & private outdoor entertaining area, with minimal yard to maintain so your weekends are yours to enjoy. A lovely playground right around the corner practically serves as your own backyard, with just an easy stroll to sprawling Fern Hill Park, bus transport and the convenient local shops on Thynne Street.

Major surrounding amenities include the Canberra Institute of Technology, the University of Canberra, Calvary Hospital and the Australian Institute of Sport, while just minutes away are Westfield Belconnen and Lake Ginninderra with approx. 15-mins drive to reach the Canberra CBD.

This is an ideal entry level opportunity, showcasing a beautifully maintained original home, ideal for future modernisation & conveniently positioned right at the front of this secure complex of only six townhouses! Don't delay your inspection!

Features

- Freestanding, Single Level Townhouse
- Separate Lounge & Dining
- Kitchen w/ Gas Cooking & Dishwasher
- Evaporative Cooling & Ducted Gas Heating
- Covered Entertaining Area
- Double Garage w/ Auto Door & Internal Access
- Alarm System
- Gas Hot Water

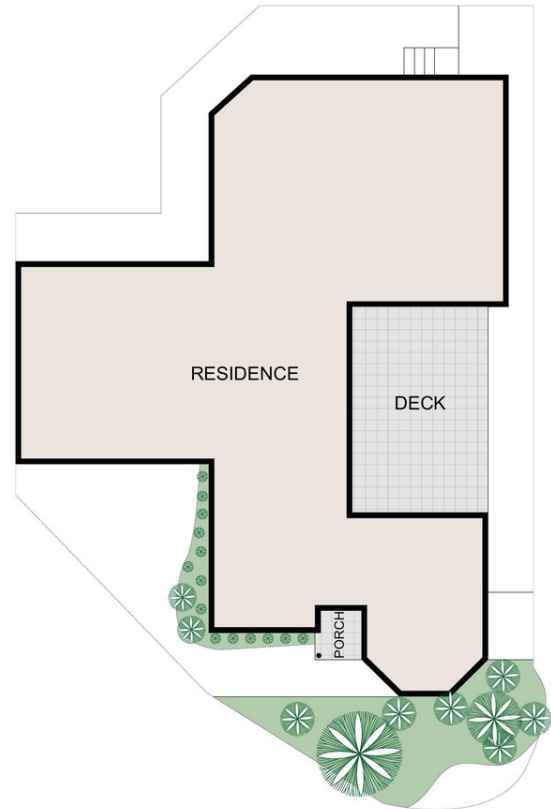
3 BED | 2 BATH | 2 CAR

PRICE:
\$750,000

OPEN FOR INSPECTION:
N/A



Catherine Halloran
0490045819
 catherine@thepropertyagents.com.au
 www.thepropertyagents.com.au



Disclaimer: Please note this floor plan is for marketing purposes and is to be used as a guide only. All dimensions are estimates only and may not be exact measurements.