



FOR SALE

WARM & INVITING HOME IN POPULAR LOCATION

Ideal for downsizers, investors or first home buyers and located on an easy-care block in a quiet pocket of Latham, this three bedroom cottage home with beautiful established gardens is a must for your shortlist!

Adorned with Karndean Korlok insulated vinyl timber flooring throughout, providing a warm appeal with an easy to clean and maintain practicality. You will love the separated dining and lounge areas, with calming views of the surrounding gardens from every window. The updated kitchen features quality appliances and a fantastic solar skylight.

All three bedrooms are serviced by a beautifully renovated central bathroom and separate toilet, conveniently tucked away from the main living areas, and the separate laundry has its own external access. Complete with ducted gas heating, and evaporative cooling, to keep you comfortable all year round - together with a host of other sensible updates to this well-maintained and beautifully cared for home.

Complete with a large verandah upon entry, this property also includes an enclosed carport with ample space to park additional vehicles on the block.

Features:

- 3 Bedroom Cottage Block Design
- Single Level w/ no Adjoined Walls & No Body Corporate
- Korlok Vinyl Timber Flooring Throughout
- Ducted Gas Heating (currently disconnected)
- Evaporative Cooling + Split System AC
- Separate Lounge & Dining Rooms
- Updated kitchen w/ Bosch Appliances incl. dishwasher & electric cooking
- Solar Skylight to Kitchen
- Renovated Bathroom
- Timber Venetians Throughout
- Built-In Robes to Master & 2nd Bedroom
- New Doors & Doorhandles Throughout
- Downlights Throughout

3 BED | 1 BATH | 1 CAR

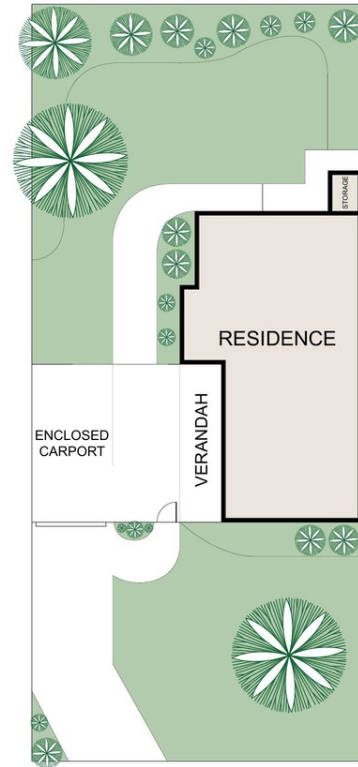
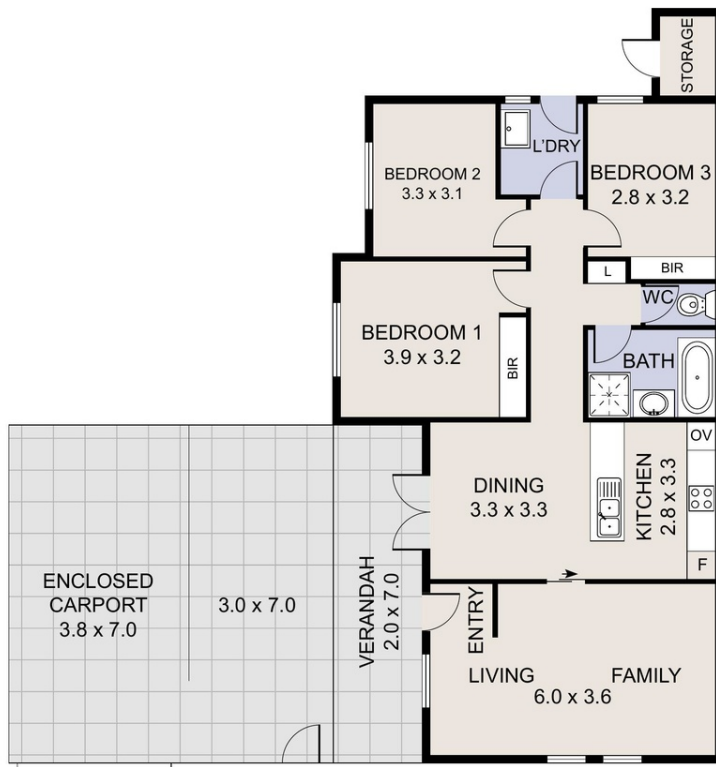
PRICE:
\$710,000

OPEN FOR INSPECTION:
N/A



Catherine Halloran
0490045819

catherine@thepropertyagents.com.au
www.thepropertyagents.com.au



Disclaimer: Please note this floor plan is for marketing purposes and is to be used as a guide only. All dimensions are estimates only and may not be exact measurements.