



**SOLD**

## SUNSET VIEWS OVER THE BRINDABELLAS!

Refreshed throughout, and positioned on a spacious block with beautiful sunset views over the Brindabellas, this three bedroom home is a wonderful place to call home.

Featuring new paint and carpet throughout, you will love the open planned layout of the living area - finished with dual roller blinds and downlights. The original kitchen offers ample cabinetry alongside new appliances, all overlooking the open rear garden.

Two of the three bedrooms are equipped with built in robes, both with mirrored sliding doors, and the main bedroom also enjoys its own ensuite & split system. The main bathroom has been refreshed with an updated shower screen, shower head and tap fittings, with the laundry also updated and complete with rear access.

At the rear of the home is the delightful elevated deck with pergola, outdoor lighting and blinds - perfect for entertaining friends and family while the kids play out in the extensive grassed backyard. The single carport is secure behind a lockable gate, with additional space to the side of the home for safely storing your boat or trailer.

Enjoy this quiet and convenient location, with parkland walking trails connecting you directly to the local playgrounds and sporting oval, while you're mere moments from Gilmore Primary School, and Caroline Chisholm School's Junior & Senior Campuses for a fantastic family-friendly environment.

Also within minutes are Chisholm Village and Calwell Shopping Centre for your local shopping needs, while a short drive further brings you to South Point for major retailers and plenty of entertainment.

### Features

- Fresh Paint & Carpet Throughout
- Ducted Electric Heating & Cooling
- Updated Electric Cooktop & Oven to Kitchen
- Main Bed w/ Ensuite & Split System AC
- Updated Fittings to Main Bath
- Built-Ins to Bedrooms 1 & 2
- Modern Deck w/ Sunscreen Blinds

**3 BED | 2 BATH | 1 CAR**

**PRICE:**

**\$0**

**OPEN FOR INSPECTION:**

**N/A**

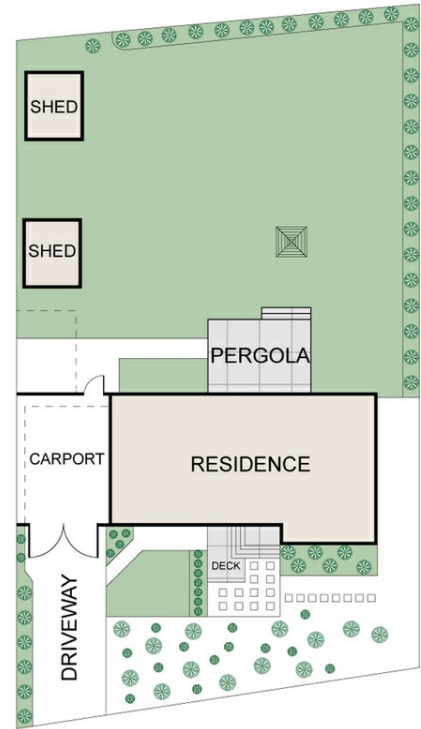


**Catherine Halloran**

**0490045819**

[catherine@thepropertyagents.com.au](mailto:catherine@thepropertyagents.com.au)

[www.thepropertyagents.com.au](http://www.thepropertyagents.com.au)



Disclaimer: Please note this floor plan is for marketing purposes and is to be used as a guide only. All dimensions are estimates only and may not be exact measurements.