



FOR SALE

BLANK CANVAS FOR FUTURE IMPROVEMENT!

Bright, comfortable and updated throughout, this three bedroom home is the perfect starter, providing easy living and lots of room to grow.

A solid, well maintained ex-govie, you'll be inspired by the other updated homes on the street to truly make this one your own – all on a large flat 756m2 block, ready to just move in and then plan for future renovations and extensions.

The painted brick exterior pairs perfectly with the refreshed interior, where an inviting front lounge welcomes you inside before branching into the separate meals area and updated kitchen with electric cooking, tiled splashback with ample bench space and cabinetry.

There are built-in robes to two of the three large carpeted bedrooms, all of which are accommodated by the updated central bathroom and separate toilet. A good-sized laundry adds to the convenience and provides rear access to the backyard.

The wide, open rear garden is a great private sanctuary complete with a variety of established fruit trees including plum, cherry, crab apple and baby fig. Side access is available from both sides of the home, with the long driveway leading to a single carport and attached garden shed.

You're a short walk from bus transport, parkland and sports facilities with just minutes to reach several popular public and private schools. Major amenities are a quick drive away, including Kippax Fair Shopping Centre and Westfield Belconnen for all of your shopping needs.

Don't miss this promising opportunity for first home buyers, keen renovators and savvy investors alike – submit an enquiry to register your interest!

Features

- Electric Ducted Heating/Cooling
- Downlights Throughout
- Large Linen Cupboard
- Gas Hot Water
- Full-Sized Rotary Clothes Line
- Colorbond Fencing

3 BED | 1 BATH | 1 CAR

PRICE:
\$715,000

OPEN FOR INSPECTION:
N/A

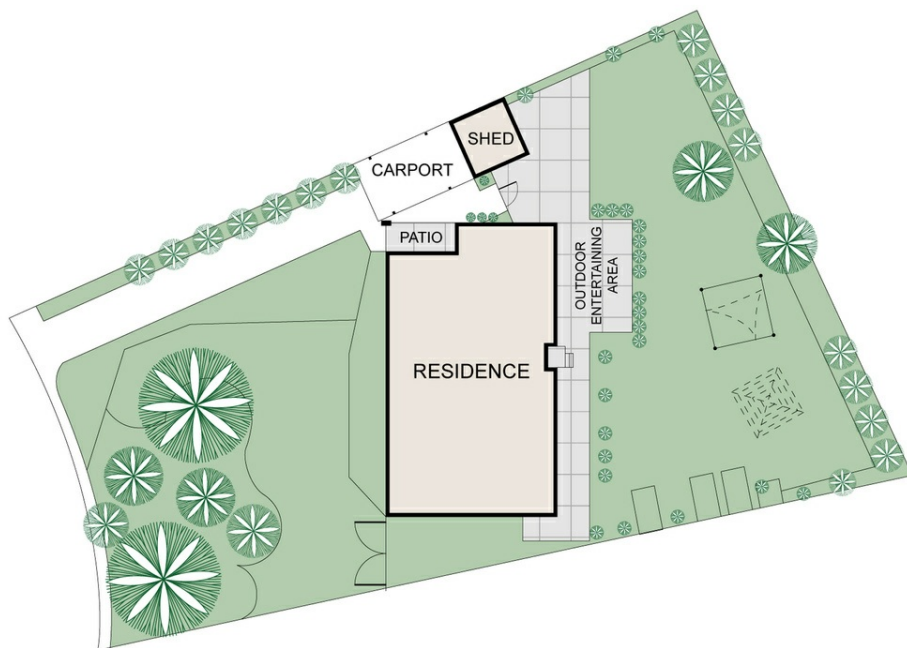
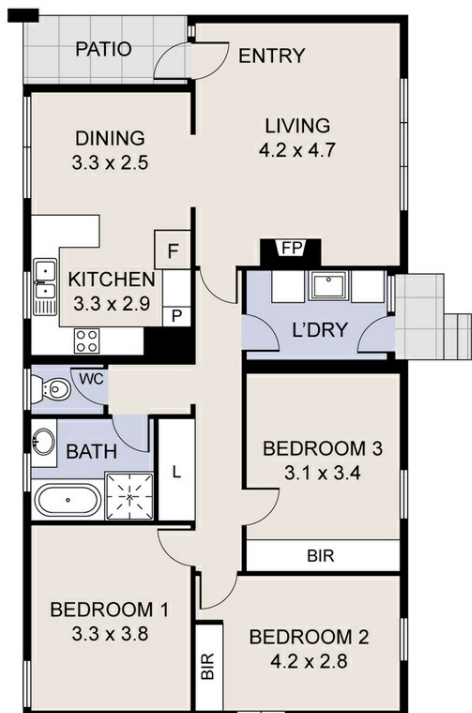


Catherine Halloran

0490045819

catherine@thepropertyagents.com.au

www.thepropertyagents.com.au



Disclaimer: Please note this floor plan is for marketing purposes and is to be used as a guide only. All dimensions are estimates only and may not be exact measurements.