



SOLD

ALL THE SPACE & COMFORT A FAMILY NEEDS

This spacious four bedroom family home promises a serene and peaceful lifestyle in the popular "Meadows Estate"™.

Recently painted, this quality Blackett Homes design opens to reveal an incredibly generous formal lounge & dining space, basking in the warmth of the natural light spilling through the surrounding garden windows. Continue through to reach the separate and equally spacious tiled family/meals area, overlooked by a beautifully renovated kitchen showcasing generous stone benchtops and quality appliances including gas cooking, NEFF oven and Miele dishwasher.

There are built-in robes to all four bedrooms and floor-to-ceiling tiles to the ensuite in the master, while the large main bathroom is fresh and modern servicing the remainder of the home.

Just off the meals area, taking advantage of the northerly aspect, is the expansive paved pergola - ideal for family barbecues or kids parties, leading right onto the lovely grassed backyard for plenty of private garden space for pets or play equipment.

You're just footsteps from the local playground and mere minutes from the nearby Woolworths, with only a short drive to reach further shops, schools and major amenities in Fraser, Charnwood and Holt. Join this quiet parkland pocket amongst other quality homes and bordered by the native Dunlop Grasslands, ideal for first home buyers and growing families looking for a welcoming area to settle into and build a wonderful life.

This outstanding opportunity is ready now, and the sellers are keen to move forward, so be sure to move this to the top of your shortlist!

Features

- 4-Bedroom Home On 462m² Block
- 168m² Interior + 39m² Garage
- Ducted Heating & Cooling
- Water Tank
- Garden Shed
- Cat-5 Network Cabling
- 6.6kW Solar Panels w/ Battery
- Zoned For Fraser Primary School

4 BED | 2 BATH | 2 CAR

PRICE:

\$0

OPEN FOR INSPECTION:

N/A

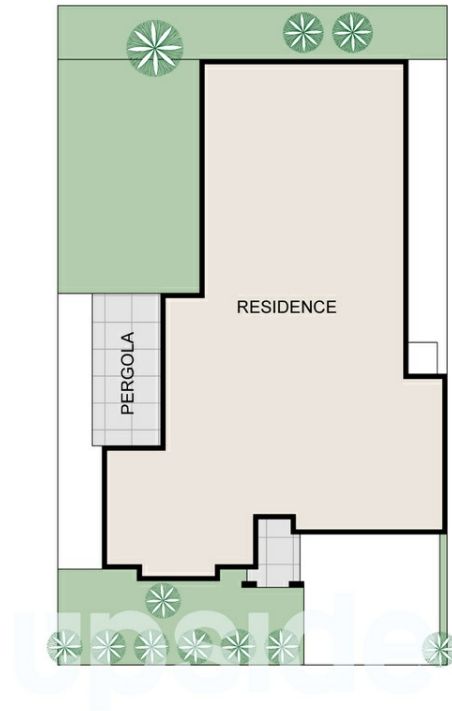


Catherine Halloran

0490045819

catherine@thepropertyagents.com.au

www.thepropertyagents.com.au



Disclaimer: Please note this floor plan is for marketing purposes and is to be used as a guide only. All dimensions are estimates only and may not be exact measurements.