



SOLD

EASY LIVING AT ITS BEST!

With fresh updates throughout, this charming three bedroom townhouse offers relaxed low-maintenance living in peaceful "Southwood Haven"™.

Join this secure, family-friendly community in an ideal position at the entry of the complex, perfect for first home buyers and downsizers looking for peace and quiet while still close to all local amenities.

Calming earthy tones feature throughout this warm and inviting interior, opening to a spacious air-conditioned living room that leads through to a separate family/meals space. The renovated kitchen is well equipped with a new Bosch oven, gas cooktop and ample bench space and cabinetry. There are built-in robes to two of the three sizeable bedrooms, with the master benefiting from ensuite access to the renovated two-way bathroom, while the third bedroom provides fantastic functionality as a guest bedroom or den!

Beautifully landscaped at the rear of the home is the private courtyard with pergola, creating a delightful atmosphere for alfresco entertaining with a lovely low-maintenance garden to enjoy.

Completing the home is a single garage with auto door and internal access. Nearby parks and bus stops are in close walking distance, with just a little further to reach local schools, Calwell Shopping Centre and more.

Offers will be finalised on 21 February, please email your enquiry for more information.

Features

- Low-Maintenance 3-Bedroom Townhouse
- Freestanding & Single Level
- Freshly Updated & Painted Throughout
- Split System AC to Living Area
- Gas Ducted Heating
- Separate Lounge + Family/Meals
- Updated Kitchen w/ Gas Cooking + New Bosch Oven
- Renovated 2-Way Central Bathroom
- Laundry w/ Rear Access
- Private Landscaped Courtyard / Pergola

3 BED | 1 BATH | 1 CAR

PRICE:

\$0

OPEN FOR INSPECTION:

N/A

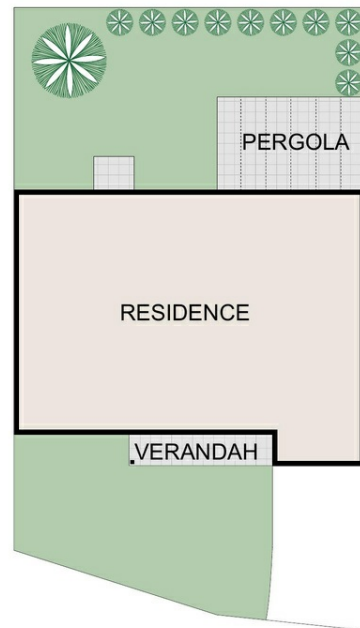
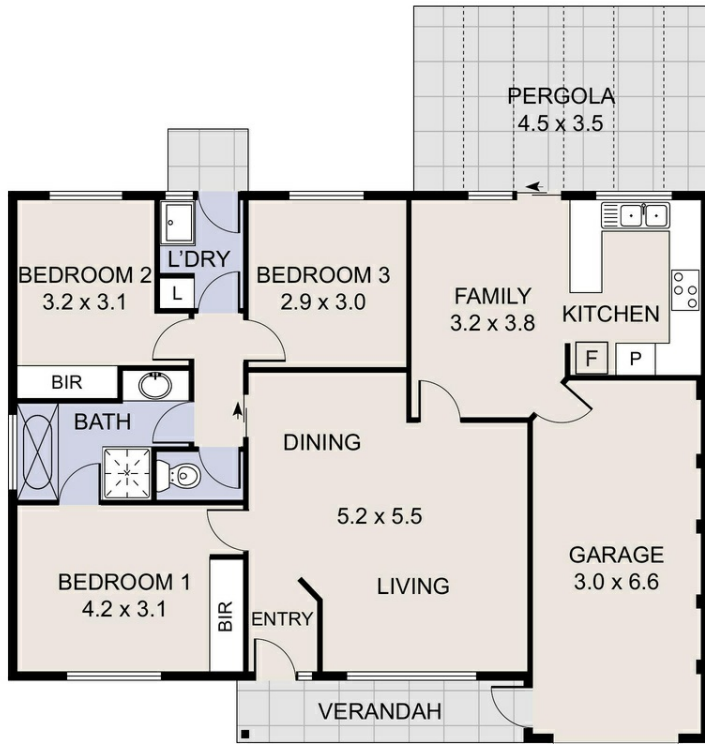


Catherine Halloran

0490045819

catherine@thepropertyagents.com.au

www.thepropertyagents.com.au



Disclaimer: Please note this floor plan is for marketing purposes and is to be used as a guide only. All dimensions are estimates only and may not be exact measurements.