



**SOLD**

## MODERN, PRIVATE & WELL LOCATED

Perfect for first home owners, young families or professional couples, this three bedroom townhouse ticks all the boxes from location to lifestyle to convenience.

Boasting a contemporary vibe from the moment you enter, you're greeted with a spacious front lounge room with floating floors, followed by a separate tiled family/meals area, and a modern kitchen adorned with stone benchtops, a pristine island bench, gas cooking and dishwasher. Downstairs also features a laundry with a guest toilet, and a generous double garage with automatic door and internal access.

Awaiting you upstairs are three spacious bedrooms, each with built-in robes, and a master with its own ensuite plus a balcony where you can enjoy your morning cuppa or a glass of wine after a long day at work.

Additional features include ducted heating/cooling an attractive front courtyard, providing added space to enjoy a bbq with friends on summer days and balmy nights - this beauty has it all!

This two-storey design is positioned opposite parkland where you can enjoy leisurely walks, whilst still close to Casey Market Town for all your main amenities.

Whether you're looking for an affordable first home or a fantastic investment opportunity, this won't disappoint. Don't miss the next inspection.

### Main Features:

- 3 Bedrooms with Built-in Robes
- Master with Ensuite & Balcony
- 2 Bathrooms
- Front Lounge Room
- Separate Family/Meals Area
- Modern Kitchen
- Laundry with Downstairs Toilet
- Ducted Heating/Cooling
- Double Garage

### Property Specs:

**3 BED | 2 BATH | 2 CAR**

**PRICE:**

**\$0**

**OPEN FOR INSPECTION:**

**N/A**

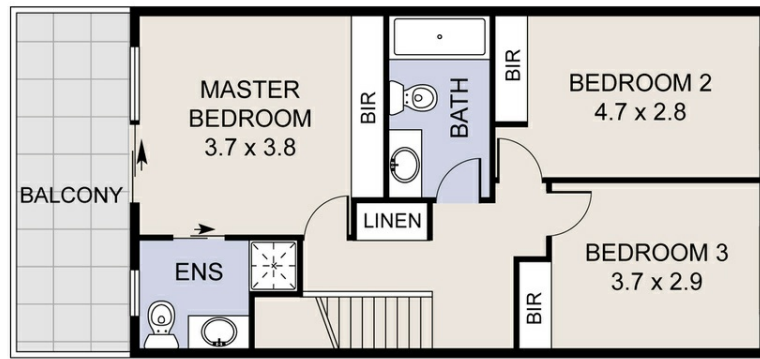


**Catherine Halloran**

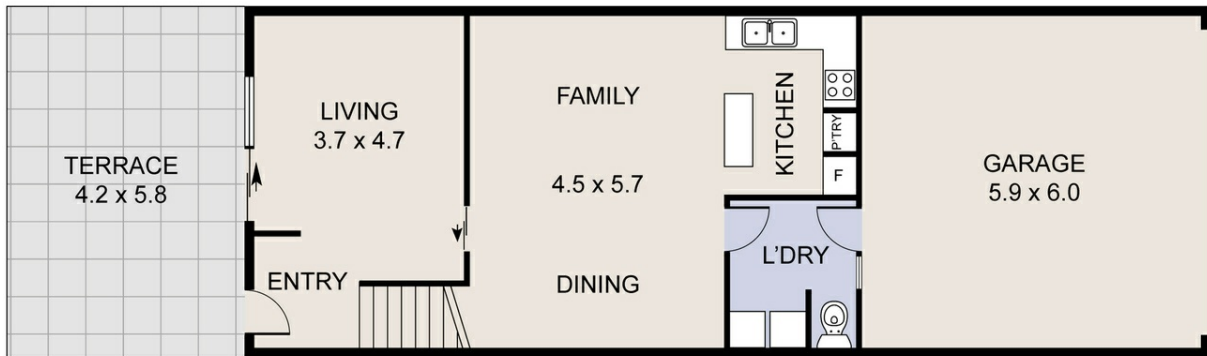
**0490045819**

[catherine@thepropertyagents.com.au](mailto:catherine@thepropertyagents.com.au)

[www.thepropertyagents.com.au](http://www.thepropertyagents.com.au)



FIRST FLOOR



GROUND FLOOR

Disclaimer: Please note this floor plan is for marketing purposes and is to be used as a guide only. All dimensions are estimates only and may not be exact measurements.