



# FOR SALE

## SUPERB FAMILY HOME PLUS CARAVAN STORAGE

Welcome to this beautiful, quality, light filled 4 bedroom, 2 bathroom fully renovated family home. Upstairs features timber look flooring throughout & plantation shutters on most windows enhancing the light & space that this home exudes. The 3 bedrooms upstairs are a good size all with built in robes & ceiling fans and access to the large main bathroom.

Central to the home is a well appointed modern kitchen with stone bench tops, dishwasher & ample cupboard space. This overlooks the fabulous family room with its own bathroom & is a great place to enjoy a morning coffee in the sun.

Downstairs is a wonderful surprise as you will find a gorgeous 4th bedroom/studio perfect for teenagers or as a guest retreat as has it has its own access. The large single lock up garage is remote controlled & there is a huge workshop/storage area located under the house, perfect for the handyman.

For the entertainers we have you covered!

With an outdoor undercover kitchen/BBQ area complete with power & water, cook up a storm whilst the kids play in the beautiful low maintenance back yard. The large feature Alfresco dining caters for everyones needs & is the perfect place to entertain. Enjoy fabulous sea breezes or if the weather turns cold or wet then roll down the side awnings for all weather access.

Situated on an elevated 800m2 fully fenced block, this home also features full double gate access to caravan pad, split system air conditioning, is close to child care, schools, shopping & just a short drive to our beautiful beaches.

4 BED | 2 BATH | 1 CAR

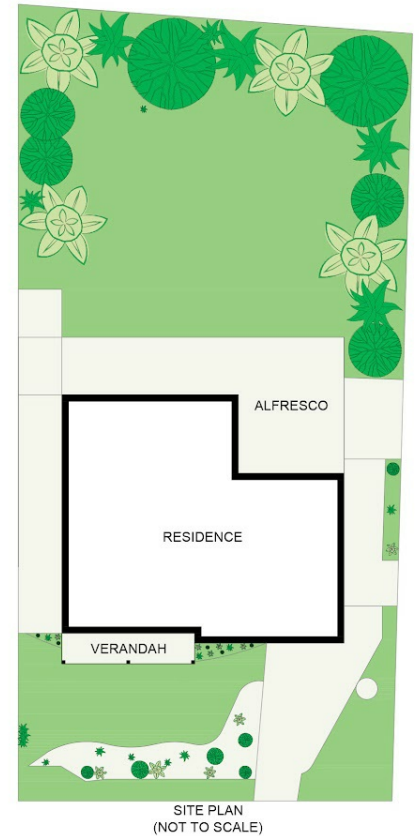
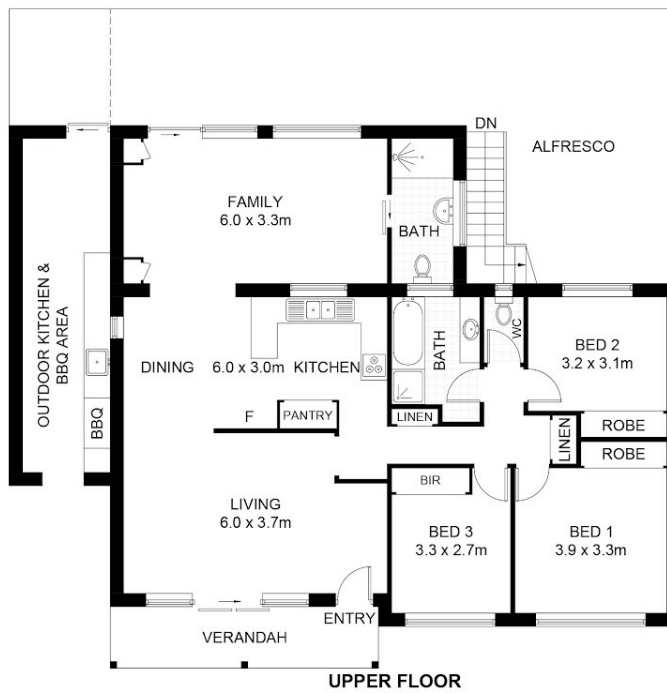
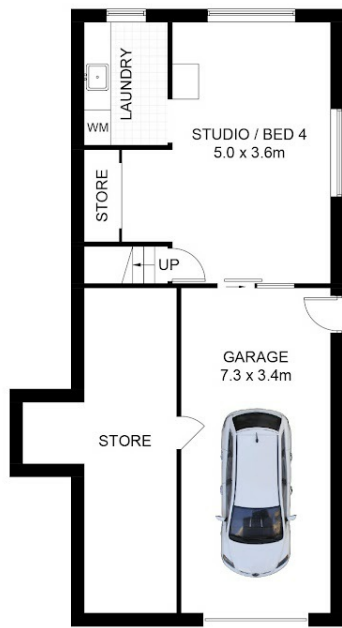
PRICE:  
\$845,000

OPEN FOR INSPECTION:  
N/A



**Nicole Stark**  
0437500962  
nicolestark@atrealty.com.au  
[www.atrealty.com.au](http://www.atrealty.com.au)

Approximate Gross Internal Area = 186.6 sq m  
(Including Garage)



**12 Kane Crescent, Coffs Harbour, NSW 2450**

DISCLAIMER: PLANS SHOWN ARE FOR PRESENTATION PURPOSES AND ARE NOT PART OF ANY LEGAL DOCUMENT. ALL MEASUREMENTS AND FIGURES ARE APPROXIMATE.

Disclaimer: Please note this floor plan is for marketing purposes and is to be used as a guide only. All dimensions are estimates only and may not be exact measurements.