



SOLD

PERFECT LOCATION AND GENEROUS IN SIZE.....

Situated in the absolute heart of Drouin on the very edge of civic park sits this charming, neat, and exceptionally maintained 2-bedroom unit. The location of this unit is extremely unique and convenient, just a stroll to the local park and five minutes to town centre, Drouin recreation reserve, GP clinics, V-line train and markets. Public transport can also be accessed easily, as there are many bus stops nearby.

Moving inside the unit features two large bedrooms, Master with WIR and open living area with plenty of natural light, as well as a roomy kitchen with modern appliances. The property also has a second living area that could easily be utilized as a third bedroom.

Additional features include:

- A big bathroom with a shower and bath
- A large separate laundry room.
- Remote single car garage with internal access
- Private rear courtyard
- Plenty of storage cupboards throughout
- Spacious varandah, outdoor sitting area where you can relax and enjoy the view of the easily maintainable yet beautiful gardens.
- No body corporate fees

This property is a rare opportunity to own a charming and elegant unit that offers both comfort and convenience. Don't miss this chance to make this your dream home! Contact us today to arrange a viewing or to find out more information.

2 BED | 1 BATH | 1 CAR

PRICE:
\$495,000

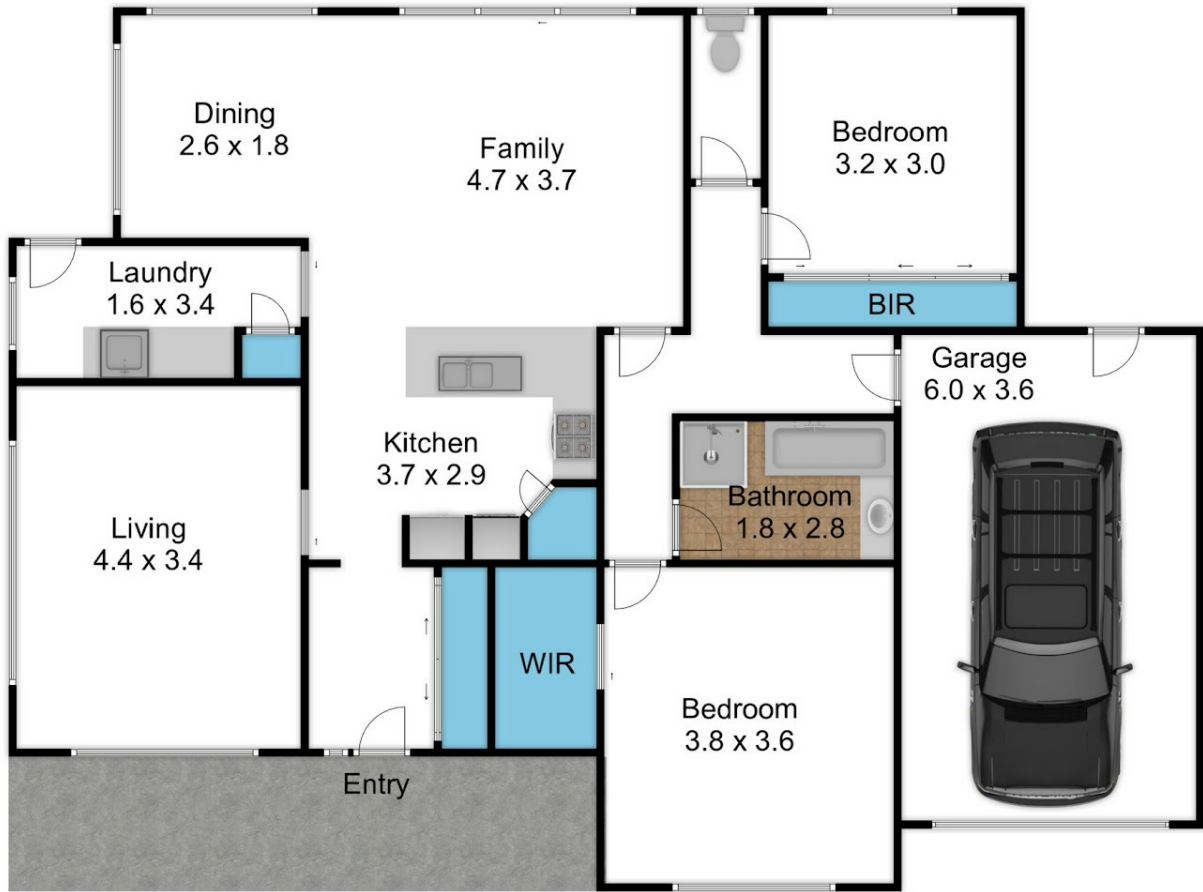
OPEN FOR INSPECTION:
N/A



Mel Ahearn
0409183763

mahearn@atrealty.com.au

atrealtypropertysalesgippsland.com.au



4/4 Fuhrmann Court - Drouin



Disclaimer: Please note this floor plan is for marketing purposes and is to be used as a guide only. All dimensions are estimates only and may not be exact measurements.