

SOLD

SPECTACULAR LAKE AND GOLF COURSE VIEWS, SERENITY AND SIDE ACCESS FOR CARAVAN - A PERFECT LIFESTYLE CHOICE!

This is a beautiful home, aspected for the winter sun with all the modern features you could wish for. The home presents as new, is only a couple of years old and still has builders new home warranty. The home is situated in a quiet location on an easy care 640 sqm block, backing on to a select private section of the golf course. Ideal for the golfer or those who want to enjoy the beautiful scenery. A real bonus which makes this home a stand-out, is the rare wide side access with hard stand, where you can park your caravan, RV or boat. It is located within easy walking distance from the Pacific Harbour Golf & Country Club with its restaurant, bar, gymnasium, swimming pool and tennis courts.

Features of the home include the following:

- * four bedrooms,
- * two bathrooms,
- * spacious open plan living area,
- * media room
- * large double garage,
- * the kitchen is a chef's delight and has stone bench tops, walk-in pantry, double sinks, 90 cm wide oven and plenty of storage space.
- * the master bedroom features an ensuite and walk-in wardrobe with great views of the golf course
- * the other three spacious bedrooms having built-in wardrobes.
- * the open plan living area flows out to beautiful scenic views and a covered outdoor entertainment area.
- * a great place to relax with family and friends.
- * 5 metre wide secure side access with a hardstand for a caravan, boat or RV
- * high ceilings
- * External spa deck, with two person spa
- * security system
- * air-conditioning to living area and ceiling fans throughout
- * large outdoor alfresco with blinds
- * 6.5 kws solar power

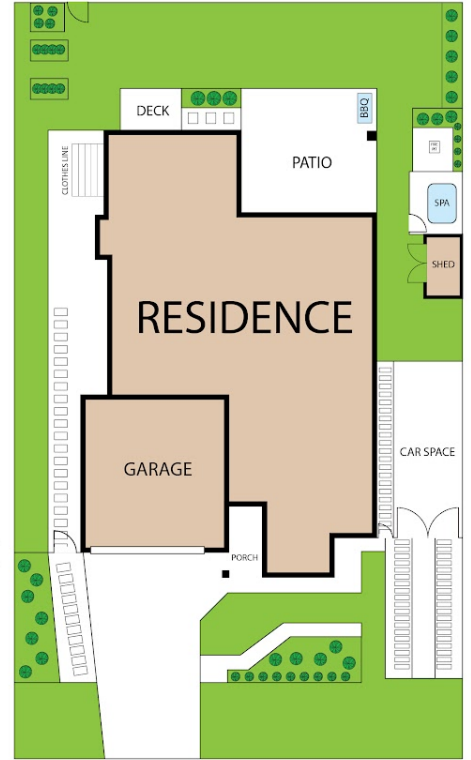
4 BED | 2 BATH | 2 CAR

PRICE:
\$970,000

OPEN FOR INSPECTION:
N/A



Ross Hincksman
0417687379
rossh@atrealty.com.au
www.atrealty.com.au



69 Callisia Crescent, Bribie Island QLD, Australia, Banksia Beach 4507
 TOTAL APPROX. FLOOR AREA 192 SQ.M

Whilst every attempt has been made to ensure the accuracy of the floor plan contained here, measurements of doors, windows, rooms and any other items are approximate and no responsibility is taken for any error, omission, or misstatement. This plan is for illustrative purposes only and should be used as such by any prospective purchaser.

Disclaimer: Please note this floor plan is for marketing purposes and is to be used as a guide only. All dimensions are estimates only and may not be exact measurements.