



**SOLD**

## STUNNING 5-BEDROOM COASTAL OASIS AWAITS YOU!

Discover the epitome of modern living in this immaculate 5-bedroom brick and tile home, boasting breathtaking views of picturesque Budgewoi Lake. Perfectly situated just minutes away from local schools, shops, lakefront leisure, pristine beaches, medical facilities, and convenient access to the M1 Motorway, this is an opportunity you won't want to miss!

### Key Features:

1. Spacious Bedrooms: Enjoy the luxury of five generously sized bedrooms, providing ample space for your family's comfort and privacy.
2. Downstairs Ensuite: The downstairs bedroom includes an ensuite, offering convenience and flexibility for guests or extended family.
3. Resort-Style Living: Dive into relaxation with your very own above-ground swimming pool, complete with a dedicated entertaining deck, ideal for hosting poolside gatherings.
4. Oversized Double Garage: Keep your vehicles and belongings secure in the oversized double garage, providing ample storage space.
5. Multiple Outdoor Entertaining Areas: Embrace the outdoors with multiple outdoor entertaining spaces, perfect for alfresco dining, barbecues, and enjoying the beautiful surroundings.
6. Expansive 558m2 Level Block: The property sits on a spacious 558m2 level block of land, offering plenty of room for outdoor activities and gardening.
7. Off-Street Parking: There's no need to worry about parking space for your boat, caravan, or additional vehicles, thanks to the abundance of off-street parking.
8. Solar-Powered: Benefit from cost-efficient living with solar panels and solar hot water, reducing your environmental footprint and energy bills.
9. Modern Upgrades: The updated bathrooms and kitchens feature contemporary designs and

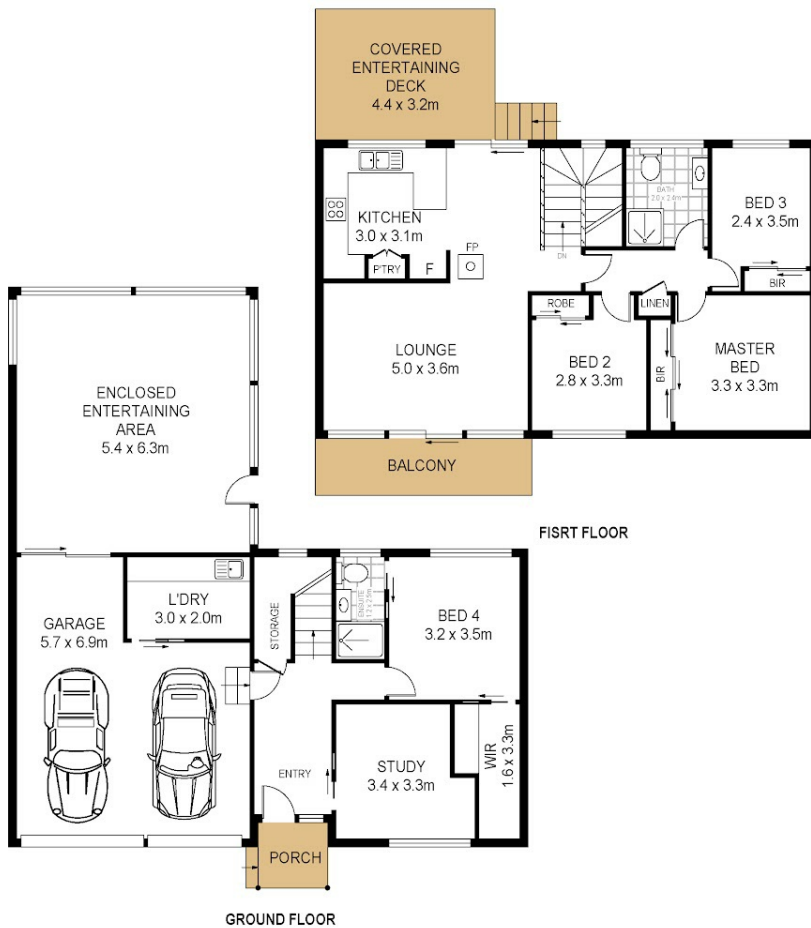
5 BED | 2 BATH | 2 CAR

PRICE:  
\$800,000

OPEN FOR INSPECTION:  
N/A

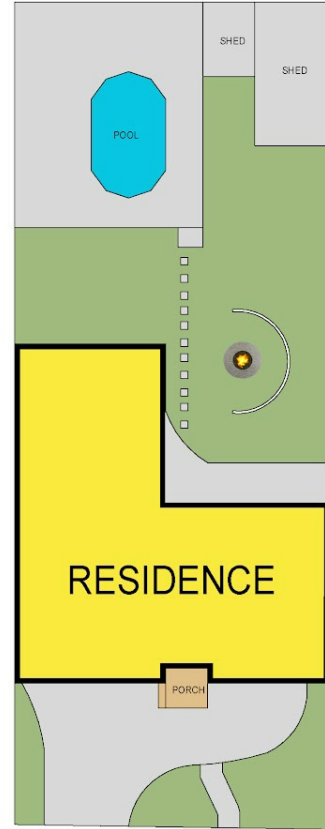


**Brad Barker**  
**0413875833**  
bradbarker@atrealty.com.au  
[www.atrealty.com.au](http://www.atrealty.com.au)



GROUND FLOOR

FISRT FLOOR



100 Wandewoi Avenue  
San Remo

Total Internal Floor Area: 214 sqm

Scale in metres indicative only. Dimensions are approximate. All information contained herein is gathered from sources we believe to be reliable. However we cannot guarantee its accuracy and interested persons should rely on their own enquiries



Disclaimer: Please note this floor plan is for marketing purposes and is to be used as a guide only. All dimensions are estimates only and may not be exact measurements.