



# FOR SALE

## SERENE & SECURE IN A PRIVATE POCKET

Peacefully nestled within a quiet cul-de-sac, this spacious family home offers 4 great-sized bedrooms, multiple living/dining areas and easy access to all local amenities.

Join a secure family-friendly pocket right next to Hayes Park Public School and the fantastic Lakeside Leisure Centre, perfectly positioned to benefit first home buyers, growing families or savvy investors alike.

Huge formal carpeted lounge and dining areas make an excellent first impression as you enter this comfortable home, flowing ahead to the additional spacious meals zone and expansive family area each with quality tiling throughout.

The kitchen makes a wonderful central hub of the home with its wraparound benchtop and viewing window to the family area, serving well with its stainless steel appliances including a gas cooktop and dishwasher.

All 4 sizeable bedrooms are carpeted, with built-in robes to 3 while the master boasts a walk-in robe and personal ensuite. The remaining bedrooms are all handily placed near the full family bathroom and separate laundry room.

Completing the block are low-maintenance gardens at the front and rear, as well as the remote-control double garage providing off-street parking and internal access to the home.

It's just minutes to further local schools, parks and playgrounds, as well as Dapto town centre for the train station and major shops and supermarkets of Dapto Mall. The sparkling waters of Lake Illawarra and nearby coastal beaches are a short drive away, as is Wollongong CBD for further amenities.

All the space and serenity you need are right here, so call Peter on 0401 394 394 to register your interest now!

### Features

- Reverse Cycle Heating/Cooling
- Gated Side Access

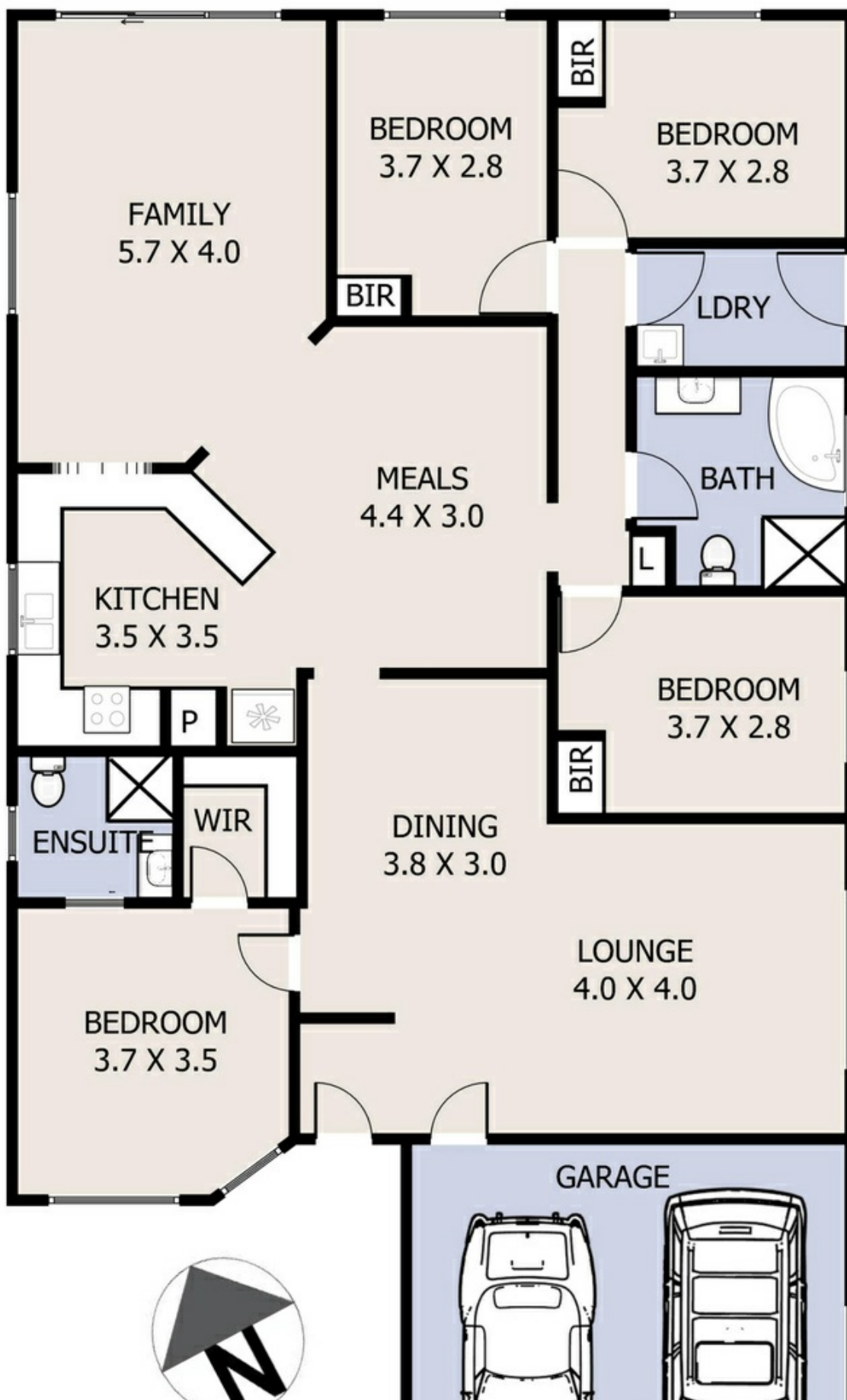
4 BED | 2 BATH | 2 CAR

PRICE:  
\$800,000

OPEN FOR INSPECTION:  
N/A



**Peter Bullman**  
**0401394394**  
peterb@atrealty.com.au  
[www.atrealty.com.au](http://www.atrealty.com.au)



Disclaimer: Please note this floor plan is for marketing purposes and is to be used as a guide only. All dimensions are estimates only and may not be exact measurements.

**Upside**

Peter Bullman  
0401394394  
peterb@atrealty.com.au  
[www.atrealty.com.au](http://www.atrealty.com.au)

**@realty**