



SOLD

TAMBORINE MOUNTAIN'S HIDDEN GEM

Look no further if you are in the market for a project in a premier location - this has to be on your "must see" list.

Located a short walk to St Bernards school, pre-school, Hotel and cafe.

With total privacy, your own rainforest and water supply this property has a lot to offer.

- * Brick and tile single level home
- * Three generous bedrooms all with built in wardrobes
- * Master bedroom with huge double wardrobe and ensuite (ensuite will need renovating)
- * Country sized kitchen
- * Multiple living/office areas
- * Bar with servery
- * Formal and informal lounge and dining
- * North facing to catch the very best of the sunlight
- * Large outdoor living area
- * Double garage with internal access
- * Two large concrete water tanks as well as a bore
- * Corner block - prime location

This property will surprise and delight with lots of hidden features.

Don't miss the opportunity to at least view this very desirable location - call Cherie or Trish today.

(We are happy to offer a private inspection if that works better for you)

Disclaimer.

The information above is provided with the intent to furnish users with general information regarding the property listed. The information contained is provided as general guidance and is not intended to replace or serve as substitute for any advisory, or other professional advice, consultation or service. You should consult with appropriate legal professionals or other professional advisors for advice concerning specific legal and financial matters before making any decisions.

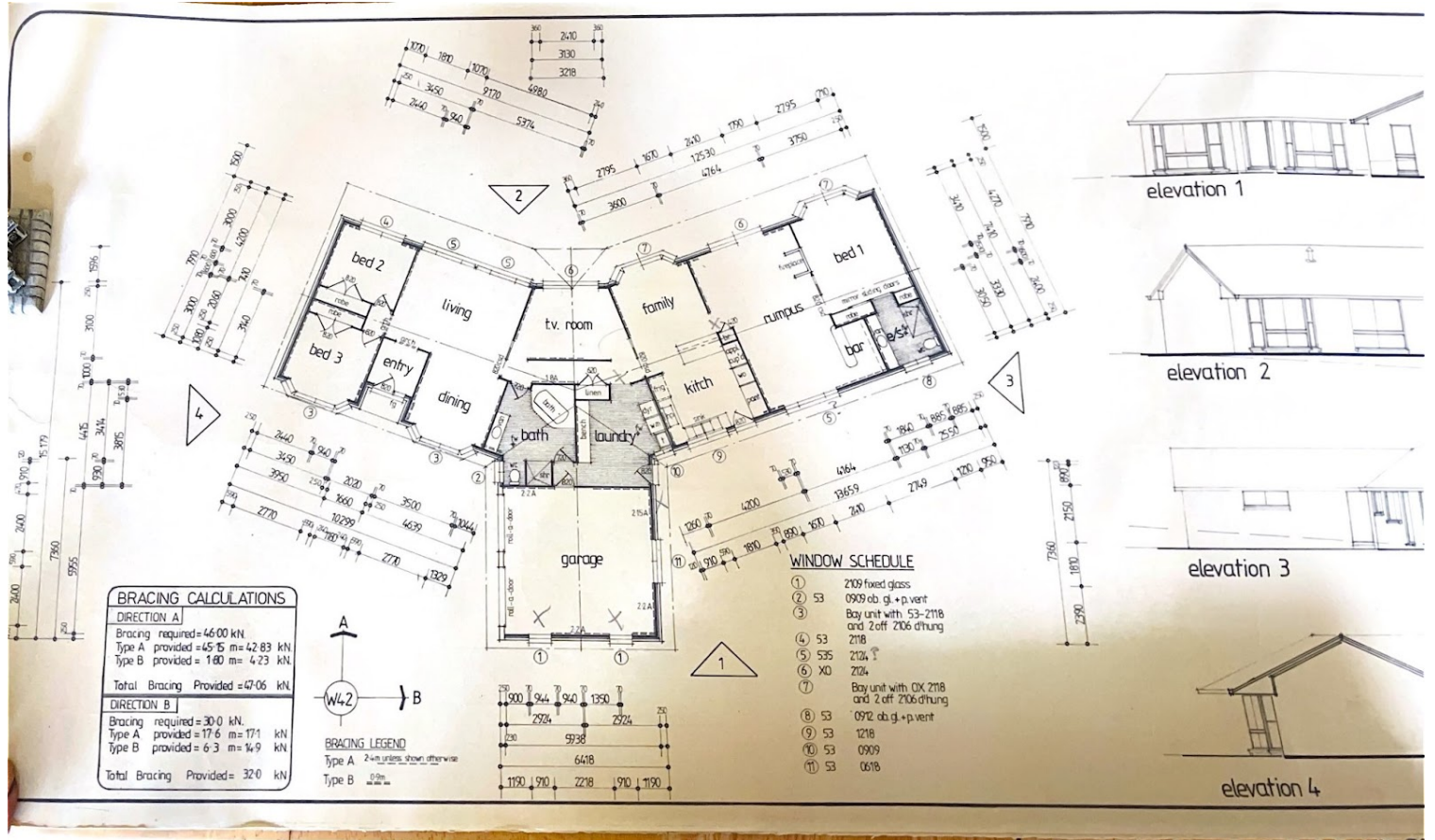
3 BED | 2 BATH | 2 CAR

PRICE:
\$1,015,000

OPEN FOR INSPECTION:
N/A



Cherie Todd
0411466442
cherie.todd@atrealty.com.au
www.atrealty.com.au



Disclaimer: Please note this floor plan is for marketing purposes and is to be used as a guide only. All dimensions are estimates only and may not be exact measurements.