



**SOLD**

## STUNNING WATERFRONT GEM

Perfect for a couple or family, with exquisite marina views and just a walk away from the CBD. Homes with a location like this and offering so much space in a well laid out floor plan, do not come around twice. Beautifully maintained throughout, presents immaculately. You will feel like you are on a holiday living here.

### Features:

- Private Marina setting
- Large courtyard with inground spa
- Contemporary design, small complex of 6 only
- Open plan living on ground level flowing out to waterside deck & spa
- Spacious second living area on first floor
- Modern finishes throughout giving a polished appeal
- Chefs kitchen with granite benchtops, stainless appliances, Neff oven & gas cooktop
- Master bedroom with walk in robe, ensuite and balcony with water views
- Balcony on first floor with amazing views
- Secure complex, double lock up garage with storeroom
- Huge land component with 358m<sup>2</sup> on title
- Bring your pets

From the moment you set foot in this gorgeous home, you will be in awe of the incredible views accompanied by the most beautiful finishes. The intelligent floor plan and positioning on the block means the maximum amount of indoor and outdoor living space is utilized and flows perfectly.

The living areas are generous on both floors, louvered throughout for sensational cool breezes straight off the water and mesmerizing water views from every room.

The kitchen is galley style with gleaming benchtops, stainless steel appliances including a 4 burner gas cooktop, dishwasher plus abundant storage with a corner pantry. Impressive finishes throughout with soft close drawers and cupboards.

The bedrooms are a generous size and the master is particularly spacious with incredible storage and a beautifully remodelled ensuite plus direct access to the balcony overlooking the

**3 BED | 2 BATH | 2 CAR**

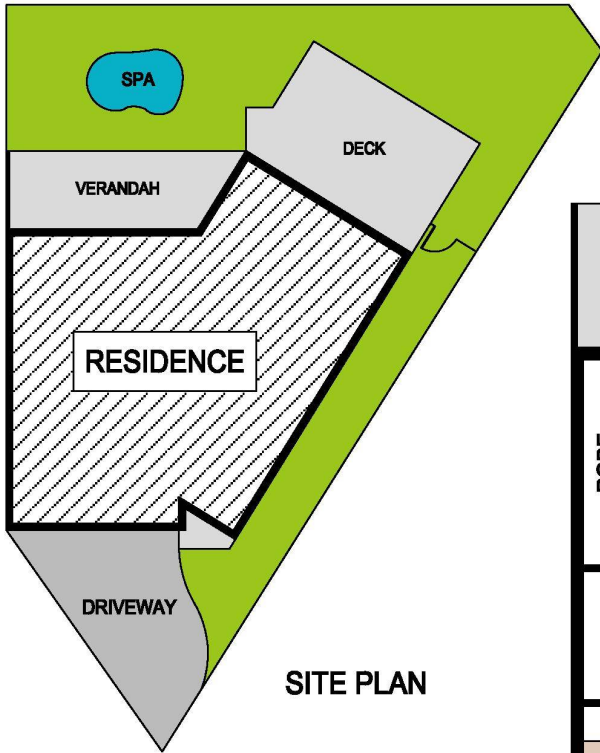
**PRICE:**  
**\$1,000,000**

**OPEN FOR INSPECTION:**  
**N/A**

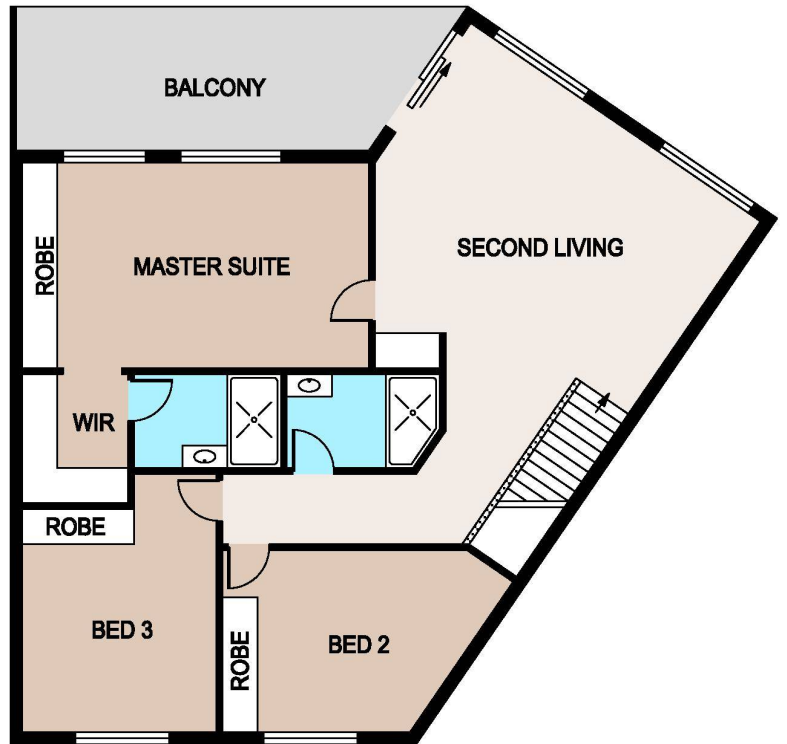


**Kerri-Ann Laurence**  
**0411889778**

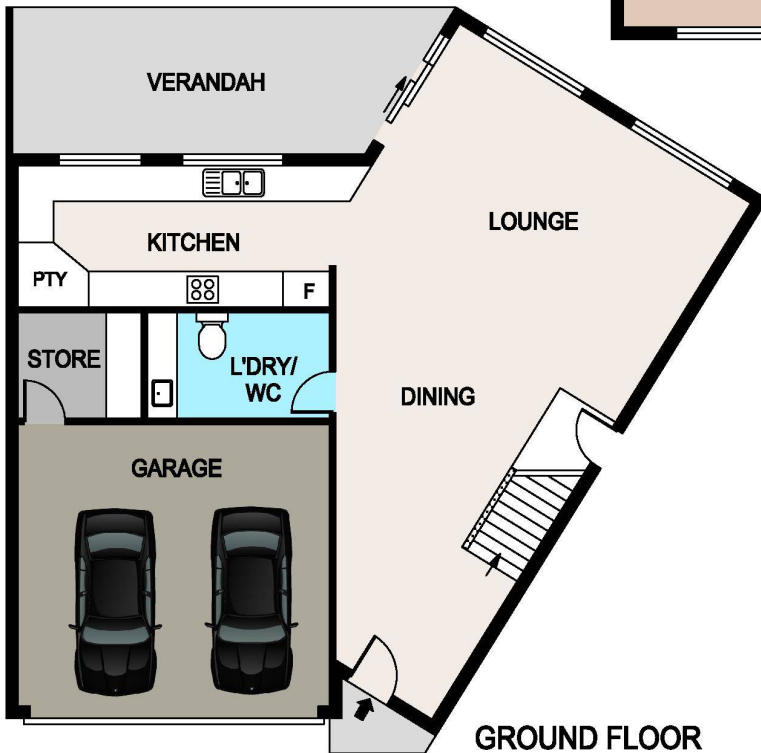
[ka@laurencerealestate.com.au](mailto:ka@laurencerealestate.com.au)  
[www.laurencerealestate.com.au](http://www.laurencerealestate.com.au)



SITE PLAN



FIRST FLOOR



GROUND FLOOR

Disclaimer: Please note this floor plan is for marketing purposes and is to be used as a guide only. All dimensions are estimates only and may not be exact measurements.

DISCLAIMER

PLANS SHOWN ARE FOR MARKETING PURPOSES ONLY. ALL DIMENSIONS ARE APPROXIMATE AND NOT TO SCALE. THEY ARE SUBJECT TO ERRORS AND INACCURACIES AND NO LIABILITY WILL BE ACCEPTED. INTERESTED PARTIES SHOULD MAKE THEIR OWN INQUIRES.

Kerwin Laurence  
0411889778

ka@laurencerealestate.com.au

www.laurencerealestate.com.au

