



SOLD

MODERN LIVING WITH ENORMOUS LAND CONTENT

Walk to spectacular Mindil Beach from this spacious ground level contemporary home with a huge wrap around courtyard that's a rare find in this prime central location. 494m² on Title "a" a Very rare find indeed.

Ground level "a" no stairs to climb. This three bedroom apartment captures cooling sea breezes , plus heaps of outdoor lawn space to enjoy. It is set in a quality modern complex opposite parklands and moments to Cullen Bay, the casino, golf course and the CBD.

- Living/dining area opens to alfresco patio and huge wrap around lawn
- Abundant established tropical gardens
- Striking kitchen features premium cabinetry and white stone bench tops
- Main bathroom with frameless shower over bath and large vanity
- Master bedroom opens onto an alfresco patio and features an ensuite
- New luxury ensuite with corner vanity and over-sized glass shower
- Internal laundry facilities plus a long built-in linen cupboard
- Parking for FOUR cars provided in quality modern parkside complex
- Secure complex with intercom access

Bring your boat, caravan AND your pets.

There's PLENTY of space inside and out for the active young family in this distinctive three bedroom apartment, or first-home buyers, couples, or retirees treat yourself to a vibrant executive lifestyle in this impressive ground-level apartment "a" no stairs to climb.

Enter directly into the open-plan living/dining area that captures abundant natural light and connects to an alfresco patio in the huge backyard-style courtyard with an expansive wrap-around lawn, established gardens and a storage shed.

Back inside, the stylishly renovated kitchen adjoins the main living/dining space with a long breakfast bar, and features stunning white stone bench tops, premium modern cabinetry and quality appliances.

3 BED | 2 BATH | 4 CAR

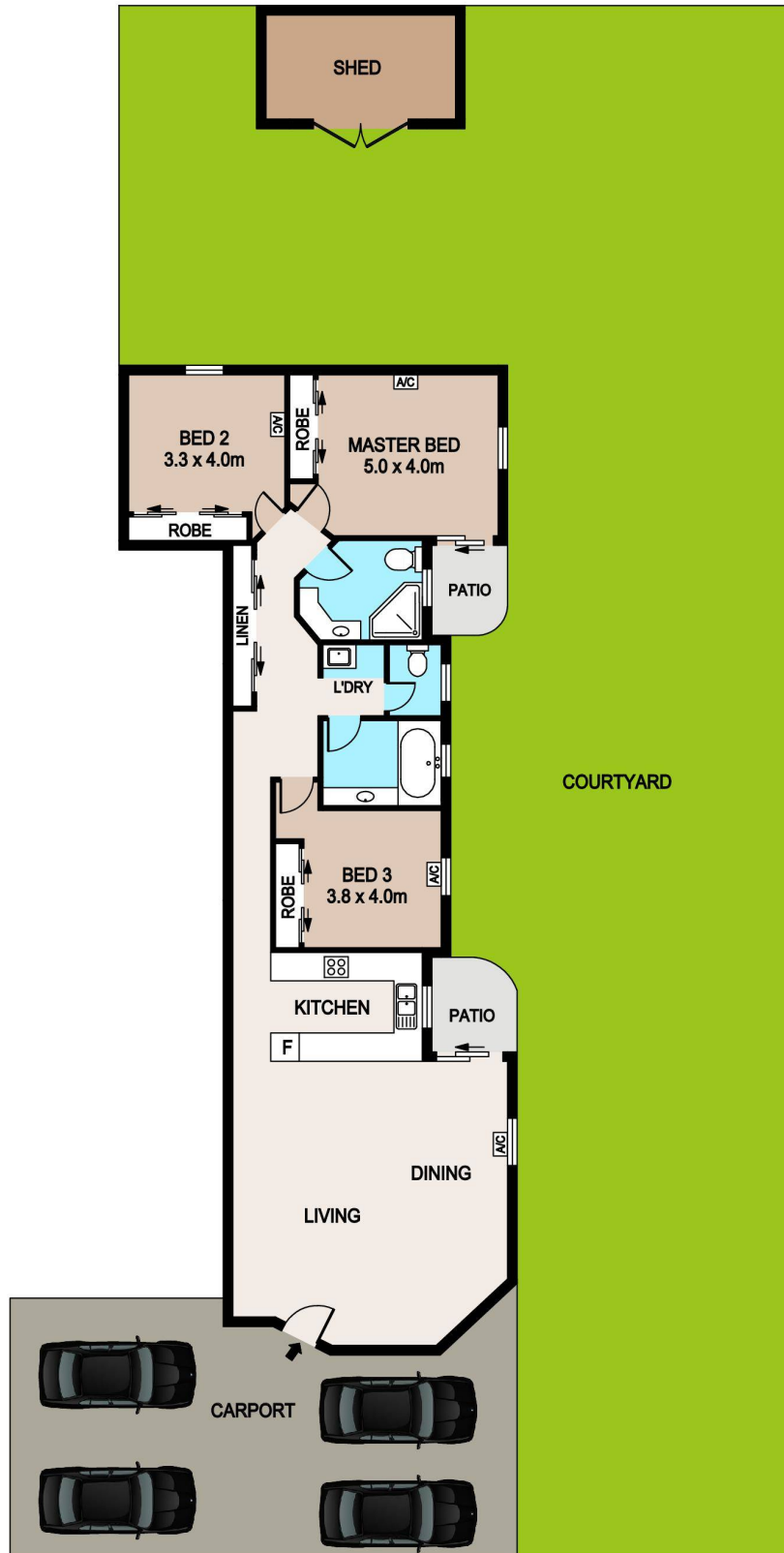
PRICE:
\$600,000

OPEN FOR INSPECTION:
N/A



Kerri-Ann Laurence
0411889778

ka@laurencerealestate.com.au
www.laurencerealestate.com.au



Disclaimer: Please note this floor plan is for marketing purposes and is to be used as a guide only. All dimensions are estimates only and may not be exact measurements.

DISCLAIMER

PLANS SHOWN ARE FOR MARKETING PURPOSES ONLY, ALL DIMENSIONS ARE APPROXIMATE AND NOT TO SCALE. THEY ARE SUBJECT TO ERRORS AND INACCURACIES AND NO LIABILITY WILL BE ACCEPTED. INTERESTED PARTIES SHOULD MAKE THEIR OWN INQUIRES.

Kerryn & Laurence
0411889778

ka@laurencerealestate.com.au
www.laurencerealestate.com.au

