



**SOLD**

## FRESHWATER POINT - 3 BEDROOM APARTMENT, 2 BATHROOM, 2 CAR SPACE WITH RIVER VIEWS!

FRESHWATER POINT - 3 BEDROOM APARTMENT, 2 BATHROOM, 2 CAR SPACE WITH RIVER VIEWS!

This is a rare opportunity to secure an apartment within the tightly held Points Residences at Freshwater Point. Located on the river at Broadbeach Waters and only a short stroll to the Broadbeach shopping & café precinct, the beach, light rail and the Star Casino. Residential only and boasting a spacious open plan design with floor to ceiling glass and river views that will never be built out - stunning river views by day and amazing city lights at night!

This is without a doubt one of the absolute best lifestyle apartments in the Broadbeach area combining all of the attributes that you'll ever need in one of the few residential only buildings in the area. The Point Residences has its own secure gated car park and secure entry into the building.

Property Features:-

- Three bedrooms including a large master opening onto the balcony
- Generous light filled open plan lounge, dining room & kitchen
- Large entertainer's kitchen with quality appliances & an abundance of storage
- Master bedroom has a huge ensuite plus loads of wardrobe space
- Bedroom 2 & 3 both have good size built in robes & well appointed second bathroom
- Ducted Air conditioning & ceiling fans throughout
- 2 side by side secure car spaces
- 1 large storage cage
- Residential Only & very secure
- Body Corporate only \$144 per week
- Pet friendly
- Lovely cafe on the premises

Five star facilities include:- Two swimming pools, heated spa, sauna, steam room, gymnasium, large BBQ area & poolside cafe

- Access to walking and bike paths and surrounding parklands and playgrounds

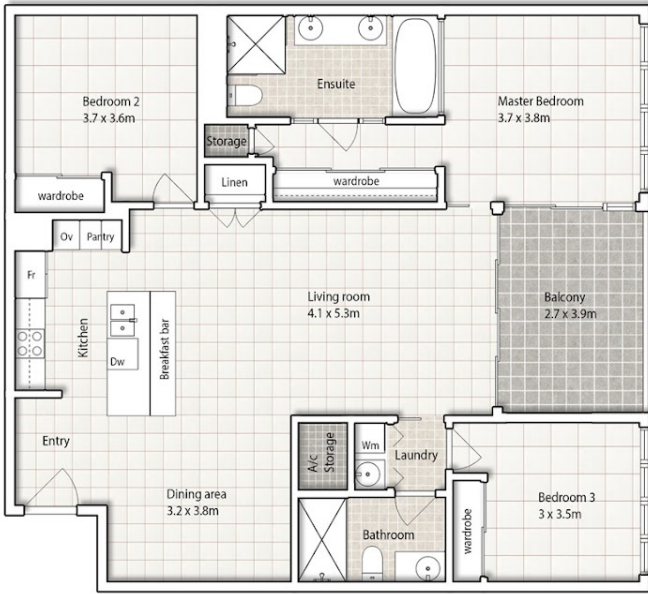
**3 BED | 2 BATH | 2 CAR**

**PRICE:**  
\$1,200,000

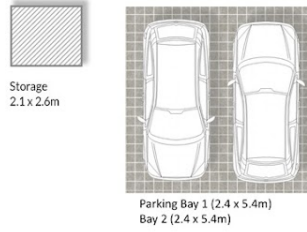
**OPEN FOR INSPECTION:**  
N/A



**Janet Harris**  
**0404482240**  
janetharris@atrealty.com.au  
[www.atrealty.com.au](http://www.atrealty.com.au)



● Floor Plan



● Car Space (Not Shown in Position)



● Location Map

**Freshwater Point Residence**  
**1504/33 T E PETERS DRIVE**  
 ● Broadbeach Waters

INTERNAL AREA : 129m<sup>2</sup>  
 BALCONY : 11m<sup>2</sup>  
 TOTAL AREA : 140m<sup>2</sup>  
 CARSPACES AND STORE : 31m<sup>2</sup>



**JANET HARRIS**  
 0404 482 240

BIANCO  
 DESIGN CO.

Whilst Every effort has been undertaken for 100% accuracy, plans should not be relied on solely. Floor plan is not to scale. Measurements are in meters.

Disclaimer: Please note this floor plan is for marketing purposes and is to be used as a guide only. All dimensions are estimates only and may not be exact measurements.

**Janet Harris**  
 0404482240  
 janetharris@atrealty.com.au  
 www.atrealty.com.au

