



**SOLD**

## STYLISH, MODERN APARTMENT WITH SUPERB ONSITE FACILITIES

Modern and spacious, this bright two-bedroom apartment creates a stylish base convenient to surrounding amenities and just a short drive from central Palmerston. Opening out to a lovely entertainer's balcony, the open-plan living area offers plentiful space for relaxing and dining, centred by a gorgeous kitchen. Two sleek bathrooms and an internal laundry complete the interior, while the complex provides access to a pool, playground and secure parking.

- Modern two-bedroom apartment situated on first floor of quality complex
- Bright and breezy interior, finished to a high standard throughout
- Living and dining offered within flow-through open-plan concept
- Stylish kitchen flaunts dark cabinetry, stone benchtops and bold backsplash
- Wonderful balcony creates great alfresco space with pleasant neighbourhood outlook
- Airy master offers balcony access, built-in robe and smart ensuite
- Generously proportioned second bedroom also features built-in robe
- Contemporary design through main bathroom, separate internal laundry
- Fully tiled and air-conditioned to further enhance effortless apartment living
- Secure parking for two cars, plus access to pool, playground and BBQ facilities

Searching for effortless, low maintenance living without compromising on space or style? Look no further! Offering access to excellent facilities in a great location, this modern apartment provides all you've been searching for and more.

Stepping into the apartment, you immediately notice its bright, welcoming vibe, which has been beautifully accentuated by glossy tiled floors and a contemporary neutral palette.

Ready to rent out or move in as is, the apartment impresses first with its spacious open-plan concept, which features distinct zones for dining and relaxing, centred by a fabulous kitchen.

Sure to appeal to keen cooks, the designer kitchen boasts stone benchtops offset by sleek, dark cabinetry, bold backsplash and silver accents, complemented by quality appliances and a wonderful waterfall island.

With a wall of windows providing abundant natural light, the living area opens out seamlessly to a

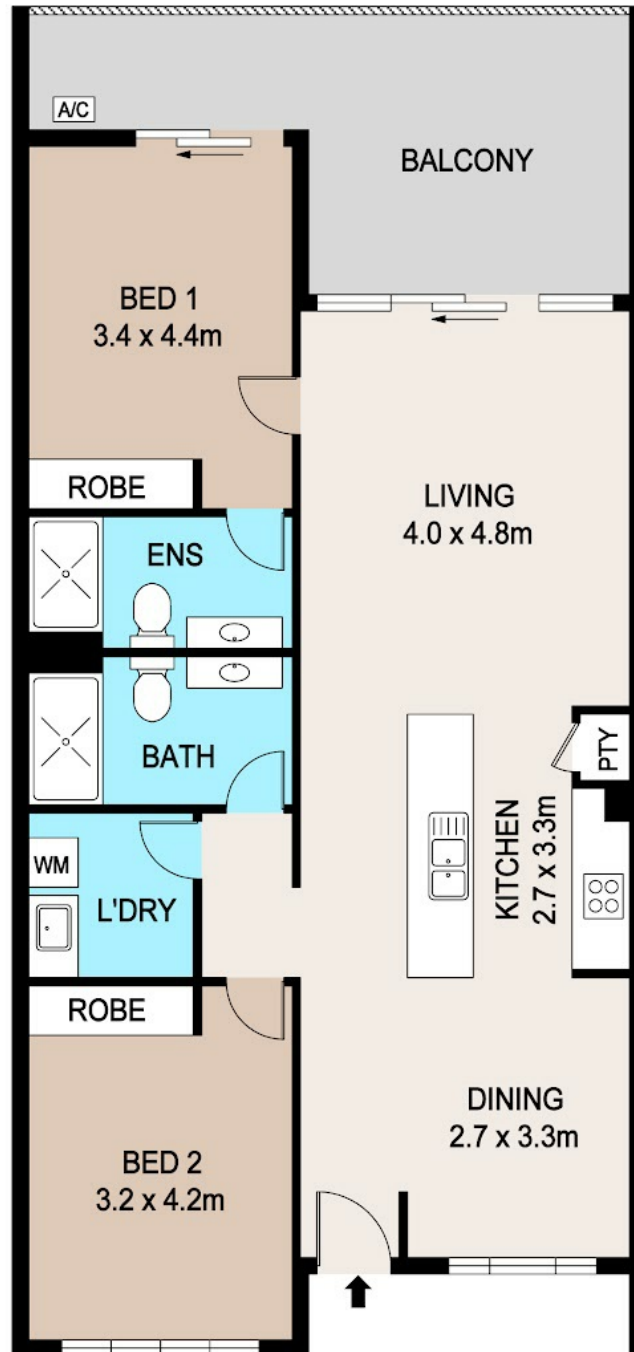
**2 BED | 2 BATH | 2 CAR**

**PRICE:**  
**\$308,000**

**OPEN FOR INSPECTION:**  
**N/A**



**Kerri-Ann Laurence**  
**0411889778**  
ka@laurencerealestate.com.au  
www.laurencerealestate.com.au



Disclaimer: Please note this floor plan is for marketing purposes and is to be used as a guide only. All dimensions are estimates only and may not be exact measurements.

DISCLAIMER

PLANS SHOWN ARE FOR MARKETING PURPOSES ONLY, ALL DIMENSIONS ARE APPROXIMATE AND NOT TO SCALE. THEY ARE SUBJECT TO ERRORS AND INACCURACIES AND NO LIABILITY WILL BE ACCEPTED. INTERESTED PARTIES SHOULD MAKE THEIR OWN INQUIRES.

**Kerryn Laurence**  
0411889778

ka@laurencerealestate.com.au  
www.laurencerealestate.com.au

