



SOLD

PRIVATE, SECLUDED HOME BACKING DIRECTLY ONTO TRANQUIL PARKLANDS!

Are you looking for a low-maintenance home that will free up your time to enjoy the things you love? Look no further than 35 Magenta Street, Wavell Heights! This beautiful low-set home is the perfect place for busy professionals, retirees, or families who want to spend less time on chores and more time on living.

With its easy-care design and convenient location, 35 Magenta Street offers the best of both worlds. The home features three generous-sized bedrooms, two with built-in robes, and a spacious study/fourth bedroom. The master bedroom overlooks the parklands, providing a tranquil oasis to escape to at the end of the day.

The home has been meticulously updated with feature timber floors throughout the living areas, plush new carpets in all the bedrooms, inside the house has been professionally painted and the kitchen has a brand-new gas stove, rangehood and a Bosch dishwasher has been recently added.

But the real highlight of this property is its location. Backing onto parkland, you'll enjoy endless hours of outdoor recreation, from walking and biking to picnicking and playing sports. You are also just minutes from local schools, shops, restaurants, and Chermshire shopping centre.

Here are just a few of the things you will love about this property:

- . Three generous sized bedrooms, two with built-in-ropes, the master bedroom overlooking the parklands.
- . Spacious study/ fourth bedroom.
- . Air- Conditioning & Fans Throughout
- . Large bathroom with a new shower installed plus a separate bath.
- . Outdoor entertaining area with direct access to the parklands via a lockable gate.
- . Generous sized sunroom/rumpus area connected to the kitchen.
- . Separate toilet and laundry.
- . Lock up car accommodation for one car, covered carport plus off-street parking for two additional vehicles.
- . Property is served by underground power.

3 BED | 1 BATH | 2 CAR

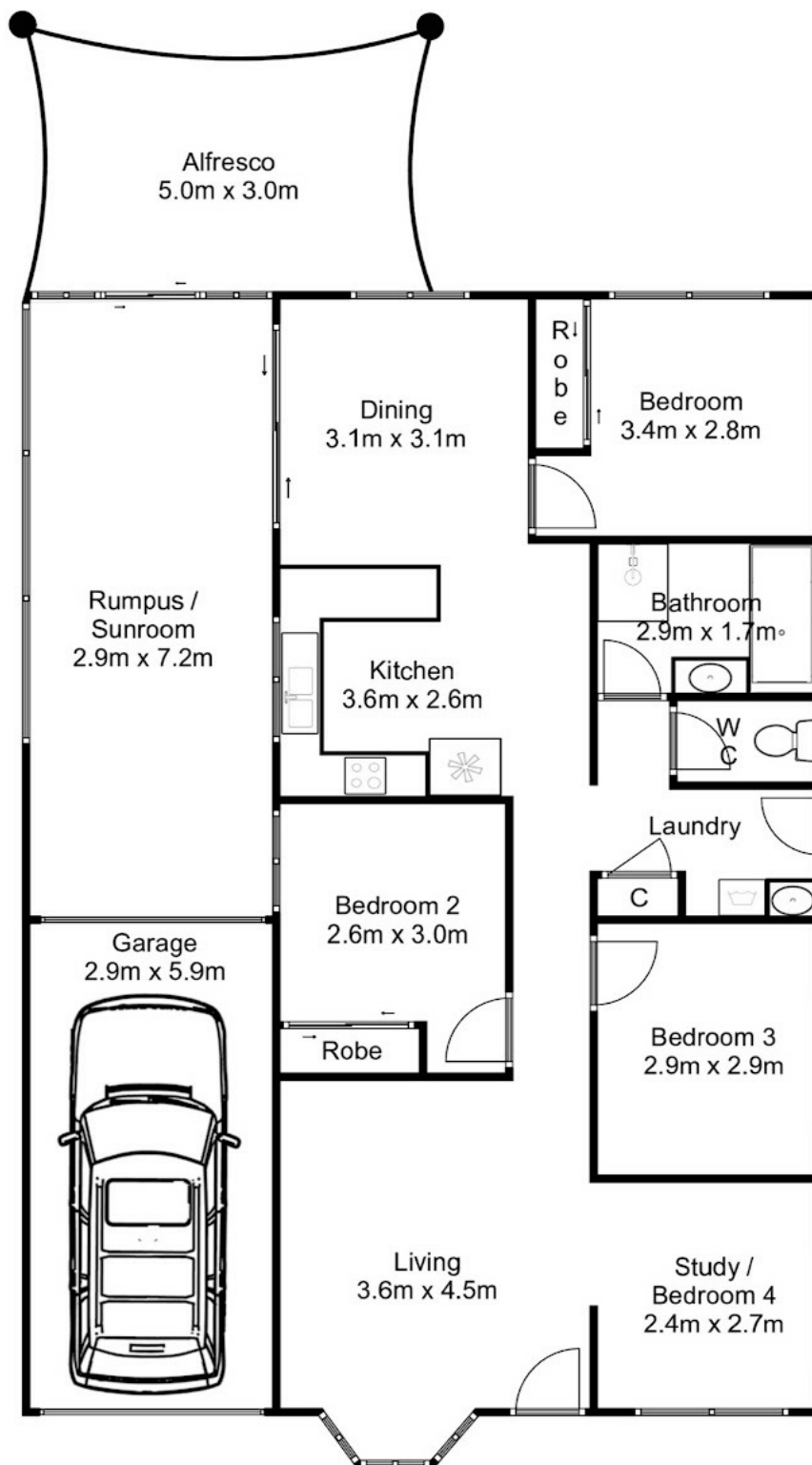
PRICE:
\$846,000

OPEN FOR INSPECTION:
N/A



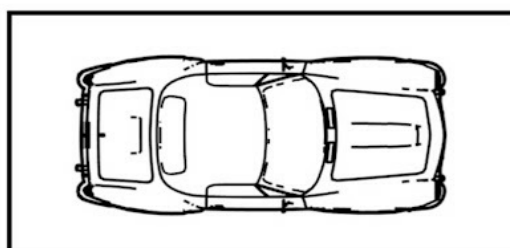
Bruce Tame
0419699349

bruce@instylerealty.com.au
www.instylerealty.com.au



**35 Magenta Street,
Wavell Heights**

Approx. Areas in m²
 Living Area - 107.9m²
 Decks - 12.4m²
 Garage / Carport - 31.2m²



Disclaimer: Please note this floor plan is for marketing purposes and is to be used as a guide only. All dimensions are estimates only and may not be exact measurements.

Whilst every attempt has been made to ensure the accuracy of this floor plan, all measurements shown or implied are approximate and no responsibility is taken for any error, or omission, nor is any warranty given. Kitchen, bathrooms, appliances, fixtures, fittings or any other items shown are representative only, and do not necessarily match what is in the property. Different levels may not align correctly. These plans are for illustrative purposes only and should be used as such. Copyright 2023. All rights reserved - www.realestatepics.com.au