



SOLD

1879M2 BLOCK + 5 BEDROOM HOME + 1 BEDROOM GRANNY FLAT + 180SQM OF SHEDS

A substantial 5 Bedroom home set on 1879m2 block, with Granny Flat, 42sqm shed, 24sqm shed, 105sqm men's shed and garden shed, plus a large inground salt water pool.

If you are seeking space for your family the main house has all you could wish for - five bedrooms with built-in wardrobes, 2 bathrooms, large lounge with separate dining and kitchen. Inground saltwater pool and large entertainment area.

Attached to the home you have a two-car lock-up garage with roller doors with drive through access to the back yard.

There is a Granny Flat/Guest Accommodation that comes complete with kitchen bench and sink, large single bedroom, shower, toilet, sitting room, laundry, private verandah and separate entrance. It adjoins a 42sqm and 24smq fully enclosed shed space with 2 x single roller doors. There is ample space for cars/trailers/boats.

Marble floors throughout the home and carpet in 4 of the 5 bedrooms. A new kitchen less than 3 years old with so much storage and bench space, gas cooking, large oven, marble benchtops and dishwasher.

The main bedroom has a large built-in wardrobe and spacious en-suite with double shower and double vanities.

The Pool Area

Enjoy the inground salt pool with wading area and centre island for the kiddies plus a BBQ area and plenty of space for lounge chairs for just relaxing.

The Entertainment Area

The entertainment area provides plenty of room for an outdoor lounge and a large dining table.

The Men's Shed

15m x 7m. Divided into 2 parts with the front section with glass sliding door and security door entry, full lined, air conditioned, vinyl timber flooring. This is a great entertainment area with

6 BED | 2 BATH | 4 CAR

PRICE:
\$750,000

OPEN FOR INSPECTION:
N/A



Fiona Green
0428875804
fionagreen@atrealty.com.au
www.atrealty.com.au



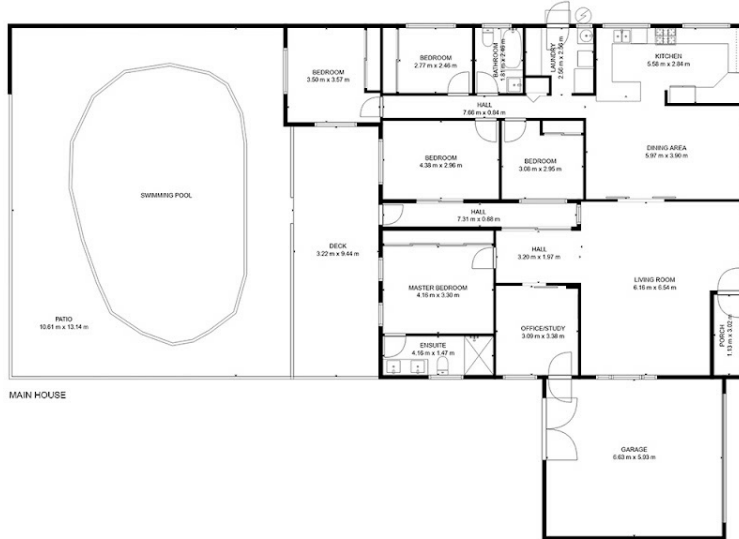
BUILDING 3 - NOT ACTUAL POSITION



NOT ACTUAL POSITION



BUILDING 2 - NOT ACTUAL POSITION



MAIN HOUSE

SIZES AND DIMENSIONS ARE APPROXIMATE. ACTUALS MAY VARY.

Disclaimer: Please note this floor plan is for marketing purposes and is to be used as a guide only. All dimensions are estimates only and may not be exact measurements.