



SOLD

FANTASTIC APARTMENT WITH FOREVER VIEWS

This immaculately maintained second-storey apartment is designed to impress from the get-go. Boasting three large bedrooms, with an elevator in place, an excellent location and one of the best views in Darwin, this property will appeal to investors and owner/occupiers alike.

- Expansive open-plan living/dining area is tiled underfoot and air-conditioned for additional comfort
- Large elevator to all levels
- Large sliding glass doors open from the living area onto the adjoining entertainer's balcony, offering exceptional panoramic views of both city and ocean
- Central galley-style kitchen with ample storage space, breakfast island, dishwasher, stainless-steel underbench oven and induction cooktop
- Three good-sized bedrooms, two with built-in wardrobes; master also has en suite with glass-screen shower
- Main bathroom also has a large glass-screen shower, with a European-style laundry in the nearby hall
- Additional features include split-system air conditioning and ceiling fans throughout, plus off-street parking for two vehicles
- External lockable storage room on ground level

Built in a convenient location with shops, restaurants and the ever-popular Parap Markets all within a short drive; location, quality and price make this an great opportunity for those looking for an exceptional apartment with incredible views.

Rental Appraisal : \$550-580 per week
DCC Rates : approx \$1200 per year
Body corporate approx \$1500 per quarter.
Sold as Vacant Possession

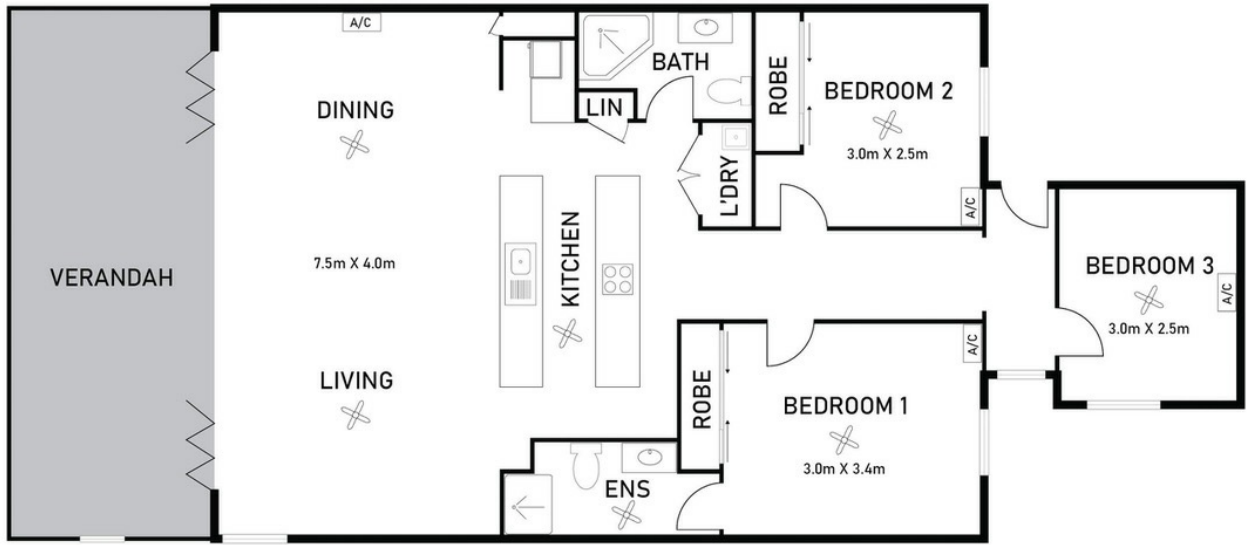
3 BED | 2 BATH | 2 CAR

PRICE:
\$450,000

OPEN FOR INSPECTION:
N/A



Nicole Wheeler
0417508800
nicolewheeler@atrealty.com.au
www.atrealty.com.au



Scale in meters. Indicative only. Dimensions are approximately. All information contained here in is gathered from source we believe to be reliable. However we cannot guarantee its accuracy and interested persons should rely on their own enquiries

9/7 Brewrey Place Woolner

Disclaimer: Please note this floor plan is for marketing purposes and is to be used as a guide only. All dimensions are estimates only and may not be exact measurements.