



SOLD

ESCAPE CITY LIFE WITH THIS 3 BEDROOM HOUSE IN KIPPA-RING

Welcome to this low set three-bedroom home located in Kippa-Ring. This house is perfect for that growing family or those looking for a home to call their own, also for all you investors out there here is one that is a must for viewing. Offering 608 square meters of land, this property provides plenty of space for outdoor activities and entertaining.

Here are just some of the features of this quality home.

- . 3 Generous size bedrooms with built-ins
- . 1 bathroom with a second toilet
- . Spacious lounge room
- . Separate dining room
- . Modern kitchen
- . Tiled throughout
- . Air conditioning
- . Fans throughout
- . Undercover entertainment area
- . Solar Panels
- . Water tank
- . 9 x 6 Shed
- . Lock up Garage

You will love cooking and entertaining in the spacious kitchen, which is complete with sleek modern appliances and plenty of counter and storage space. The generous living area is the perfect place to relax and unwind after a long day, and it offers plenty of natural light and an airy feel. Massive entertainment area gives you ample room to entertain or just enjoy after a hard day's work.

This property is situated in a highly sought-after neighbourhood and is close to all amenities including the Kippa Ring shopping centre, the Redcliffe Leagues Club, local shops, cafes, and restaurants are within easy reach, and there are several schools and parks in the area. It is also well connected, with easy access to public transport and major highways.

3 BED | 1 BATH | 1 CAR

PRICE:
\$765,000

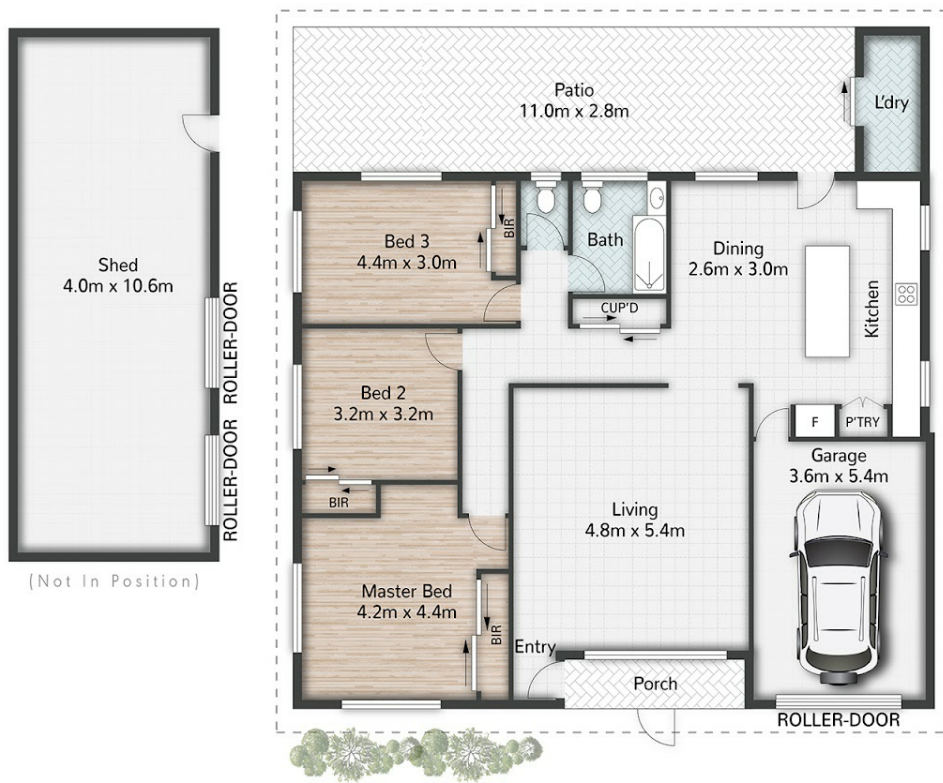
OPEN FOR INSPECTION:
N/A



Errol Reibelt
0415812557

errol.reibelt@atrealty.com.au

www.atrealty.com.au



31 Bianco Street **KIPPA-RING**

3 | 1 | 1 | 167m² | 608m²

All dimensions are approximate; they are subject to errors and inaccuracies and no liability will be accepted. Plans are shown for marketing purposes only.

Disclaimer: Please note this floor plan is for marketing purposes and is to be used as a guide only. All dimensions are estimates only and may not be exact measurements.