

SOLD

**"YOUR DREAM HOME IN DURACK AWAITS!
SPACIOUS 4 BED, 2 BATH, POOL, OUTDOOR
ENTERTAINMENT AREA, AND ECO-FRIENDLY
FEATURES. DON'T MISS OUT!"**

4 BED | 2 BATH | 2 CAR

**PRICE:
\$672,500**

**OPEN FOR INSPECTION:
N/A**

Poolside parties at your place! Located in the picturesque suburban setting of Durack Heights, this family friendly home is perfect for the savvy home maker and the investors alike. Nestled on a corner allotment with wrap around frontages, this home has dual garage parking with the laundry amenities hosted within plus room to store the bikes. Double opening doors lead through to the formal entryway for the home with a front facing 3rd bedroom that has banks of louvered windows to let in the natural light and a built in robe as well. Further into the home is the generous open plan living, dining and kitchen areas with tiled flooring underfoot and A/C as standard. Double opening sliding doors showcase the verandah and poolside entertaining areas with some easy care gardens and lawns around the home. Within the backyard is a striking variegated pandanus and easy care tropical gardens framing the blue depths of the in ground swimming pool.

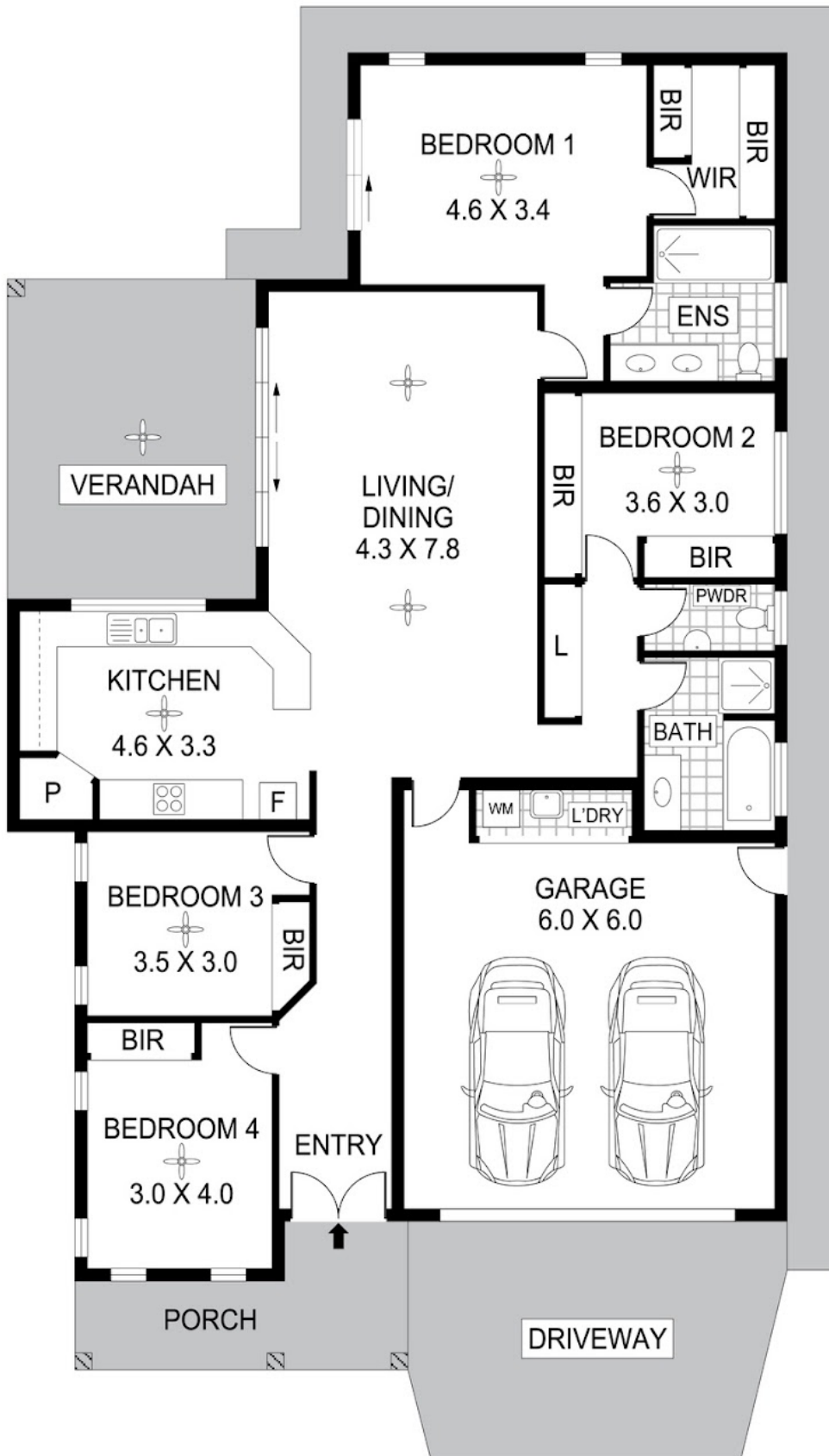
Back inside the home has a full sized executive kitchen with wrap around stone counters and a corner pantry along with overhead storage space and a servery window to the outdoor entertaining areas.

The master bedroom suite includes a walk in robe and ensuite bathroom with twin vanity and glass framed showers. The main bathroom includes a bath tub and separate shower along with a separate powder room and a wall of storage hosted adjacent for all the additional linens.

Spend your free time exploring the lakes looking for turtles or exercising along the waterways. The home is only moments from the Gateway shopping centre, Palmerston Water Park and the Palmerston CBD as well. This is affordable buying into a premier setting – now is the time to upgrade your lifestyle.



John Simpson
0416228270
johnsimpson@atrealty.com.au
www.atrealty.com.au



Disclaimer: Please note this floor plan is for marketing purposes and is to be used as a guide only. All dimensions are estimates only and may not be exact measurements.

Scale in metres. Indicative only. Dimensions are approximate. All information contained herein is gathered from sources we believe to be reliable. However we cannot guarantee its accuracy and interested persons should rely on their own enquiries

John Simpson
17 Delacruz Street Durack NT 0830

0416228270

johnsimpson@atrealty.com.au

www.atrealty.com.au

@realty