



SOLD

DREAM HOME IN EAST LISMORE: 3 BEDROOMS, 2 BATHROOMS, GARAGE & MORE!

Welcome to East Lismore, an idyllic corner of New South Wales where the friendly locals, lush landscapes and relaxed vibes make it the perfect place to call home.

This charming three-bedroom, two-bathroom house is the ideal family home, nestled on a quiet, leafy street with plenty of room to grow.

The house is warm and inviting right from the start, with a spacious front porch and a tasteful facade that hints at the character within. Entering the property through the attractive front door, you're greeted by a bright and airy living and dining area that offers plenty of space for family gatherings and entertaining.

As you move further into the home, you'll find three generously sized bedrooms, the main with built-in storage and a light-filled ensuite. The main bathroom with a deep bath is perfect for relaxing after a long day.

To the rear of the property, a large deck and outdoor entertainment area provide plenty of space to host friends and family. The house is surrounded by a large, fully-fenced garden; perfect for children and pets to safely explore. There's even a secure parking area and a separate shed for storing tools and other items.

The East Lismore lifestyle is unbeatable, with plenty of local parks, cafes and restaurants to explore. This house is an excellent investment, with no rent to pay and the potential to add value down the track. Features include High ornate ceilings, Timber floors, A/C and Fans. and solar panels, Large enclosed verandah/study, and flood-free.

Don't miss out on the opportunity to call this house your home. It won't be on the market for long, so contact me today to arrange a viewing and secure your family's future.

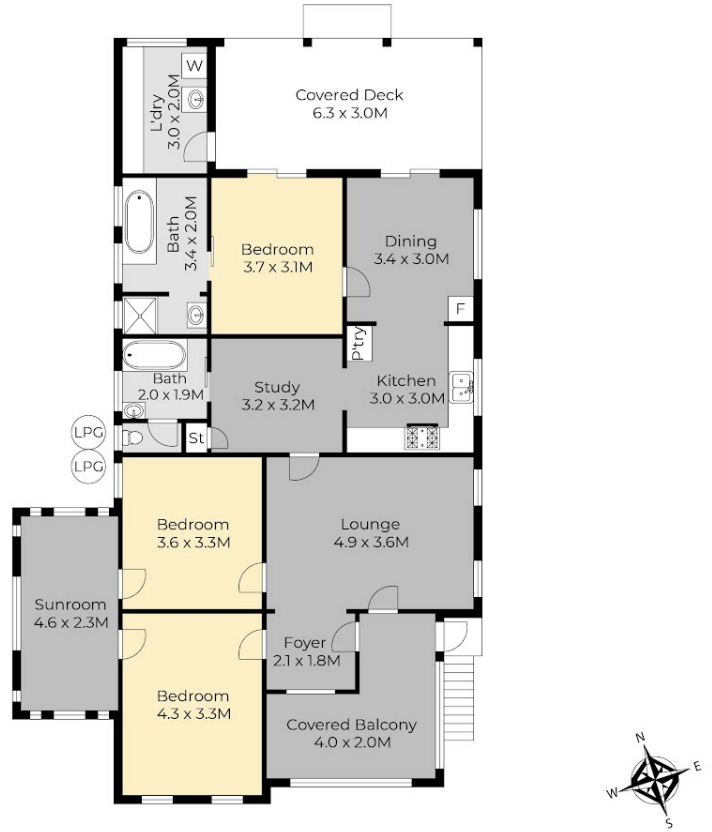
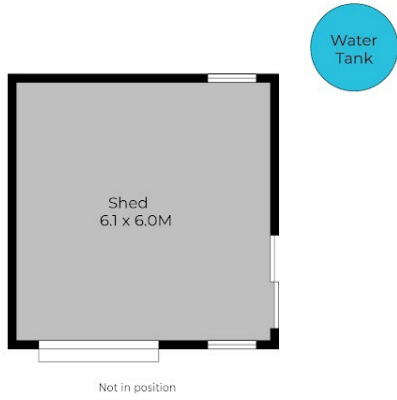
3 BED | 2 BATH | 2 CAR

PRICE:
\$625,000

OPEN FOR INSPECTION:
N/A



Peta Thompson
0403123115
petathompson@atrealty.com.au
www.atrealty.com.au



58 Spring Street, East Lismore.

Disclaimer: For illustrative purpose only Floor plan measurements, size, and scale are approximate we take no responsibility for omission and errors.



Disclaimer: Please note this floor plan is for marketing purposes and is to be used as a guide only. All dimensions are estimates only and may not be exact measurements.

Peta Thompson
0403123115
petathompson@atrealty.com.au
www.atrealty.com.au

