



SOLD

"ESCAPE TO LEWISHAM" - SUPERB OCEAN VIEWS.

Take the opportunity to escape to the serenity of Lewisham, with this charming two-bedroom home.

Situated on a generous 809 square metre block, this well maintained 2-bedroom home, with outdoor entertaining area and front deck encompassing the truly spectacular ocean vistas and breathtaking sunsets that Lewisham is renowned for, is located in a sought after area and one not to be missed.

Inside, you'll discover a home filled with warmth and character. The spacious living area is an inviting place to relax, with a large window that captures the tranquil atmosphere of the surrounding area. The kitchen is well-appointed with modern appliances and a movable island bench allowing for plenty of preparation area.

The main bedroom is light and airy, with a built-in wardrobe. The second bedroom is smaller, also with a built-in wardrobe perfect for a kid's room/ home office. The modern bathroom includes a bath/shower perfect for relaxing in after a busy day. Included also is a brand-new hot water system.

This property has a secluded outdoor entertainment area that overlooks the garden and there are two sheds, perfect for storing gardening tools and outdoor equipment. Plus, the property has broadband access for you to connect your devices. This Lewisham Gem is ready for you to move in and make it your own.

With its ample size and desirable location, it offers the perfect place to start your next chapter. It would suit first home buyers, downsizers, or investors and at this price it won't last long, so don't hesitate.

Located within 30 minutes of Hobart CBD, 10 minutes to Sorell and only minutes away from the local boat ramp and shops, this property is in close proximity of stunning beaches, coastal walks and magnificent views.

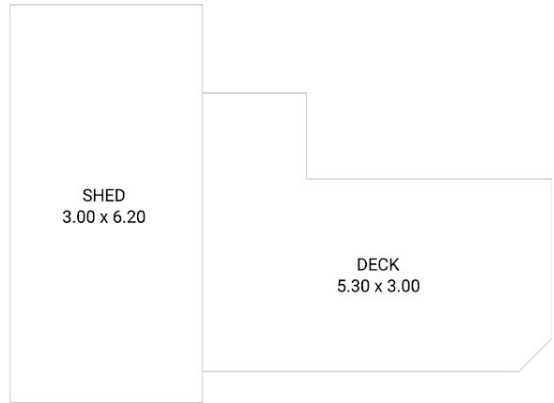
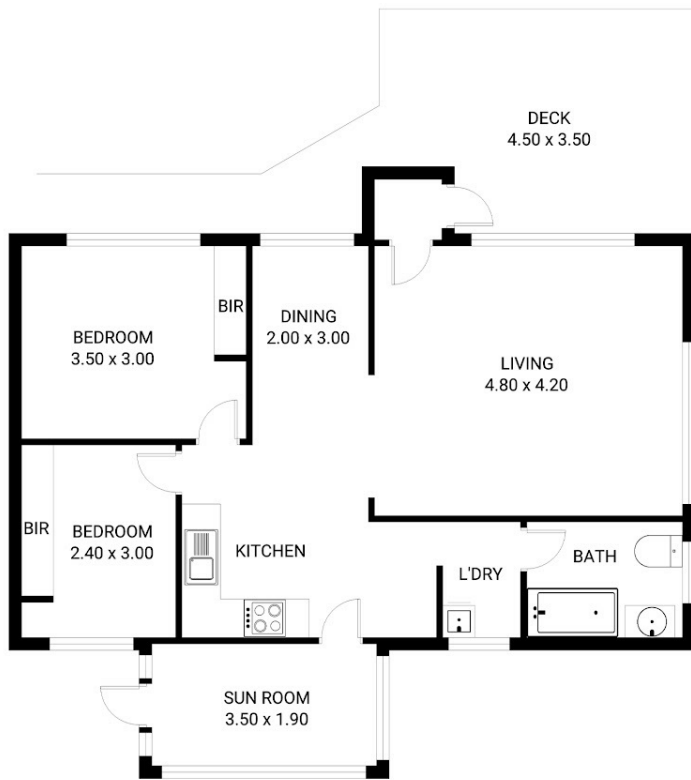
2 BED | 1 BATH | 1 CAR

PRICE:
\$515,000

OPEN FOR INSPECTION:
N/A



John Levitt
0474943030
john.levitt@atrealty.com.au
www.atrealty.com.au



24 Franklin Street, Lewisham

Total approx. floor area: 81m²

Areas and dimensions are approximate and therefore this floor plan should only be used for illustrative purposes.

Real Estate Marketing by nextcreative.com.au



Disclaimer: Please note this floor plan is for marketing purposes and is to be used as a guide only. All dimensions are estimates only and may not be exact measurements.

