



SOLD

OCEAN VIEW 1+1 UNIT WITH NORTH-FACING LUXURY IN THE HEART OF CBD

This unit must be sold, first come first serve NO HOLD, please use this link to make your offer: <https://myatrealty.com/v2/properties/79859/listings/55582/submittoform>

Welcome to your dream home in Southport Central, the heart of Gold Coast CBD. This modern apartment offers captivating ocean views, plenty of natural light, and a lifestyle that's hard to beat.

The unit is vacant, you can move in immediately.

For investors, the potential rental price is \$550/week, we have few tenants on the waiting lists. Bodycorp levy: \$79.37/week (after early payment discount)

Key Features:

- True north-facing orientation, bathing the apartment in sunlight all day.
- Floor-to-ceiling glass windows and spacious balconies for breathtaking ocean, beach, and hinterland views.
- One generous bedroom plus a study area for your convenience.
- Gourmet kitchen with an island bench, gas cooking, stainless steel appliances, and ample storage.
- Fully tiled open-plan living with ducted air conditioning for year-round comfort.
- Enjoy resort-like amenities, including three swimming pools, a year-round indoor pool, spa, sauna, gym, media room, and BBQ area.

Additional Features:

- Modern bathroom with both bath and shower.
- Pet-friendly (subject to body corporate approval).
- Private and secure basement parking (B5 447).
- Audio intercom system for added security.
- Convenient access to the light rail tram, making travel around the area a breeze.
- Close to major shopping centers, cafes, restaurants, and public transportation.

Location:

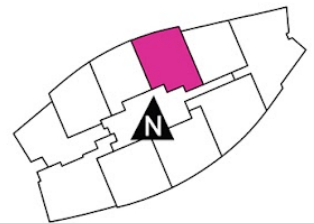
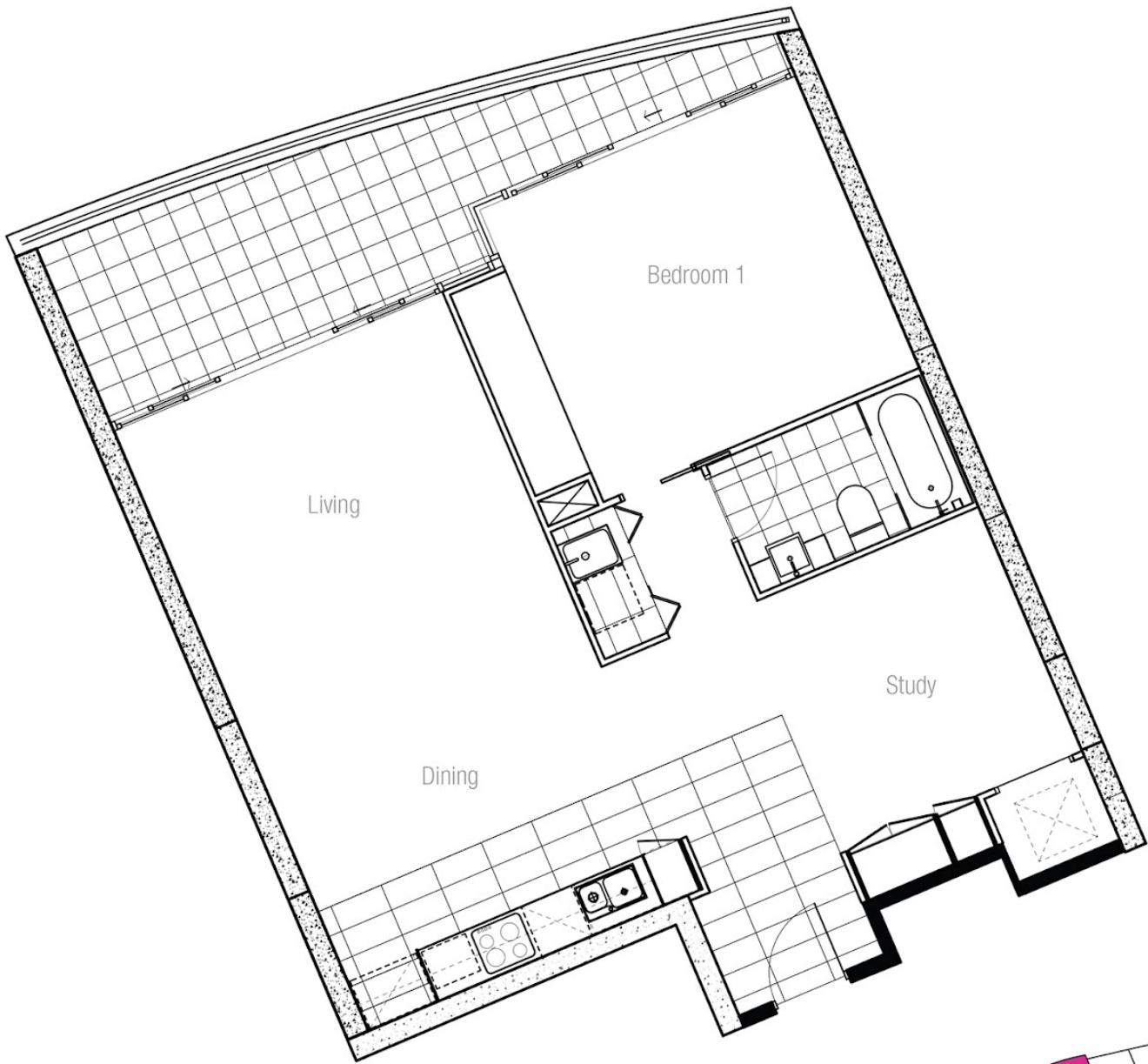
1 BED | 1 BATH | 1 CAR

PRICE:
\$525,000

OPEN FOR INSPECTION:
N/A



Feng Gao
0433998175
f.gao@atrealty.com.au
www.atrealty.com.au



LEVELS 13 - 30

1 BED + STUDY, 1 BATH

INTERNAL AREA	>	72M ²
BALCONY AREA	>	14M ²
TOTAL AREA	>	86M ²

Disclaimer: Please note this floor plan is for marketing purposes and is to be used as a guide only. All dimensions are estimates only and may not be exact measurements.