

# SOLD

## CAMBRIDGE MASTERPIECE - 782SQM NEXT TO PACIFIC WERRIBEE

Nestled in the prestigious Cambridge Estate is a residence that epitomises luxury and comfort, designed for those who appreciate bright, wide, and open spaces. This expansive home is perfect for families who seek only the best.

Upon entry, the spacious living room and study space immediately capture your attention, flowing seamlessly into an expansive open-plan kitchen and dining area. These zones form the home's core, bathed in abundant natural light and crafted for seamless interactions. A large rumpus or secondary living area extends the space, offering views of the scenic backyard. The property boasts four generously-sized bedrooms, with the master suite featuring a walk-in wardrobe and full ensuite. With ducted heating and four split systems, this home ensures a cosy living environment from the moment you move in.

Set on approximately 782sqm — a notable size for Cambridge — the property's exterior is both commanding and elegant. A beautifully landscaped front yard greets visitors, while the backyard offers both aesthetic appeal and easy maintenance. For added convenience, a remote-controlled double garage ensures vehicles are securely stored. Whether hosting a weekend barbecue or seeking a quiet outdoor moment, the spacious exteriors are ready to accommodate.

Situated just a stone's throw from Cambridge Primary School and mere steps from the Pacific Werribee Shopping Centre, all your daily needs are within easy reach. Plus, with conveniently located bus stops nearby, commuting has never been easier. Don't miss this golden opportunity —reach out now for more details!

4 BED | 2 BATH | 2 CAR

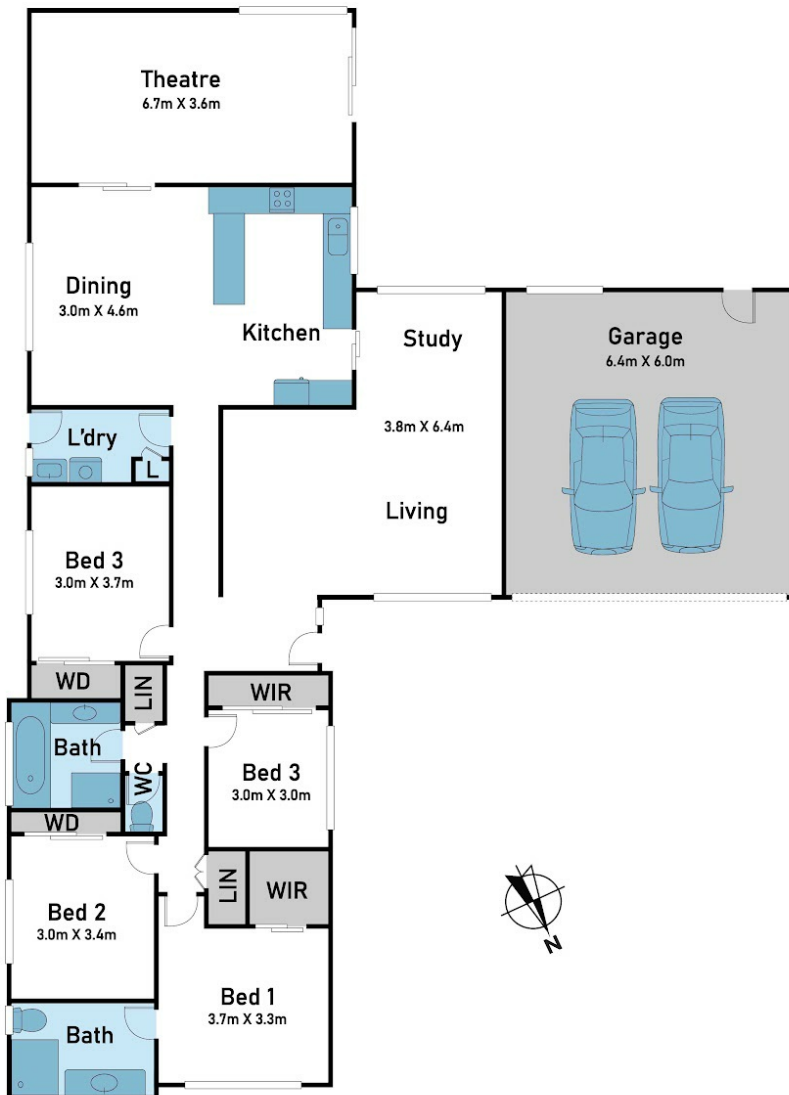
PRICE:  
\$784,000

OPEN FOR INSPECTION:  
N/A

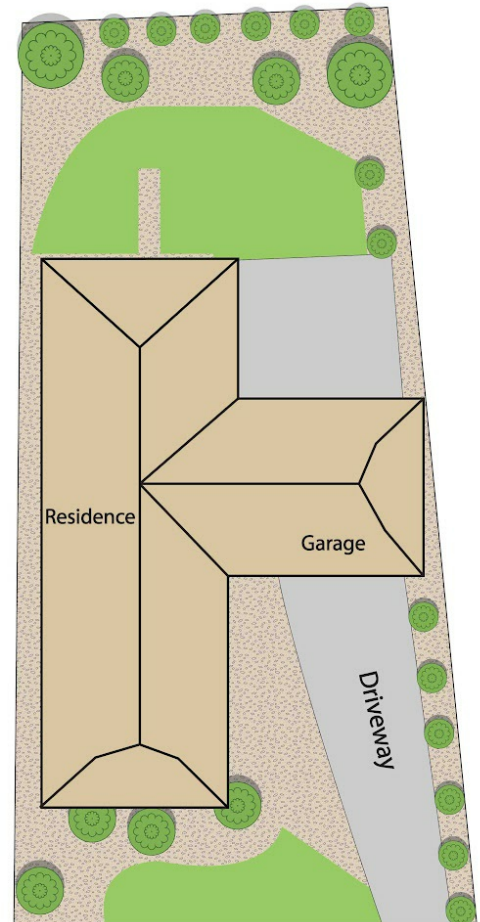


**Samuel Hogan**  
**0401315234**  
samuel@atrealty.com.au  
[www.atrealty.com.au](http://www.atrealty.com.au)

## Floor Plan



## Site Plan



@realty

## 33 Mckenzie Cres, Hoppers Crossing

\* Dimensions are approximate and for illustrative purposes only

Disclaimer: Please note this floor plan is for marketing purposes and is to be used as a guide only. All dimensions are estimates only and may not be exact measurements.