



**SOLD**

## GREAT UNIQUE 2 BEDROOM HOME ON LARGE CORNER BLOCK WITH LARGE RV PORT.

Well presented large two bedroom home with R V port and lots of extras.

Look no further, this great unique home is on a corner block and boasts 2 very large carports , two large bedrooms and a three way bathroom plus lots more including:

- + Large covered timber verandah with shade cloth blinds, east facing. This leads to a tiled open plan lounge, kitchen and dining area containing full kitchen with gas cook top and hob, air-conditioning and raked ceilings.
- + Main large bedroom has fan, air conditioning, and three way ensuite along with built-in wardrobes.
- + Second good size bedroom has fan and built-in wardrobes.
- + Second separate toilet nearby to a large separate laundry area that leads to the outside.
- + Outside there is a large rain water tank connected to the washing machine and toilet, a clothes line and a lovely lawn area.
- + A good size garden shed approx. 3 x 3.2 metre for all the tools and outside gear or workshop.
- + For the travellers there are two very large car ports for an RV, caravan or 5th Wheeler plus up to three more vehicles.

This award winning pet friendly R V park for the 'over 50s has many amenities with swimming pool, men's shed, large BBQ areas, 300 acres of land, 8 ball pool hall, a 9 hole pitch and putt golf course, art and craft room, library, games room and more!

Plus No stamp duty, no Council, sewage or rubbish collection fees.

No incoming or outgoing fees and no hidden fees. Conveyancing fees all included.

Walk to town with Centrelink, 24 hour emergency hospital, Aldi, Coles, Woolies and all other facilities available.

Inspect one of the best situated homes in the village.

Call Murgha on 0414 666 970

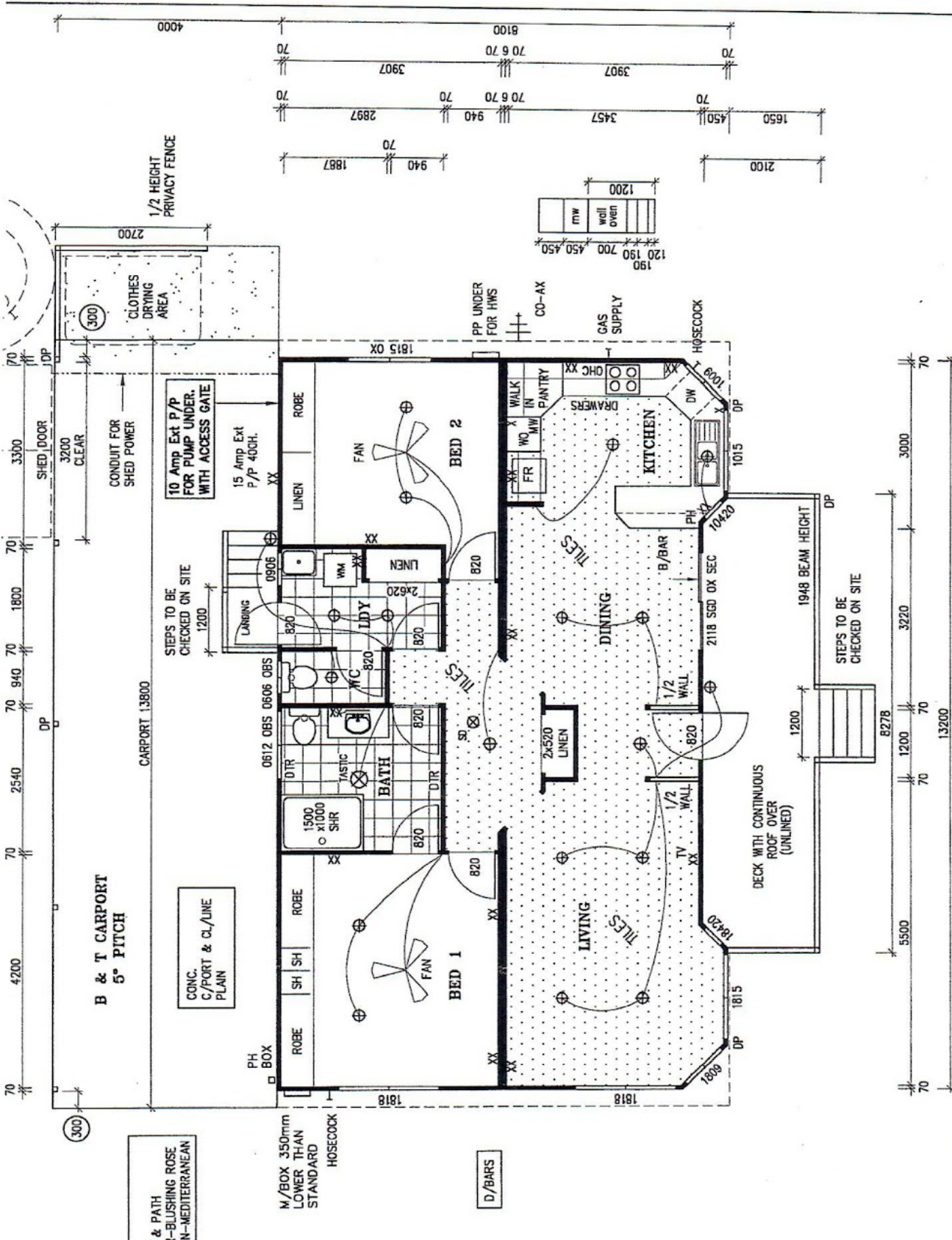
2 BED | 1 BATH | 2 CAR

PRICE:  
\$367,500

OPEN FOR INSPECTION:  
N/A



**Murgha Mack**  
**0414666970**  
murghamack@atrealty.com.au  
[www.atrealty.com.au](http://www.atrealty.com.au)



**1360**

**NORFOLK**

PROPOSED RESIDENTIAL UNIT  
FOR JONES - SITE 46  
*Site 46*  
CNCA VILLAGE  
CASINO

**SYDNEY**

DESIGN

DATE 04-04-07	PRESTIGE RANGE
2	3 4 5

Disclaimer: Please note this floor plan is for marketing purposes and is to be used as a guide only. All dimensions are estimates only and may not be exact measurements.