

# SOLD

## EXCLUSIVE 'TAPLIN PLACE', 1 BR APARTMENT, LOVELY HILLS VIEWS, METRES TO BEACH AND JETTY ROAD

Superbly located just metres to the beach and Jetty Road, this stylish apartment enjoys an abundance of natural light and a beautiful outlook over Glenelg and beyond the Adelaide Hills.

It consists of open plan living and dining room, lovely kitchen with granite bench tops, bedroom with built-in robes and views of the sunrise from the bed, sparkling white bathroom with laundry facilities and a sensational large balcony with plenty of room for casual entertaining.

There is a secure car space in the basement level of the building.

The tightly held 'Taplin Place' is a boutique sized complex and offers its owners a real community feel. It just a few steps from beautiful Glenelg Beach, Jetty Road and everything that Glenelg has to offer.

A rare opportunity! / 298528 RLA 269823

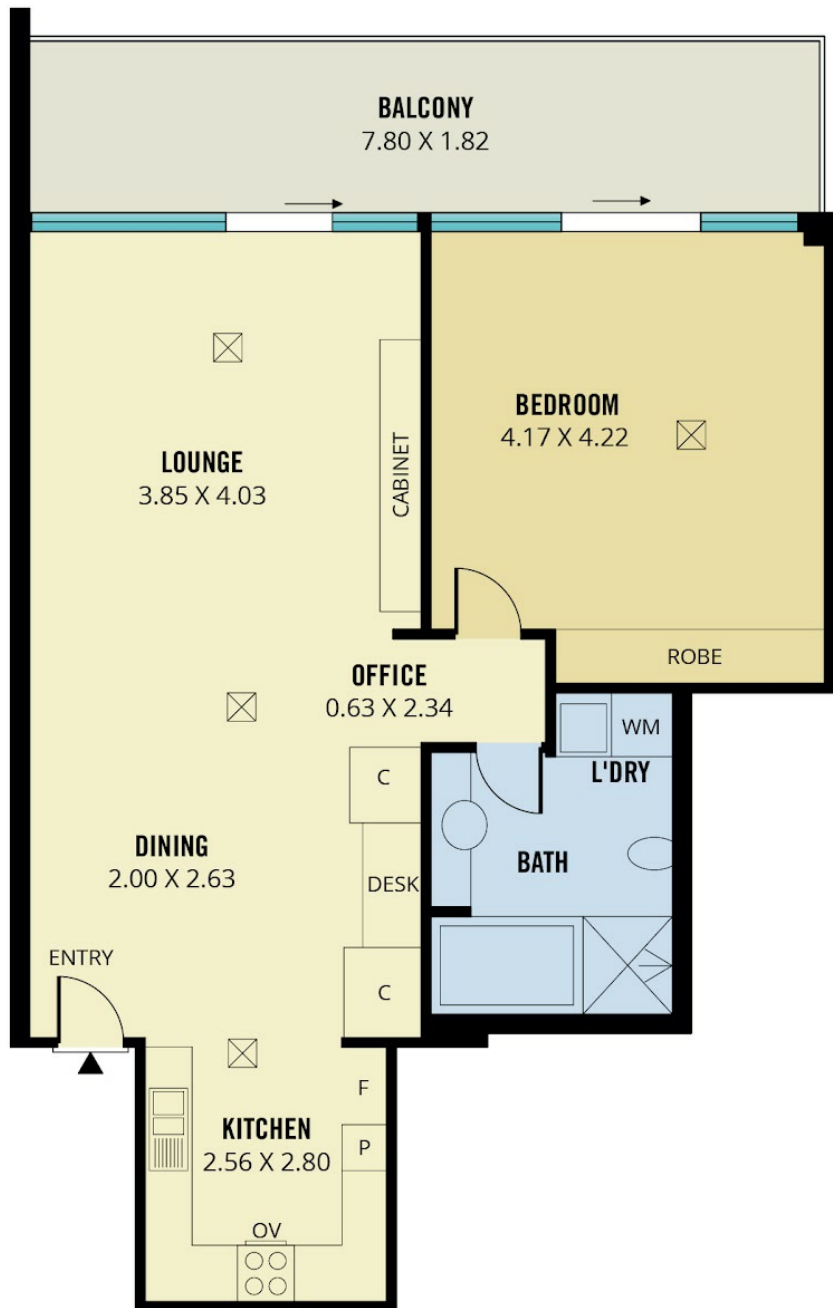
1 BED | 1 BATH | 1 CAR

PRICE:  
\$597,500

OPEN FOR INSPECTION:  
N/A



**Simon Tait**  
**0419853945**  
simon@taitre.com.au  
taitre.com.au  
RLA: 269823



Scale in metres. This drawing is for illustration purposes only. All measurements are approximate and details intended to be relied upon should be independently verified. Produced by **The Fotobase Group**

Disclaimer: Please note this floor plan is for marketing purposes and is to be used as a guide only. All dimensions are estimates only and may not be exact measurements.