

7/20 KIRKLAND AVENUE, COORPAROO, QLD, 4151



**SOLD**

## SOLD BY NADA JOVANOVIC - YOUR DREAM HOME: A GEM IN COORPAROO!

Welcome to this spacious 125m<sup>2</sup>, two-bedroom unit in the heart of Coorparoo, where the perfect blend of comfort, convenience, and style awaits you.

This solidly built property boasts an array of features that make it an irresistible opportunity.

- Two Generous Bedrooms with Built-In Robes
- Air Conditioning & Ceiling Fans
- Large Open Plan Kitchen & Living Area with Ample Cabinet Space
- Fully Renovated Bathroom & Laundry
- Separate Toilet
- Enclosed Sunroom for Your Custom Use
- Security Screens on Windows and Doors
- Blockout Blinds

This unit's top-floor position is the cherry on top, offering fantastic views of the surrounding area and capturing those refreshing cooling breezes.

Heading downstairs, you'll discover remote access car accommodation with room for two cars parked in tandem. But that's not all – there's an abundance of storage space with a large stainless steel work benchtop, giving you the organization in the garage you need.

Nestled in the heart of Coorparoo, just a stone's throw from the Brisbane CBD, you'll relish the convenience of being surrounded by top-notch cafes, fine dining, and an array of neighbourhood shopping centres. Plus, easy access to public transport, schools, universities, hospitals, and parks makes this location a true winner.

Don't let this opportunity slip through your fingers! This incredible unit is waiting for you to make it your own. For more information or to schedule a viewing, please contact Nada at 0414 984 995

Your Coorparoo dream property is just a phone call away. Act fast and seize the chance to turn this gem into your reality!

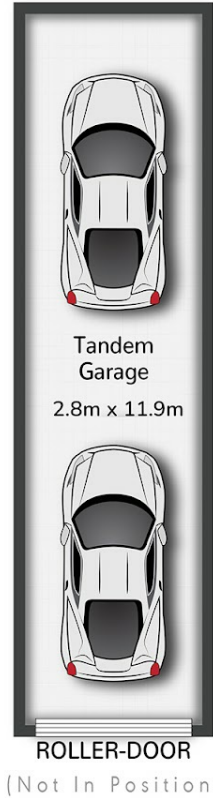
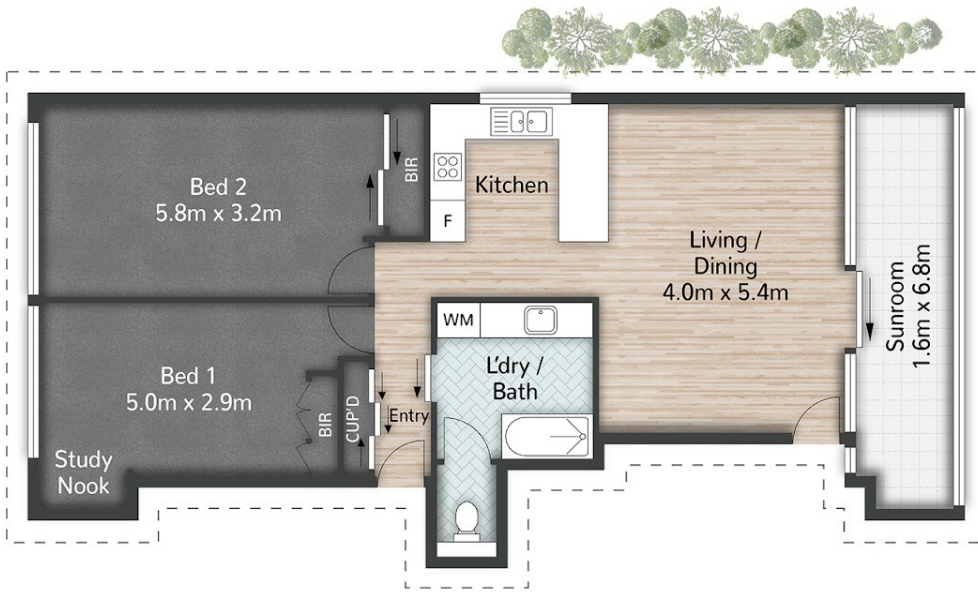
**2 BED | 1 BATH | 2 CAR**

**PRICE:**  
**\$636,000**

**OPEN FOR INSPECTION:**  
**N/A**



**Nada Jovanovic**  
**0414984995**  
nada@atrealty.com.au  
[www.atrealty.com.au](http://www.atrealty.com.au)



7/20 Kirkland Avenue COORPAROO

2 | 1 | 1 | 125m<sup>2</sup>

All dimensions are approximate; they are subject to errors and inaccuracies and no liability will be accepted. Plans are shown for marketing purposes only.

Disclaimer: Please note this floor plan is for marketing purposes and is to be used as a guide only. All dimensions are estimates only and may not be exact measurements.