



SOLD

MODERN APARTMENT WITH LOW BODY CORP FEES!

SUPER BUYING!!!

This rear facing apartment is located on level 2 with lift access. Great Buying as owner occupier or Investment!

Here is an awesome opportunity to purchase an apartment in one of the Darwin's most desirable locations, Rapid Creek.

Features:

- * 2 secure car-parks, electronic gates and intercom access
- * Lift Access
- * Modern, open plan design
- * Stunning kitchen with loads of cupboards and bench spaces
- * Bedrooms/bathrooms are located at each side of the apartment giving you privacy to each
- * Bedrooms are well appointed with mirror front built in robes
- * Two bathrooms with ensuite to the main bedroom
- * Private tiled balcony
- * Fully tiled and air-conditioned throughout
- * Internal laundry that is separate from the bathroom
- * Small complex of only 10 units
- * Secure parking with remote access gate
- * Quality fixtures and finishes through-out

The apartment is only one street back from Rapid Creek foreshore, the public swimming pool, walking paths and the local shopping centre and schools.

This is the apartment to purchase as of the wonderful features and the location!

Additional feature/s - Built-In Wardrobes

DCC Rates : Approx. \$ 1,400 per annum

Elite Body Corporate - approx \$ 1200.00 per qtr

2 BED | 2 BATH | 2 CAR

PRICE:

\$414,000

OPEN FOR INSPECTION:

N/A

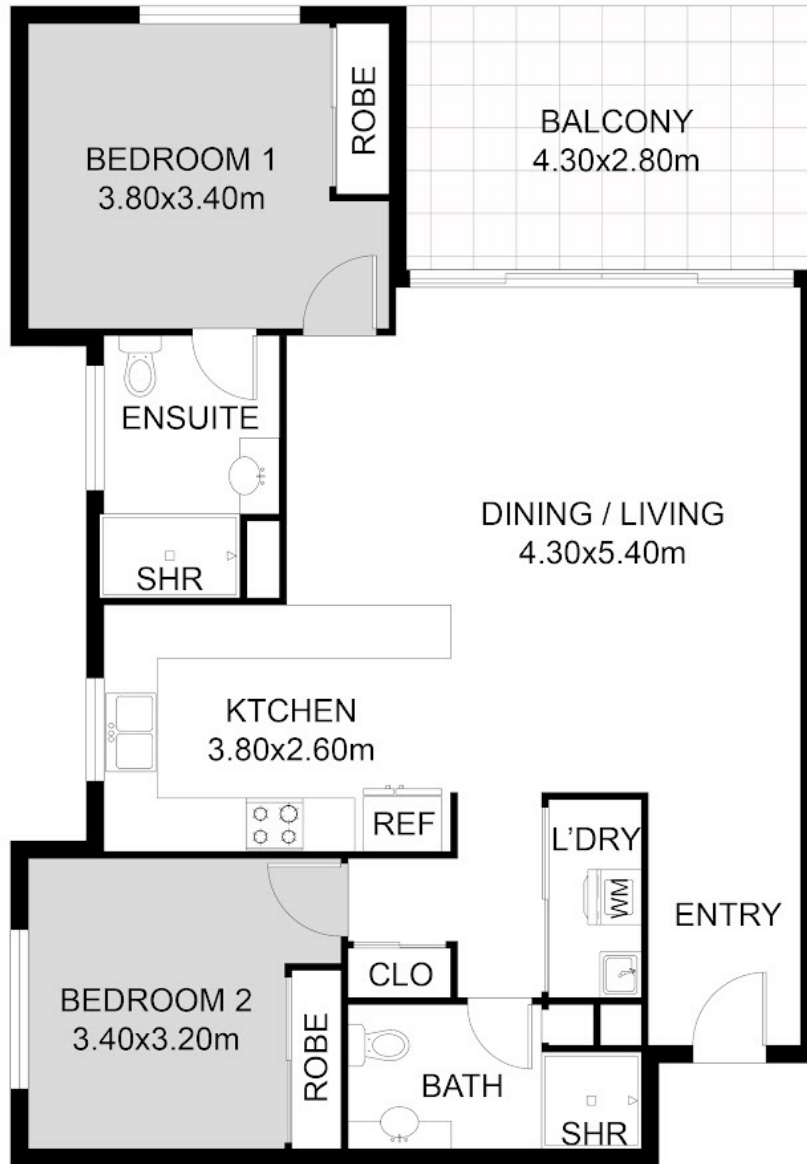


Nicole Wheeler

0417508800

nicolewheeler@atrealty.com.au

www.atrealty.com.au



FLOOR PLAN

Disclaimer: Please note this floor plan is for marketing purposes and is to be used as a guide only. All dimensions are estimates only and may not be exact measurements.

This floor plan including furniture, fixture measurements and dimensions are approximate and for illustrative purposes only.
@Realty gives no guarantee, warranty or representation as to the accuracy and layout.
All enquiries must be directed to the agent, vendor or party representing this floor plan.